

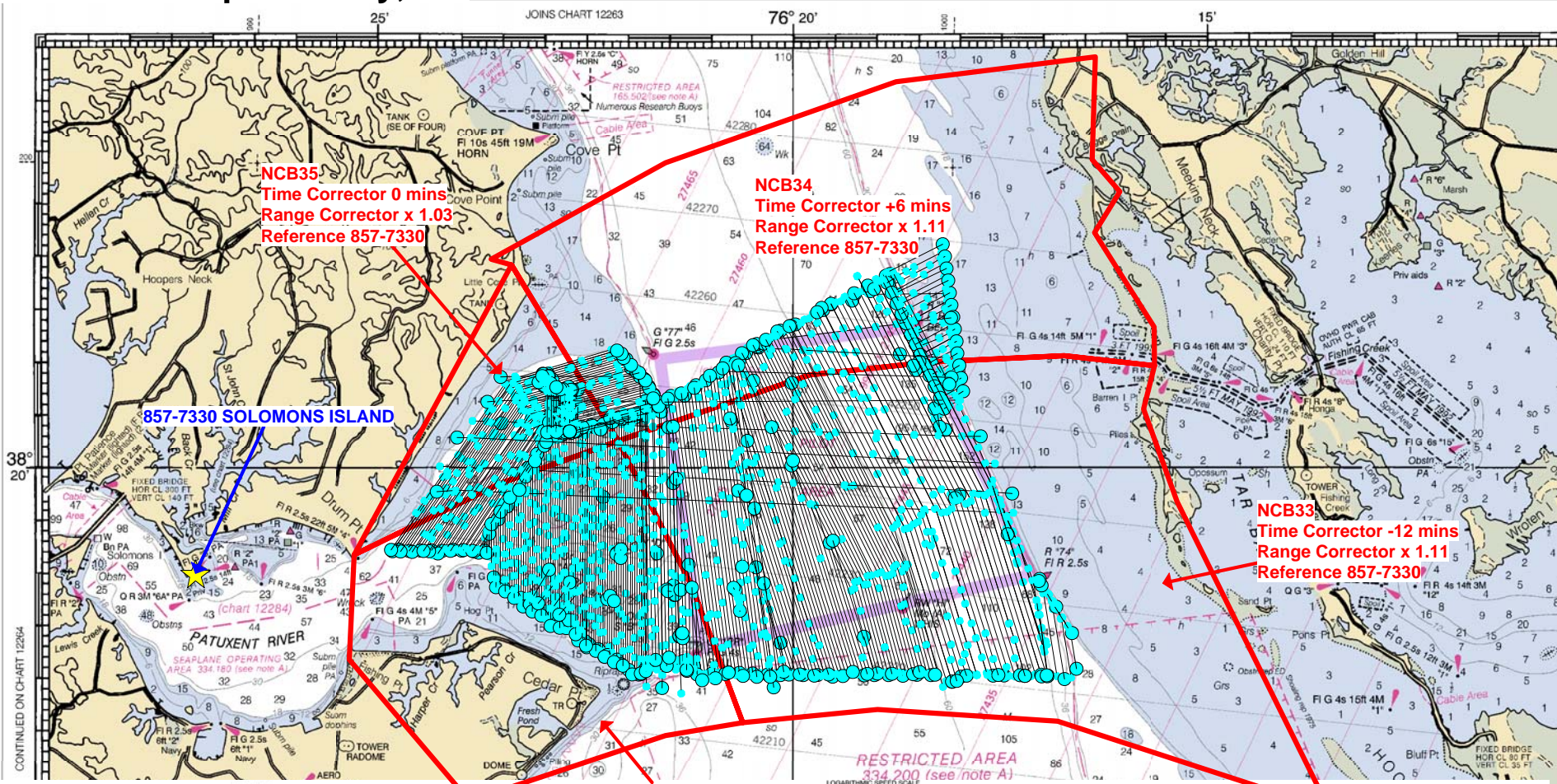
# Final Tidal Zoning

## for OPR-E349-BH-2005, H11450

### Central Chesapeake Bay, MD

This nautical chart has been designed to promote safe navigation. The National Ocean Service encourages users to submit corrections, additions, or comments for this chart to the Chief, Marine Chart Division (NCS2), National Ocean Service, Silver Spring, Maryland 20910-3262.

12230  
LORAN-C OVERPRINTED



76° 30'

