

Final Tidal Zoning for OPR=J323-TJ-2005

Approaches to Gulfport, MS - Sheet H11513

SOUNDINGS IN FEET

RATES ON THIS CHART
 7980-W 7980-X 7980-Y

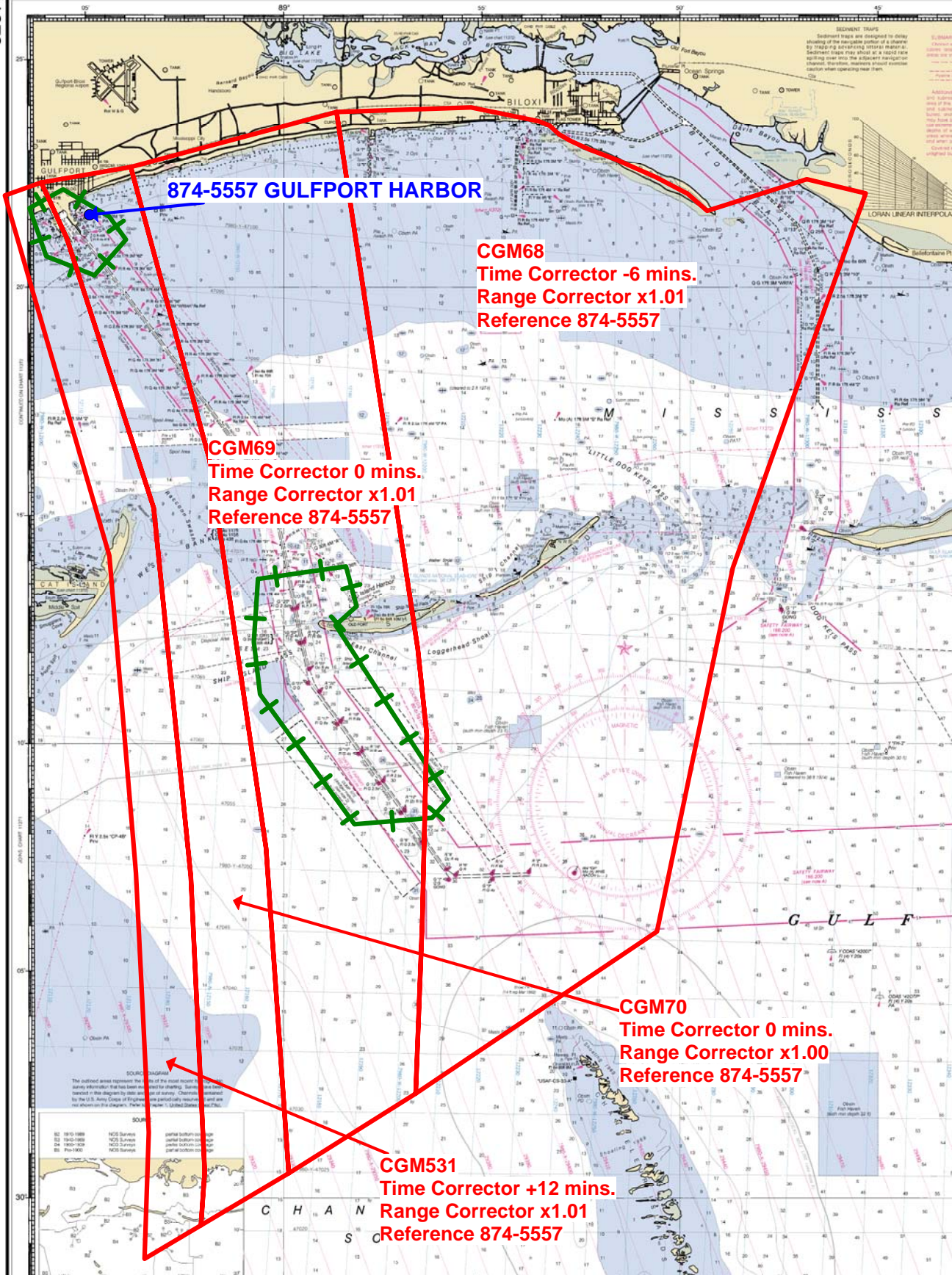
Example: 1985-X
 Loran-C correction tables published by the National Geospatial-Intelligence Agency and others should not be used for this chart. The time of passage should have been obtained on recently determined overhead signal propagation delays. They have not been verified for complete accuracy. Every effort has been made to meet the accuracy standards of the International Hydrographic Association. Corrections are calculated not to rely solely on the values in red boxes.

HORIZONTAL DATUM
 The horizontal datum of this chart is North American Datum of 1983 (NAD 83), which for charting purposes is considered equivalent to the North American Datum of 1983 (NAD 83). Geographic positions referred to the North American Datum of 1983 may be converted to WGS 84 by adding 0.811 meters and 0.100 meters to north and easting values, respectively.

VERTICAL DATUM
 The vertical datum of this chart is Mean High Water (MHW), which is the average of all high water observations. It is not available for the entire vertical datum.

LOTRAN-C OVERPRINTED

11373
 LOTRAN-C OVERPRINTED



SOUNDINGS

The outlined areas represent the soundings for which the Loran-C correction tables have been prepared. Corrections are not available for the entire vertical datum.

NO. 1910-1988	NCS Soundings	partial bottom to high water
NO. 1910-1988	NCS Soundings	partial bottom to mean low water
NO. 1910-1988	NCS Soundings	partial bottom to low water
NO. 1910-1988	NCS Soundings	partial bottom to very low water

C H A N
 S C