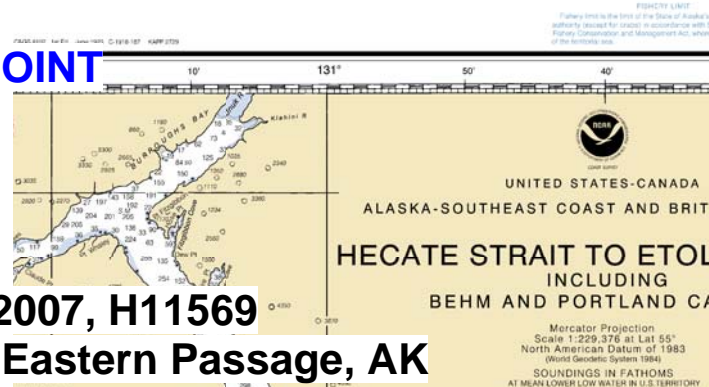


**SA117A**  
**Time Corrector 0 mins.**  
**Range Corrector x1.01**  
**Reference 945-0970**

**SA117**  
**Time Corrector 0 mins.**  
**Range Corrector x1.00**  
**Reference 945-0970**

**945-0970 THOMS POINT**

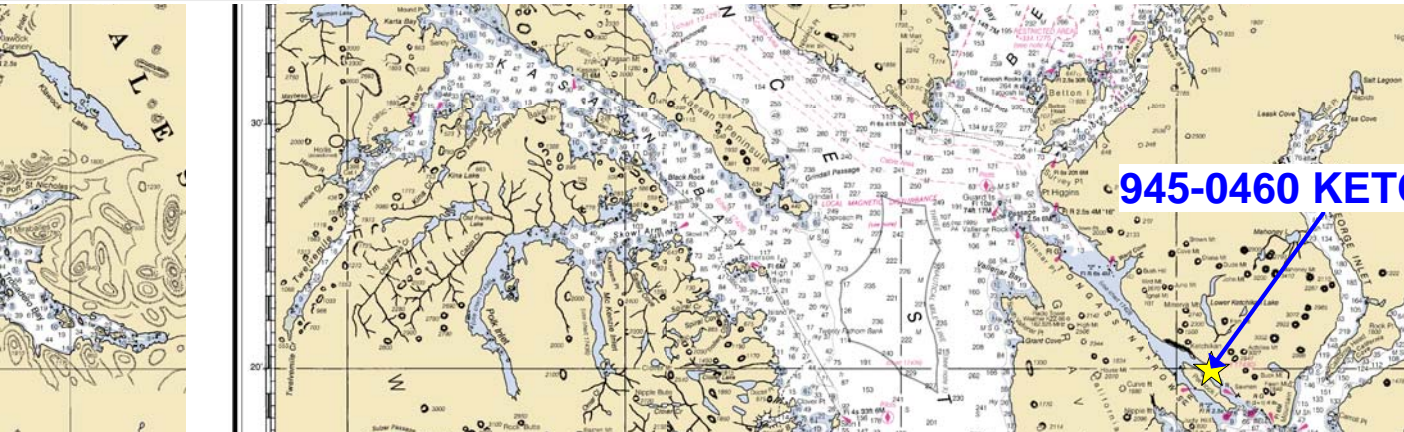
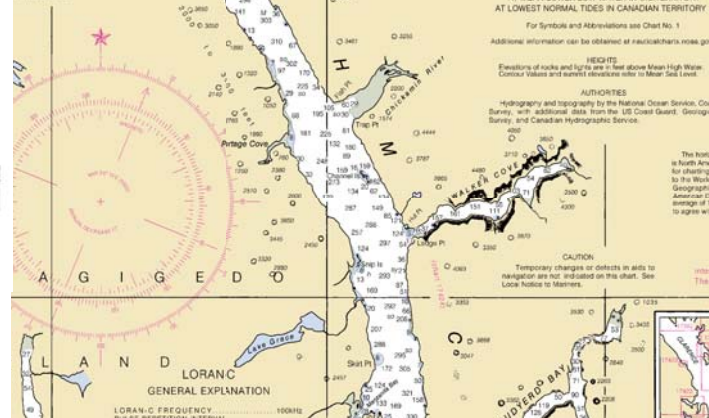
**Final Tidal Zoning**  
**for OPR-O119-FA-2007, H11569**  
**Ernest Sound and Eastern Passage, AK**



Published at Washington, D.C.  
 U.S. DEPARTMENT OF COMMERCE  
 NATIONAL OCEANIC AND ATMOSPHERIC ADMINISTRATION  
 NATIONAL COAST AND GEODETIC SERVICE  
 COAST SURVEY

Electronic Navigation Certificate of Authenticity  
 This electronic chart was produced under the authority of the National Oceanic and Atmospheric Administration (NOAA). NOAA is the national hydrographic office for the United States of America. The digital data provided by NOAA from which this electronic chart was produced has been certified by NOAA for navigation. "NOAA" and the NOAA emblem are registered trademarks of the National Oceanic and Atmospheric Administration. "Maptech" and the Maptech emblem are registered trademarks of Maptech, Inc.

NOAA MAPTECH  
 © Copyright 1999 Maptech, Inc.  
 All rights reserved.



**945-0460 KETCHIKAN**

