

NORTH RANGE
(EAST TRANSIT STATION)

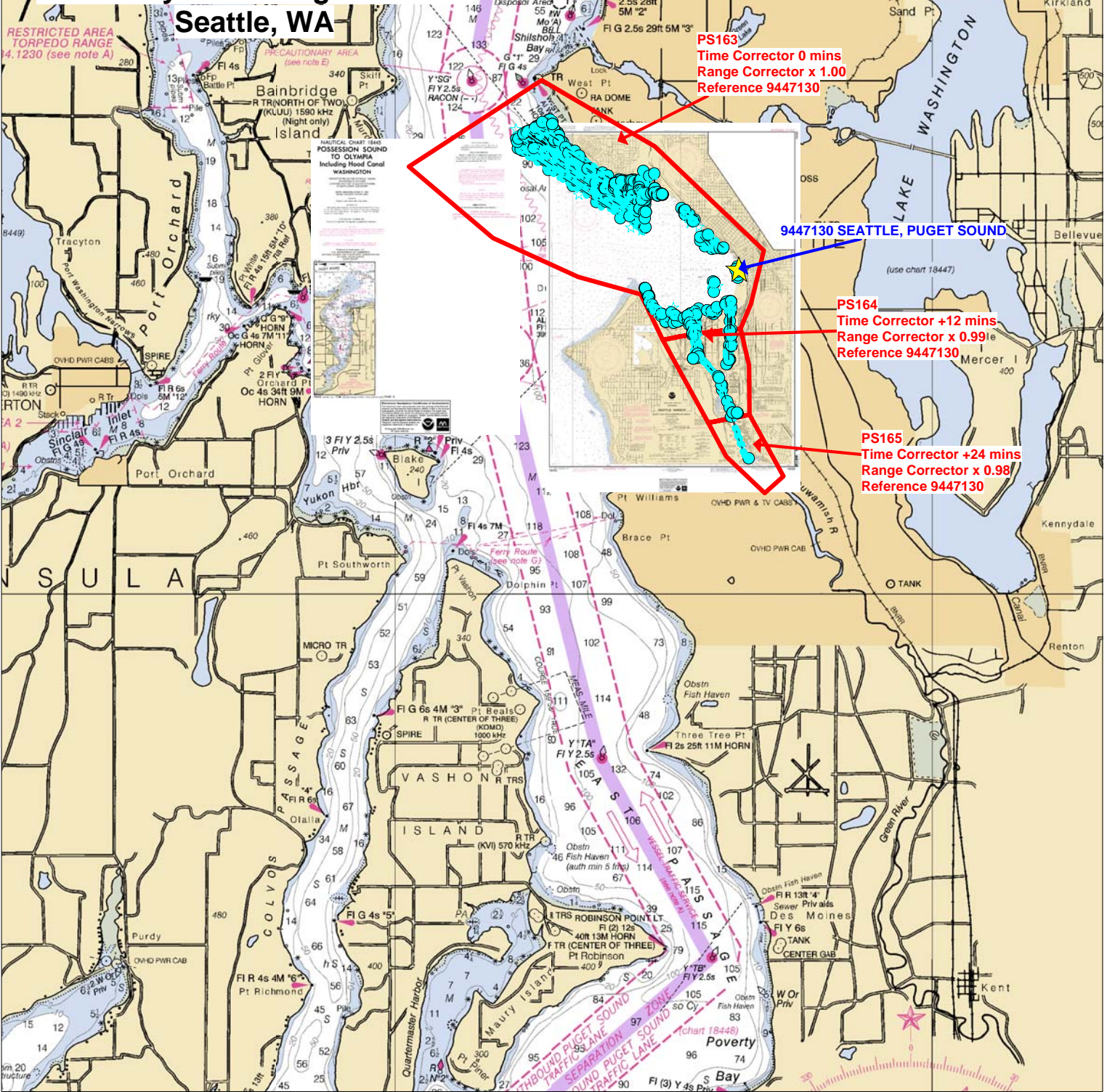
Consult U.S. Coast Guard Light List for supplemental information concerning aid to navigation

NOTE G
Mariners are cautioned that the Washington State Ferries may deviate from the published standard routes due to inclement weather, traffic conditions, navigational hazards or other emergency conditions.

RESTRICTED AREA
TORPEDO RANGE
165.1302
(see note A)

Final Tidal Zoning for S-N912-NRT3-2006, H11605 Elliott Bay Off of Magnolia Bluff Seattle, WA

RESTRICTED AREA
TORPEDO RANGE
14.1230 (see note A)



PS163
Time Corrector 0 mins
Range Corrector x 1.00
Reference 9447130

9447130 SEATTLE, PUGET SOUND

PS164
Time Corrector +12 mins
Range Corrector x 0.99
Reference 9447130

PS165
Time Corrector +24 mins
Range Corrector x 0.98
Reference 9447130

SULLA

COLVOS

PURDY

QUARTERMASTER HARBOR

VASHON ISLAND

MAURY ISLAND

POVERTY BAY

LAKE WASHINGTON

USE CHART 18447

OVHD PWR & TV CABS

OVHD PWR CAB

OVHD PWR CAB

OVHD PWR CAB

OVHD PWR CAB

OVHD PWR CAB

OVHD PWR CAB

OVHD PWR CAB

OVHD PWR CAB

OVHD PWR CAB

OVHD PWR CAB

OVHD PWR CAB

OVHD PWR CAB

Final tide zone node point locations for S-N912-NRT3-2006, H11605

Format: Tide Station (in recommended order of use)
 Average Time Correction (in minutes)
 Range Correction
 Longitude in decimal degrees (negative value denotes Longitude West),
 Latitude in decimal degrees

	Tide Station Order	AVG Time Correction	Range Correction
Zone PS163	9447130	0	1.00
-122.43138 47.661495			
-122.493204 47.634317			
-122.454132 47.611852			
-122.414475 47.59963			
-122.385315 47.594109			
-122.375054 47.579733			
-122.367429 47.5808			
-122.355342 47.582049			
-122.346968 47.582703			
-122.338891 47.583299			
-122.333988 47.591203			
-122.328061 47.607913			
-122.378777 47.640654			
-122.43138 47.661495			
Zone PS164	9447130	+12	0.99
-122.375054 47.579733			
-122.353937 47.553643			
-122.3347 47.556213			
-122.334939 47.571738			
-122.338891 47.583299			
-122.346968 47.582703			
-122.355342 47.582049			
-122.367429 47.5808			
-122.375054 47.579733			
Zone PS165	9447130	+24	0.98
-122.3347 47.556213			
-122.353937 47.553643			
-122.345612 47.543072			
-122.327622 47.531509			
-122.318915 47.536796			
-122.3347 47.556213			