

Final Tidal Zoning for OPR-P158-FA-2006, H11608 Orca Bay, AK (Preliminary As Final)

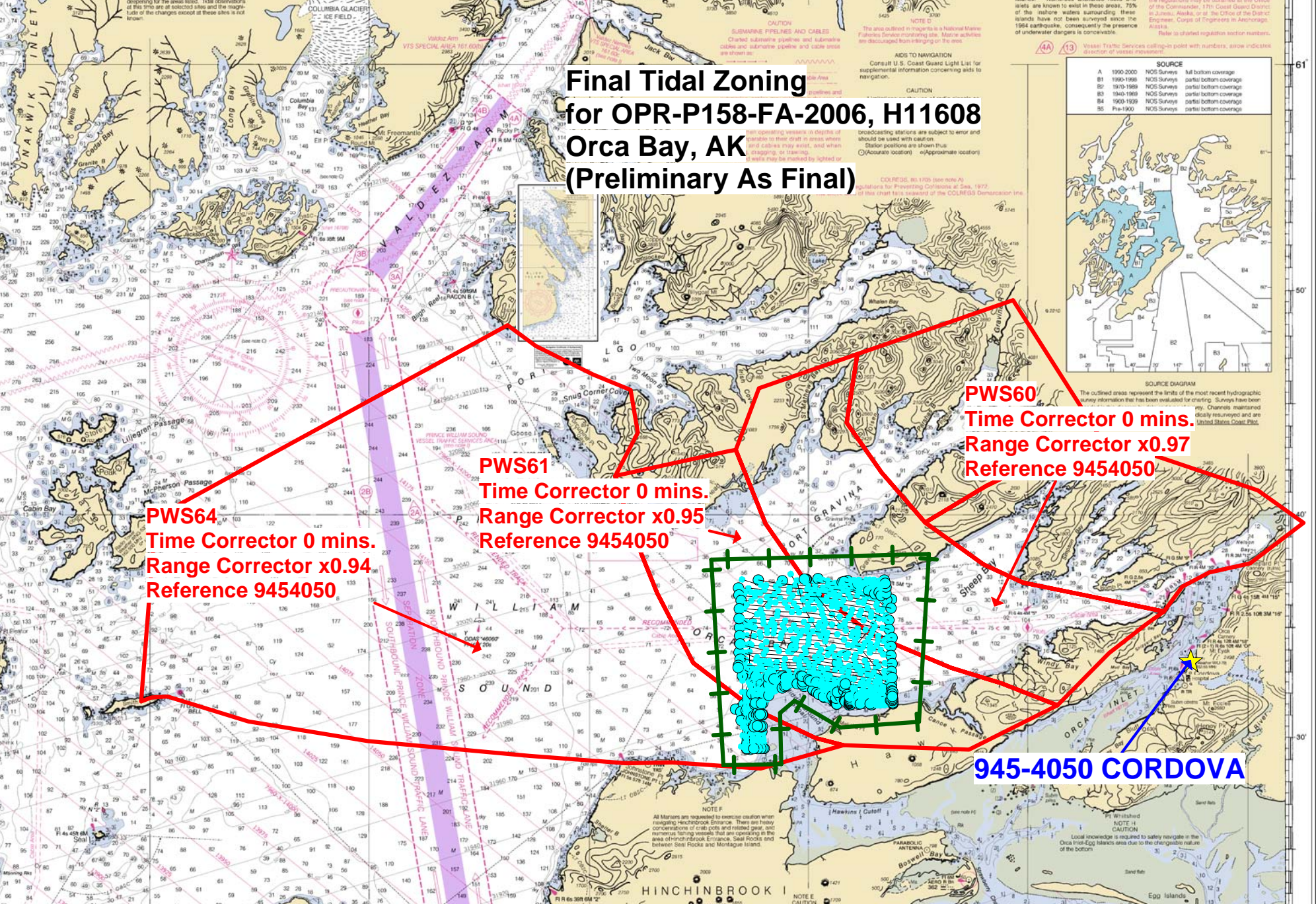
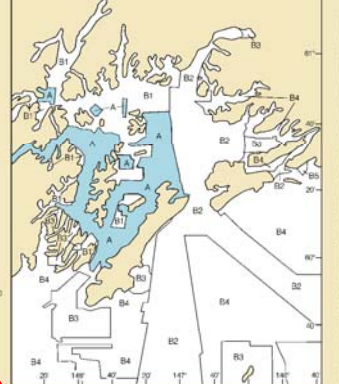
PWS64
Time Corrector 0 mins.
Range Corrector x0.94
Reference 9454050

PWS61
Time Corrector 0 mins.
Range Corrector x0.95
Reference 9454050

PWS60
Time Corrector 0 mins.
Range Corrector x0.97
Reference 9454050

945-4050 CORDOVA

SOURCE	
A	1990-2000 NOS Surveys full bottom coverage
B1	1990-1999 NOS Surveys partial bottom coverage
B2	1970-1989 NOS Surveys partial bottom coverage
B3	1940-1969 NOS Surveys partial bottom coverage
B4	1900-1939 NOS Surveys partial bottom coverage
B5	Pre-1900 NOS Surveys partial bottom coverage



CAUTION
SUBMERGED PIPES AND CABLES
Charted submarine pipelines and submarine cables and submarine pipeline and cable areas are shown as follows:
Submarine Pipeline and Cable Area
Submarine Pipeline and Cable Area

CAUTION
The area outlined in magenta is a National Marine Fisheries Service monitoring site. Marine activities are discouraged from entering the area.

CAUTION
Broadcasting stations are subject to error and should be used with caution.
Stake positions are shown thus:
O (Accurate location) o (Approximate location)

CAUTION
The area outlined in magenta is a National Marine Fisheries Service monitoring site. Marine activities are discouraged from entering the area.

CAUTION
The area outlined in magenta is a National Marine Fisheries Service monitoring site. Marine activities are discouraged from entering the area.

CAUTION
The area outlined in magenta is a National Marine Fisheries Service monitoring site. Marine activities are discouraged from entering the area.

CAUTION
The area outlined in magenta is a National Marine Fisheries Service monitoring site. Marine activities are discouraged from entering the area.

CAUTION
The area outlined in magenta is a National Marine Fisheries Service monitoring site. Marine activities are discouraged from entering the area.

CAUTION
The area outlined in magenta is a National Marine Fisheries Service monitoring site. Marine activities are discouraged from entering the area.

CAUTION
The area outlined in magenta is a National Marine Fisheries Service monitoring site. Marine activities are discouraged from entering the area.

CAUTION
The area outlined in magenta is a National Marine Fisheries Service monitoring site. Marine activities are discouraged from entering the area.

CAUTION
The area outlined in magenta is a National Marine Fisheries Service monitoring site. Marine activities are discouraged from entering the area.

CAUTION
The area outlined in magenta is a National Marine Fisheries Service monitoring site. Marine activities are discouraged from entering the area.

CAUTION
The area outlined in magenta is a National Marine Fisheries Service monitoring site. Marine activities are discouraged from entering the area.

CAUTION
The area outlined in magenta is a National Marine Fisheries Service monitoring site. Marine activities are discouraged from entering the area.

CAUTION
The area outlined in magenta is a National Marine Fisheries Service monitoring site. Marine activities are discouraged from entering the area.

CAUTION
The area outlined in magenta is a National Marine Fisheries Service monitoring site. Marine activities are discouraged from entering the area.

CAUTION
The area outlined in magenta is a National Marine Fisheries Service monitoring site. Marine activities are discouraged from entering the area.

CAUTION
The area outlined in magenta is a National Marine Fisheries Service monitoring site. Marine activities are discouraged from entering the area.

CAUTION
The area outlined in magenta is a National Marine Fisheries Service monitoring site. Marine activities are discouraged from entering the area.

NOTE
The area outlined in magenta is a National Marine Fisheries Service monitoring site. Marine activities are discouraged from entering the area.

NOTE
The area outlined in magenta is a National Marine Fisheries Service monitoring site. Marine activities are discouraged from entering the area.

NOTE
The area outlined in magenta is a National Marine Fisheries Service monitoring site. Marine activities are discouraged from entering the area.

NOTE
The area outlined in magenta is a National Marine Fisheries Service monitoring site. Marine activities are discouraged from entering the area.

NOTE
The area outlined in magenta is a National Marine Fisheries Service monitoring site. Marine activities are discouraged from entering the area.

NOTE
The area outlined in magenta is a National Marine Fisheries Service monitoring site. Marine activities are discouraged from entering the area.

NOTE
The area outlined in magenta is a National Marine Fisheries Service monitoring site. Marine activities are discouraged from entering the area.

NOTE
The area outlined in magenta is a National Marine Fisheries Service monitoring site. Marine activities are discouraged from entering the area.

NOTE
The area outlined in magenta is a National Marine Fisheries Service monitoring site. Marine activities are discouraged from entering the area.

NOTE
The area outlined in magenta is a National Marine Fisheries Service monitoring site. Marine activities are discouraged from entering the area.

NOTE
The area outlined in magenta is a National Marine Fisheries Service monitoring site. Marine activities are discouraged from entering the area.

NOTE
The area outlined in magenta is a National Marine Fisheries Service monitoring site. Marine activities are discouraged from entering the area.

NOTE
The area outlined in magenta is a National Marine Fisheries Service monitoring site. Marine activities are discouraged from entering the area.

NOTE
The area outlined in magenta is a National Marine Fisheries Service monitoring site. Marine activities are discouraged from entering the area.

NOTE
The area outlined in magenta is a National Marine Fisheries Service monitoring site. Marine activities are discouraged from entering the area.

NOTE
The area outlined in magenta is a National Marine Fisheries Service monitoring site. Marine activities are discouraged from entering the area.

NOTE
The area outlined in magenta is a National Marine Fisheries Service monitoring site. Marine activities are discouraged from entering the area.

NOTE
The area outlined in magenta is a National Marine Fisheries Service monitoring site. Marine activities are discouraged from entering the area.

NOTE
The area outlined in magenta is a National Marine Fisheries Service monitoring site. Marine activities are discouraged from entering the area.

NOTE
The area outlined in magenta is a National Marine Fisheries Service monitoring site. Marine activities are discouraged from entering the area.

NOTE
All Mariners are requested to exercise caution when navigating Hochbrock Entrance. There are many concentrations of cable cuts and related gear, and numerous fishing vessels that are operating in the area between Hochbrock Entrance, Seal Rocks and between Seal Rocks and Montague Island.

NOTE
Local knowledge is required to safely navigate in the Orca Inlet-Egg Islands area due to the changeable nature of the bottom.