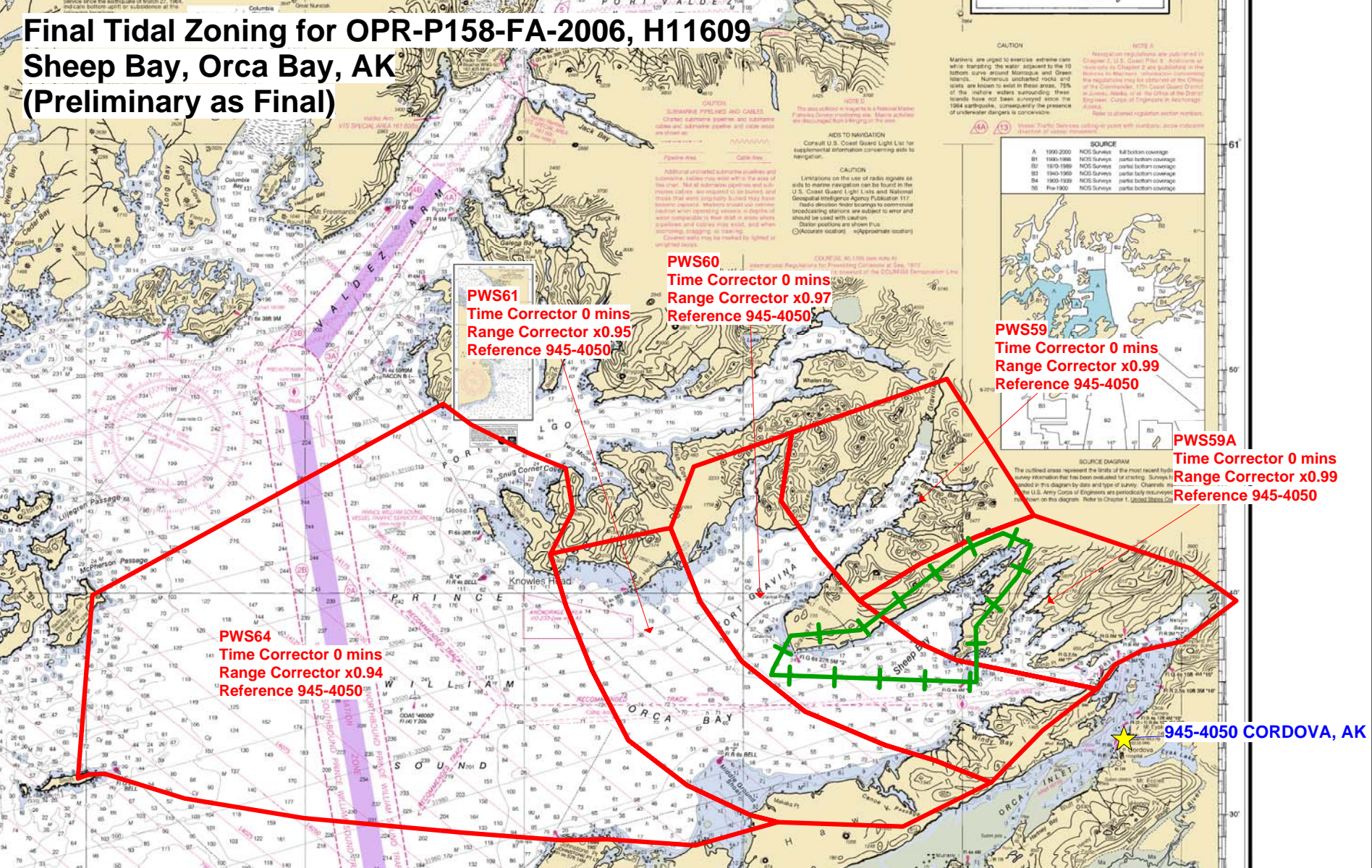


Final Tidal Zoning for OPR-P158-FA-2006, H11609

Sheep Bay, Orca Bay, AK

(Preliminary as Final)



PWS61
 Time Corrector 0 mins
 Range Corrector x0.95
 Reference 945-4050

PWS60
 Time Corrector 0 mins
 Range Corrector x0.97
 Reference 945-4050

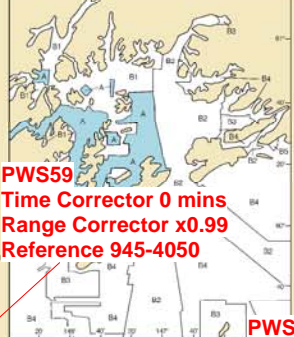
PWS59
 Time Corrector 0 mins
 Range Corrector x0.99
 Reference 945-4050

PWS59A
 Time Corrector 0 mins
 Range Corrector x0.99
 Reference 945-4050

PWS64
 Time Corrector 0 mins
 Range Corrector x0.94
 Reference 945-4050

945-4050 CORDOVA, AK

SOURCE		
A	1900-2000	NOS Surveys
B1	1950-1960	NOS Surveys
B2	1910-1960	NOS Surveys
B3	1940-1960	NOS Surveys
B4	1960-1950	NOS Surveys
B5	Pre-1900	NOS Surveys



SOURCE DIAGRAM
 The outlined areas represent the limits of the most recent hydrographic information that has been included for printing. Surveys included in this diagram by date and type of survey. Charts included in this diagram by date and type of survey. Charts included in this diagram by date and type of survey. Charts included in this diagram by date and type of survey.

CAUTION
 Mariners are urged to exercise extreme care while navigating the water adjacent to the 10 bottom curve around Montezuma and Green Islands. Numerous uncharted rocks and reefs are known to exist in these areas. 75% of the shallow waters surrounding these islands have not been surveyed since the 1994 earthquake, consequently the presence of underwater changes is conceivable.

NOTES
 The area outlined in yellow is a National Marine Sanctuaries area. All activities are prohibited from entering the area.

CAUTION
 Consult U.S. Coast Guard Light List for supplemental information concerning aids to navigation.

CAUTION
 Limitations on the use of radio signals as aids to marine navigation can be found in the U.S. Coast Guard Light List and National Geospatial Intelligence Agency Publication 117.

CAUTION
 Radio direction finder bearings to commercial broadcasting stations are subject to error and should be used with caution.

CAUTION
 Distress positions are shown thus:
 (A) Accurate location (B) Approximate location

CAUTION
 International Regulations for Preventing Collisions at Sea, 1972

CAUTION
 International Regulations for Preventing Collisions at Sea, 1972

CAUTION
 International Regulations for Preventing Collisions at Sea, 1972

CAUTION
 International Regulations for Preventing Collisions at Sea, 1972

CAUTION
 International Regulations for Preventing Collisions at Sea, 1972

CAUTION
 International Regulations for Preventing Collisions at Sea, 1972

CAUTION
 International Regulations for Preventing Collisions at Sea, 1972

CAUTION
 International Regulations for Preventing Collisions at Sea, 1972

CAUTION
 International Regulations for Preventing Collisions at Sea, 1972

CAUTION
 International Regulations for Preventing Collisions at Sea, 1972

CAUTION
 International Regulations for Preventing Collisions at Sea, 1972

CAUTION
 International Regulations for Preventing Collisions at Sea, 1972

CAUTION
 International Regulations for Preventing Collisions at Sea, 1972

CAUTION
 International Regulations for Preventing Collisions at Sea, 1972

CAUTION
 International Regulations for Preventing Collisions at Sea, 1972

CAUTION
 International Regulations for Preventing Collisions at Sea, 1972

CAUTION
 International Regulations for Preventing Collisions at Sea, 1972