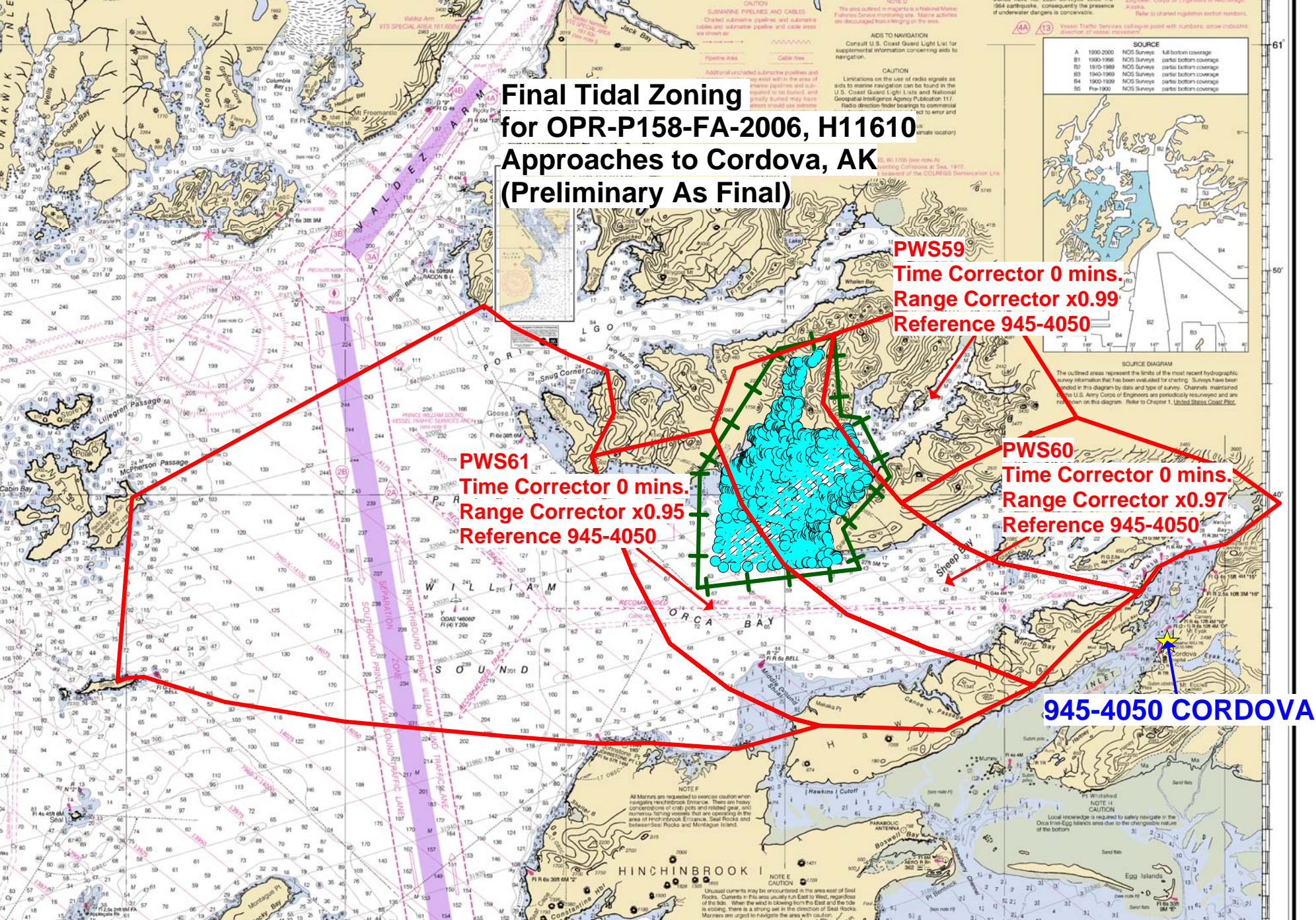


Final Tidal Zoning for OPR-P158-FA-2006, H11610 Approaches to Cordova, AK (Preliminary As Final)



PWS59
Time Corrector 0 mins.
Range Corrector x0.99
Reference 945-4050

PWS61
Time Corrector 0 mins.
Range Corrector x0.95
Reference 945-4050

PWS60
Time Corrector 0 mins.
Range Corrector x0.97
Reference 945-4050

945-4050 CORDOVA

SOURCE	
A	1990-2000 NOS Surveys
B	1990-1998 NOS Surveys
BP	1970-1989 NOS Surveys
B3	1960-1989 NOS Surveys
B4	1900-1999 NOS Surveys
B5	Pre-1900 NOS Surveys



The outlined areas represent the limits of the most recent hydrographic survey information that has been evaluated for charting. Surveys have been conducted in this diagram by date and type of survey. Channels mentioned on the U.S. Army Corps of Engineers are periodically re-surveyed and are not shown on this diagram. Refer to Chapter 1, United States Coast Pilot.

CAUTION
Limitations on the use of radio signals as aids to marine navigation can be found in the U.S. Coast Guard Light Lists and National Geospatial Intelligence Agency Publication 117. Radio direction finder bearings to commercial radio beacons should be corrected to true (true location).

CAUTION
The area outlined in orange is a National Marine Fisheries Service monitoring site. Marine activities such as discharging from dredging on the site.

CAUTION
Additional uncharted submarine pipelines and cables may exist within the area of marine pipelines and cables and generally buried may have areas that are not shown as cables.

CAUTION
Unusual currents may be encountered in the area east of Seal Rocks. Currents in this area usually run East to West, regardless of the tide. When the wind is blowing from the East and the tide is ebbing, there is a strong set in the direction of Seal Rocks. Mariners are urged to navigate the area with caution.

NOTE
All Mariners are requested to exercise caution when navigating through Orca Bay. There are heavy concentrations of crab pots and related gear, and numerous fishing vessels that are operating in the area of Hinchinbrook Entrance, Seal Rocks and between Seal Rocks and Montague Pt.

NOTE
Local knowledge is required to safely navigate in the Orca Inlet Egg Islands area due to the irregular nature of the bottom.

NOTE
Unusual currents may be encountered in the area east of Seal Rocks. Currents in this area usually run East to West, regardless of the tide. When the wind is blowing from the East and the tide is ebbing, there is a strong set in the direction of Seal Rocks. Mariners are urged to navigate the area with caution.

NOTE
Unusual currents may be encountered in the area east of Seal Rocks. Currents in this area usually run East to West, regardless of the tide. When the wind is blowing from the East and the tide is ebbing, there is a strong set in the direction of Seal Rocks. Mariners are urged to navigate the area with caution.

NOTE
Unusual currents may be encountered in the area east of Seal Rocks. Currents in this area usually run East to West, regardless of the tide. When the wind is blowing from the East and the tide is ebbing, there is a strong set in the direction of Seal Rocks. Mariners are urged to navigate the area with caution.

NOTE
Unusual currents may be encountered in the area east of Seal Rocks. Currents in this area usually run East to West, regardless of the tide. When the wind is blowing from the East and the tide is ebbing, there is a strong set in the direction of Seal Rocks. Mariners are urged to navigate the area with caution.

NOTE
Unusual currents may be encountered in the area east of Seal Rocks. Currents in this area usually run East to West, regardless of the tide. When the wind is blowing from the East and the tide is ebbing, there is a strong set in the direction of Seal Rocks. Mariners are urged to navigate the area with caution.

NOTE
Unusual currents may be encountered in the area east of Seal Rocks. Currents in this area usually run East to West, regardless of the tide. When the wind is blowing from the East and the tide is ebbing, there is a strong set in the direction of Seal Rocks. Mariners are urged to navigate the area with caution.

NOTE
Unusual currents may be encountered in the area east of Seal Rocks. Currents in this area usually run East to West, regardless of the tide. When the wind is blowing from the East and the tide is ebbing, there is a strong set in the direction of Seal Rocks. Mariners are urged to navigate the area with caution.

NOTE
Unusual currents may be encountered in the area east of Seal Rocks. Currents in this area usually run East to West, regardless of the tide. When the wind is blowing from the East and the tide is ebbing, there is a strong set in the direction of Seal Rocks. Mariners are urged to navigate the area with caution.

NOTE
Unusual currents may be encountered in the area east of Seal Rocks. Currents in this area usually run East to West, regardless of the tide. When the wind is blowing from the East and the tide is ebbing, there is a strong set in the direction of Seal Rocks. Mariners are urged to navigate the area with caution.

NOTE
Unusual currents may be encountered in the area east of Seal Rocks. Currents in this area usually run East to West, regardless of the tide. When the wind is blowing from the East and the tide is ebbing, there is a strong set in the direction of Seal Rocks. Mariners are urged to navigate the area with caution.

NOTE
Unusual currents may be encountered in the area east of Seal Rocks. Currents in this area usually run East to West, regardless of the tide. When the wind is blowing from the East and the tide is ebbing, there is a strong set in the direction of Seal Rocks. Mariners are urged to navigate the area with caution.

NOTE
Unusual currents may be encountered in the area east of Seal Rocks. Currents in this area usually run East to West, regardless of the tide. When the wind is blowing from the East and the tide is ebbing, there is a strong set in the direction of Seal Rocks. Mariners are urged to navigate the area with caution.

NOTE
Unusual currents may be encountered in the area east of Seal Rocks. Currents in this area usually run East to West, regardless of the tide. When the wind is blowing from the East and the tide is ebbing, there is a strong set in the direction of Seal Rocks. Mariners are urged to navigate the area with caution.

NOTE
Unusual currents may be encountered in the area east of Seal Rocks. Currents in this area usually run East to West, regardless of the tide. When the wind is blowing from the East and the tide is ebbing, there is a strong set in the direction of Seal Rocks. Mariners are urged to navigate the area with caution.

NOTE
Unusual currents may be encountered in the area east of Seal Rocks. Currents in this area usually run East to West, regardless of the tide. When the wind is blowing from the East and the tide is ebbing, there is a strong set in the direction of Seal Rocks. Mariners are urged to navigate the area with caution.

NOTE
Unusual currents may be encountered in the area east of Seal Rocks. Currents in this area usually run East to West, regardless of the tide. When the wind is blowing from the East and the tide is ebbing, there is a strong set in the direction of Seal Rocks. Mariners are urged to navigate the area with caution.

NOTE
Unusual currents may be encountered in the area east of Seal Rocks. Currents in this area usually run East to West, regardless of the tide. When the wind is blowing from the East and the tide is ebbing, there is a strong set in the direction of Seal Rocks. Mariners are urged to navigate the area with caution.

NOTE
Unusual currents may be encountered in the area east of Seal Rocks. Currents in this area usually run East to West, regardless of the tide. When the wind is blowing from the East and the tide is ebbing, there is a strong set in the direction of Seal Rocks. Mariners are urged to navigate the area with caution.

NOTE
Unusual currents may be encountered in the area east of Seal Rocks. Currents in this area usually run East to West, regardless of the tide. When the wind is blowing from the East and the tide is ebbing, there is a strong set in the direction of Seal Rocks. Mariners are urged to navigate the area with caution.

NOTE
Unusual currents may be encountered in the area east of Seal Rocks. Currents in this area usually run East to West, regardless of the tide. When the wind is blowing from the East and the tide is ebbing, there is a strong set in the direction of Seal Rocks. Mariners are urged to navigate the area with caution.

NOTE
Unusual currents may be encountered in the area east of Seal Rocks. Currents in this area usually run East to West, regardless of the tide. When the wind is blowing from the East and the tide is ebbing, there is a strong set in the direction of Seal Rocks. Mariners are urged to navigate the area with caution.

NOTE
Unusual currents may be encountered in the area east of Seal Rocks. Currents in this area usually run East to West, regardless of the tide. When the wind is blowing from the East and the tide is ebbing, there is a strong set in the direction of Seal Rocks. Mariners are urged to navigate the area with caution.

NOTE
Unusual currents may be encountered in the area east of Seal Rocks. Currents in this area usually run East to West, regardless of the tide. When the wind is blowing from the East and the tide is ebbing, there is a strong set in the direction of Seal Rocks. Mariners are urged to navigate the area with caution.

NOTE
Unusual currents may be encountered in the area east of Seal Rocks. Currents in this area usually run East to West, regardless of the tide. When the wind is blowing from the East and the tide is ebbing, there is a strong set in the direction of Seal Rocks. Mariners are urged to navigate the area with caution.