

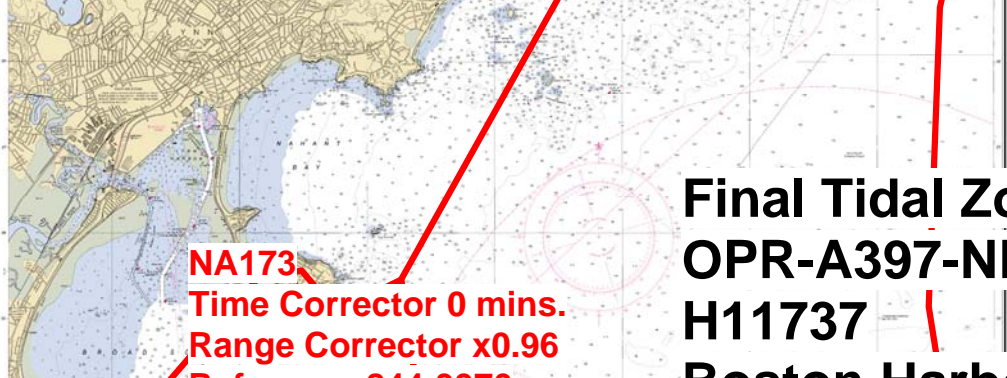
BOSTON NORTH
 The project depths are 1 part and 20 feet in the western depths see chart 13270.

LORAN-C
 GENERAL EXPLANATION

LORAN-C FREQUENCY 100kHz
 PULSE REPETITION INTERVAL
 9940 99.600 Microseconds
 STATION TYPE DESIGNATORS (Not individual station letter designators)
 M Master
 W Secondary
 X Secondary
 Y Secondary
 Z Secondary

STANDBY

Prepared by the National Hydrographic Survey Office, Washington, D.C. Symbols should not be used without permission.

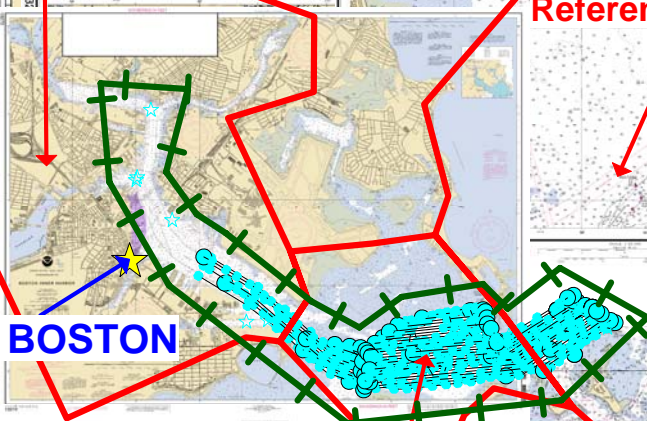


**Final Tidal Zoning for
 OPR-A397-NRT5-2007
 H11737
 Boston Harbor, MA**

BOS4
 Time Corrector 0 mins.
 Range Corrector x1.00
 Reference 844-3970

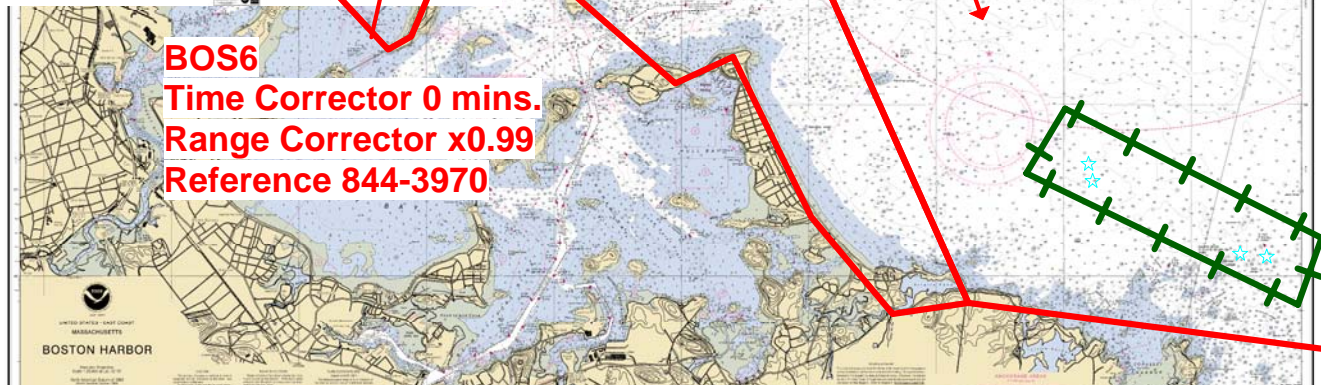
NA173
 Time Corrector 0 mins.
 Range Corrector x0.96
 Reference 844-3970

NA174
 Time Corrector -6 mins.
 Range Corrector x0.94
 Reference 844-3970



844-3970 BOSTON

BOS6
 Time Corrector 0 mins.
 Range Corrector x0.99
 Reference 844-3970



UNITED STATES COAST AND GEODETIC SURVEY
 MASSACHUSETTS
BOSTON HARBOR