

H11882

NOAA FORM 76-35A

U.S. DEPARTMENT OF COMMERCE  
NATIONAL OCEANIC AND ATMOSPHERIC ADMINISTRATION  
NATIONAL OCEAN SERVICE

## DESCRIPTIVE REPORT

*Type of Survey* ..... HYDROGRAPHIC  
*Field No.* ..... M-L906-KR-08  
*Registry No.* ..... H11882

### LOCALITY

*State* ..... CALIFORNIA  
*General Locality* ..... Pacific Ocean - Southern California  
*Sublocality* ..... Vicinity of San Pedro Escarpment

2008

### CHIEF OF PARTY

Dean Moyles, Fugro Pelagros

### LIBRARY & ARCHIVES

DATE .....

## HYDROGRAPHIC TITLE SHEET

H11882

INSTRUCTIONS · The hydrographic sheet should be accompanied by this form,  
filled in as completely as possible, when the sheet is forwarded to the office.

FIELD NO.

State CALIFORNIAGeneral Locality Pacific Ocean - Southern CaliforniaSublocality Vicinity of San Pedro EscarpmentScale N/A Dates of Survey 07/13/2008 - 08/23/2008Instructions Date 7/7/2008 Project No. M-L906-KR-08Vessel R/V QUICKSILVER (947419), F/V PACIFIC STAR (556510)Chief of Party Dean MoylesSurveyed by ORTHMANN, MOYLES, ZURITA, STEWART, FARLEY, MOUNT,  
CAMERON, HAM, ET ALSoundings taken by echo sounders: RESON SEABAT 7125 AND 8111 ECHOSOUNDERS HULL MOUNTEDGraphic record scaled by Fugro Pelagos, Inc. personnelGraphic record checked by Fugro Pelagos, Inc. personnelEvaluation by K. Brown Automated plot by N/AVerification by K. BrownSoundings in Feet at MLLWREMARKS: Time in UTC. UTM Projection Zone 11

Revisions and annotations appearing as endnotes were

generated during office processing.

As a result, page numbering may be interrupted or non-sequential

All separates are filed with the hydrographic data.



## A. AREA SURVEYED

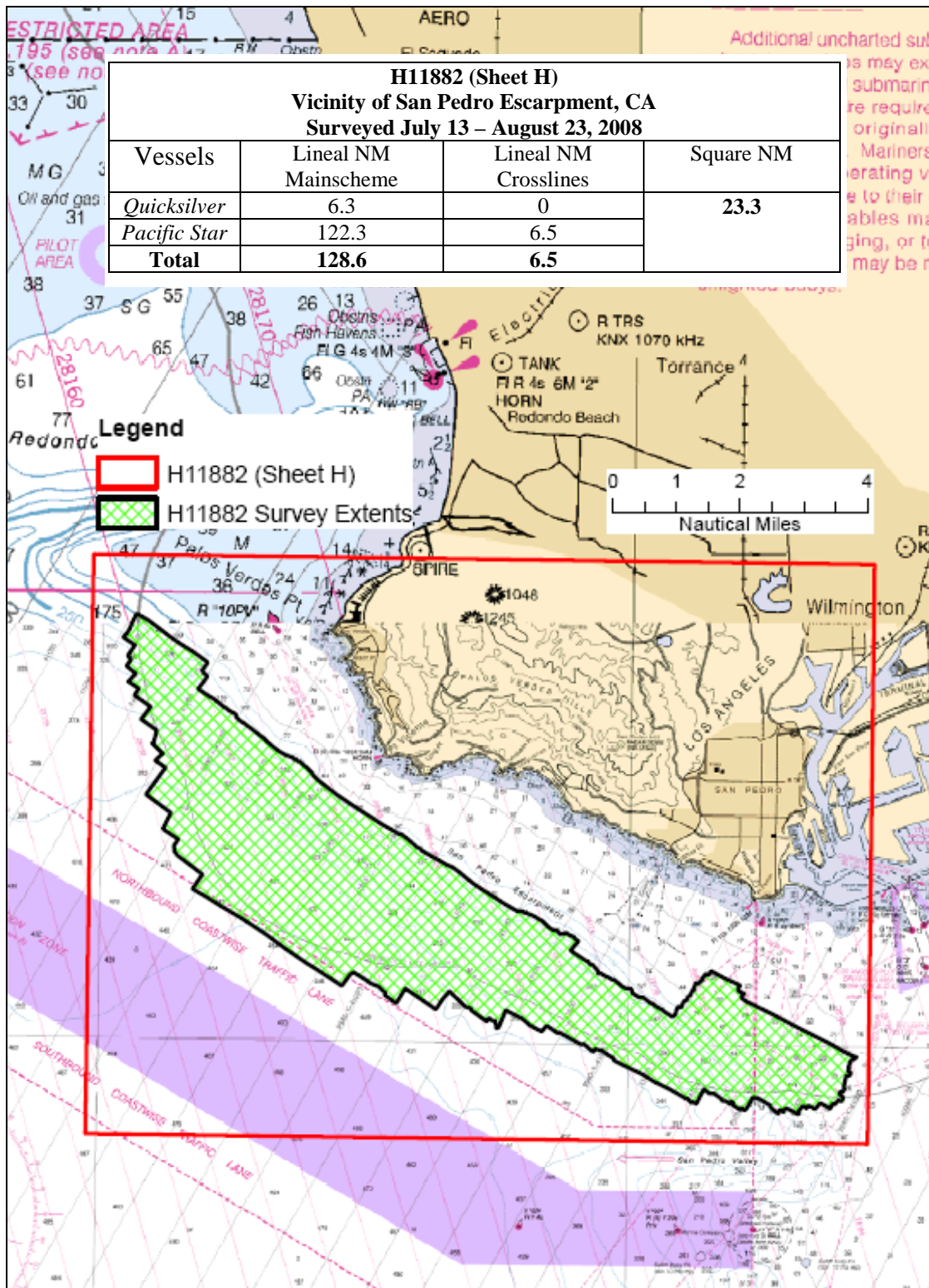
H11882 (Sheet H) is in the vicinity of San Pedro Escarpment, California. It is bound by the coordinates listed in Table 1<sup>1</sup>.

This data was collected by Fugro Pelagos, Inc. for NOAA and the State of California's Coastal Conservancy. While the State of California's interest in this data is primarily for fisheries habitat mapping, the necessary steps to meet NOAA specifications and make the data suitable to OCS for nautical charting purposes have been taken, as detailed in the 2008 Specifications and Deliverables and described in this and accompanying reports.

Hydrographic data collection began on July 13, 2008 and ended on August 23, 2008.

**Table 1 – Sheet Bounds**

<b>Point</b>	<b>Latitude (North)</b>	<b>Longitude (West)</b>
1	33-47-38	118-30-13
2	33-47-38	118-15-28
3	33-38-29	118-15-28
4	33-38-29	118-30-13
5	33-47-38	118-30-13



**Figure 1 H11882 Area Surveyed**

## **B. DATA ACQUISITION AND PROCESSING**

Refer to the M-L906-KR-08 Data Acquisition and Processing Report<sup>2</sup> for a detailed description of all equipment, survey vessels, processing procedures and quality control features. Items specific to this survey and any deviations from the Data Acquisition and Processing Report are discussed in the following sections.

### B.1 Equipment & Vessels

The R/V Quicksilver and F/V Pacific Star acquired all sounding data for H11882.

The Quicksilver, which is 32 feet in length with a draft of 3 feet, was equipped with a Reson Seabat 7125 for multibeam data acquisition. The vessel was also equipped with two AML sound velocity and pressure sensors (SV&P) for sound velocity profiles. Vessel attitude and position were measured using an Applanix Position and Orientation System for Marine Vessel (POSMV 320 V4) with S7K files logged in Winfrog Multibeam v 3.08.23.

The Pacific Star, which is 162 feet in length with a draft of 16 feet, was equipped similarly to the Quicksilver except a Reson Seabat 8111 and a Brooks Ocean Moving Vessel Profiler (MVP) were installed as well.

Refer to M-L906-KR-08 Data Acquisition and Processing Report for a complete listing of equipment and vessel descriptions.

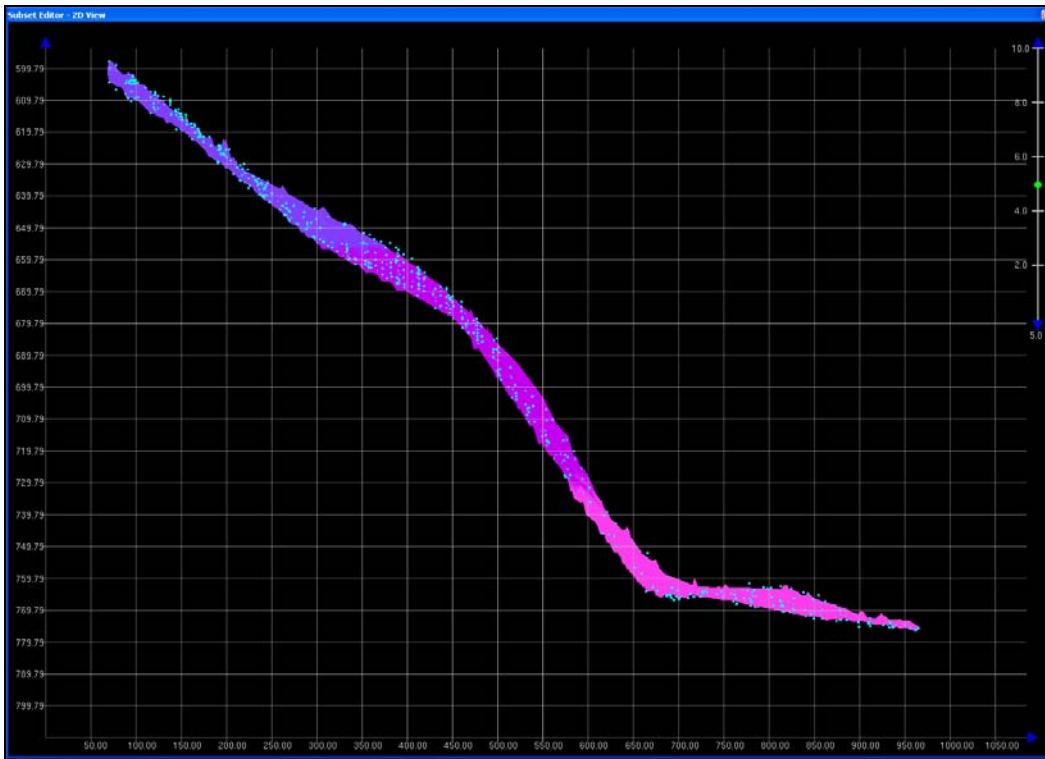
### B.2 Quality Control

#### Crosslines

Quality control crosslines were planned so that most main scheme lines would intersect with at least one crossline, were well distributed geographically, and that total crossline nautical miles ran would total 5 % of the main scheme nautical miles.

Total crossline length surveyed was 6.5 nautical miles or 5.1 percent of the total main scheme nautical miles. All crosslines were compared to the mainline CUBE surface, using the CARIS HIPS QC report routine.

Most beams fail the QC analysis. However, it is a known CARIS issue that beams often fail the QC analysis despite good matchup on steep slopes, and for the most part this survey is a steep slope.<sup>3</sup> The following figure is an example from CARIS subset mode showing the good general agreement between crossline soundings and a 5m BASE surface despite failing the QC routine.



**Figure 2 Crossline 3H02-TIE02 soundings compared to 5m BASE surface**

Note: The QC reports were generated based on the given accuracy specification of:

$$\pm \sqrt{(a^2 + (b * d)^2)} \text{ where } a = 0.2, b = 0.01, \text{ and } d = \text{depth.}$$

However, since a variance of a difference, rather than a variance from a mean is being used, the a and b values were defined in the user defined option within the CARIS HIPS QC Report routine as follows:

$$a = 0.2 * \sqrt{2} = 0.283$$

$$b = 0.01 * \sqrt{2} = 0.014$$

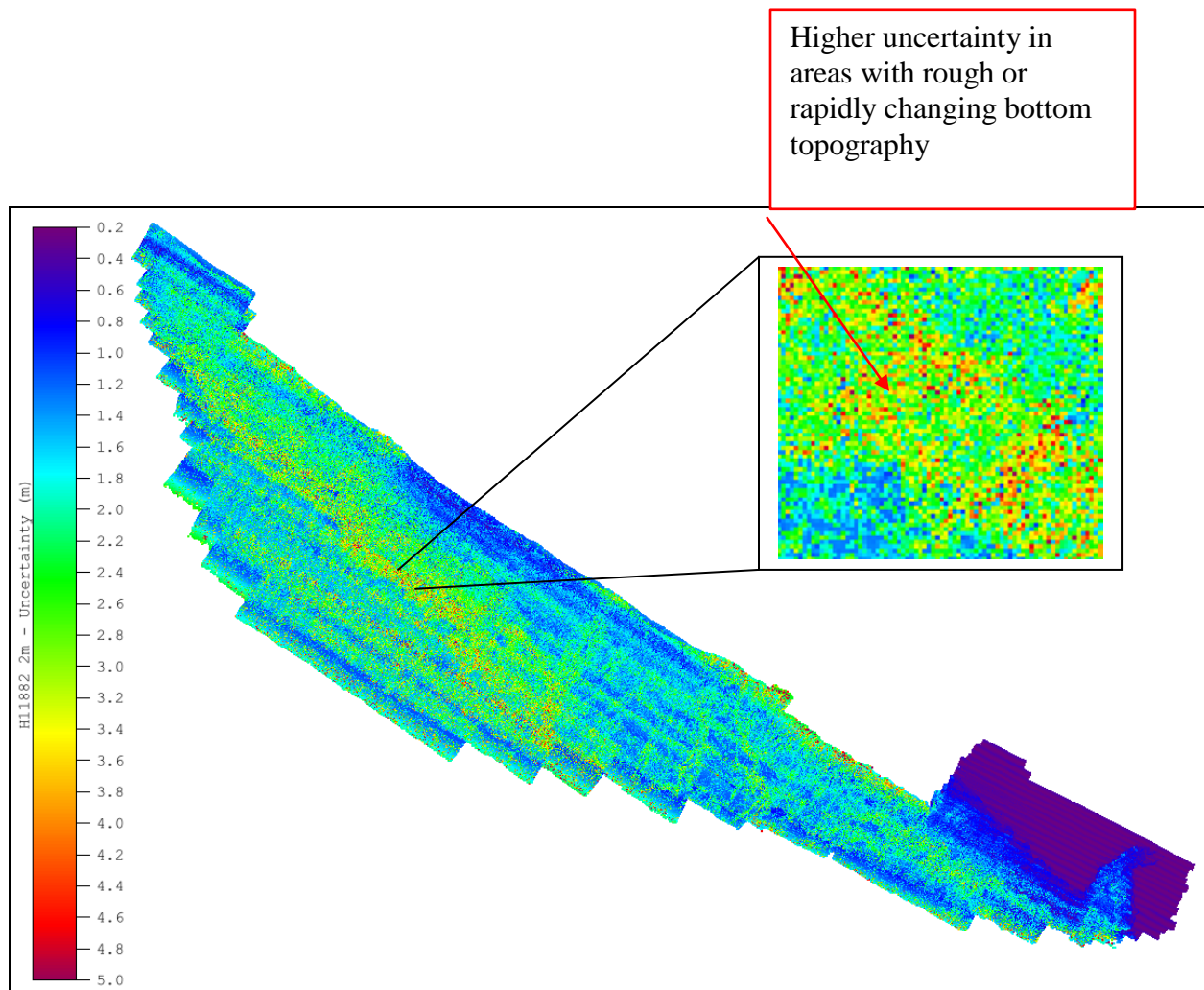
### Uncertainty Values

The majority of H11882 had uncertainty values of 0.30 m to 5.0 m, which met project specifications.<sup>4</sup>

As seen in the uncertainty surface, uncertainty is generally lowest near the sonar nadir beams and increases toward the outside of each swath. This is expected and primarily a result of sound velocity error uncertainty.

Oscillations from port to starboard along lines in the uncertainty surface are due to higher uncertainty computed due to vessel roll, again prevalent mostly in the outer beams.

Higher uncertainties are seen in areas of rough or rapidly changing bottom topography. However, despite high uncertainty in these areas, data matchup is good and the data acceptable for nautical charting purposes.<sup>5</sup>



**Figure 3 Uncertainty DTM**

### Survey Junctions

H11882 (Sheet H) junctions with:

Registry #	Date	Junction Side
H11881	2008	East (sheet limits only, survey extents do not overlap)

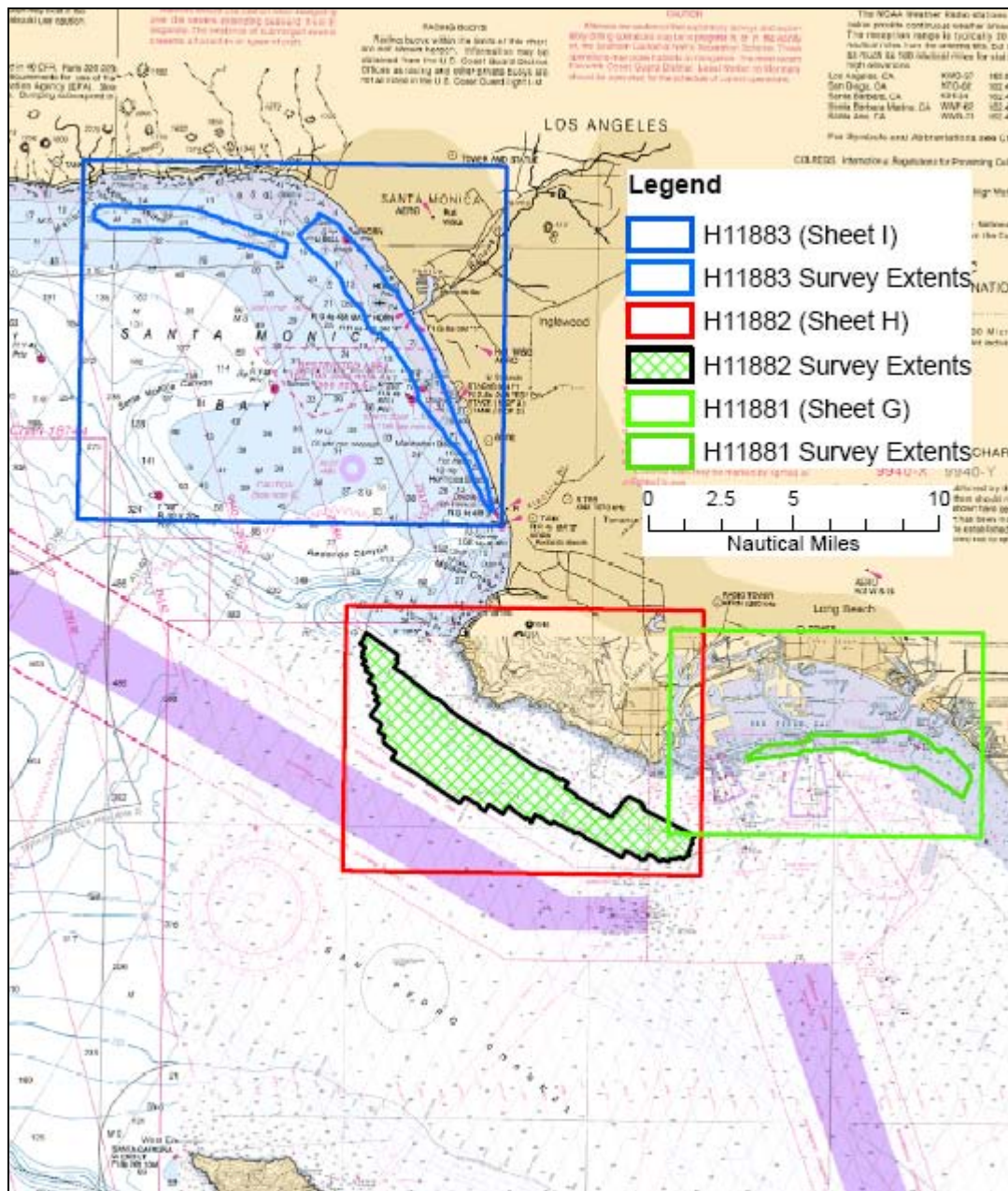


Figure 4 H11882 Survey Junctions



The survey extents do not overlap therefore they could not be compared.

### Quality Control Checks

Positioning system confidence checks were conducted on a daily basis using the POSMV controller software. The controller software had numerous real-time displays that were monitored throughout the survey to ensure the positional accuracies, specified in the NOS Hydrographic Surveys Specifications and Deliverables were achieved. These include, but are not limited to the following: GPS Status, Position Accuracy, Receiver Status (which included HDOP) and Satellite Status. During periods of high HDOP and/or low number of available satellites survey operations were stopped.

### Comparison of PPK-GPSTide and Zoned Verified Tides

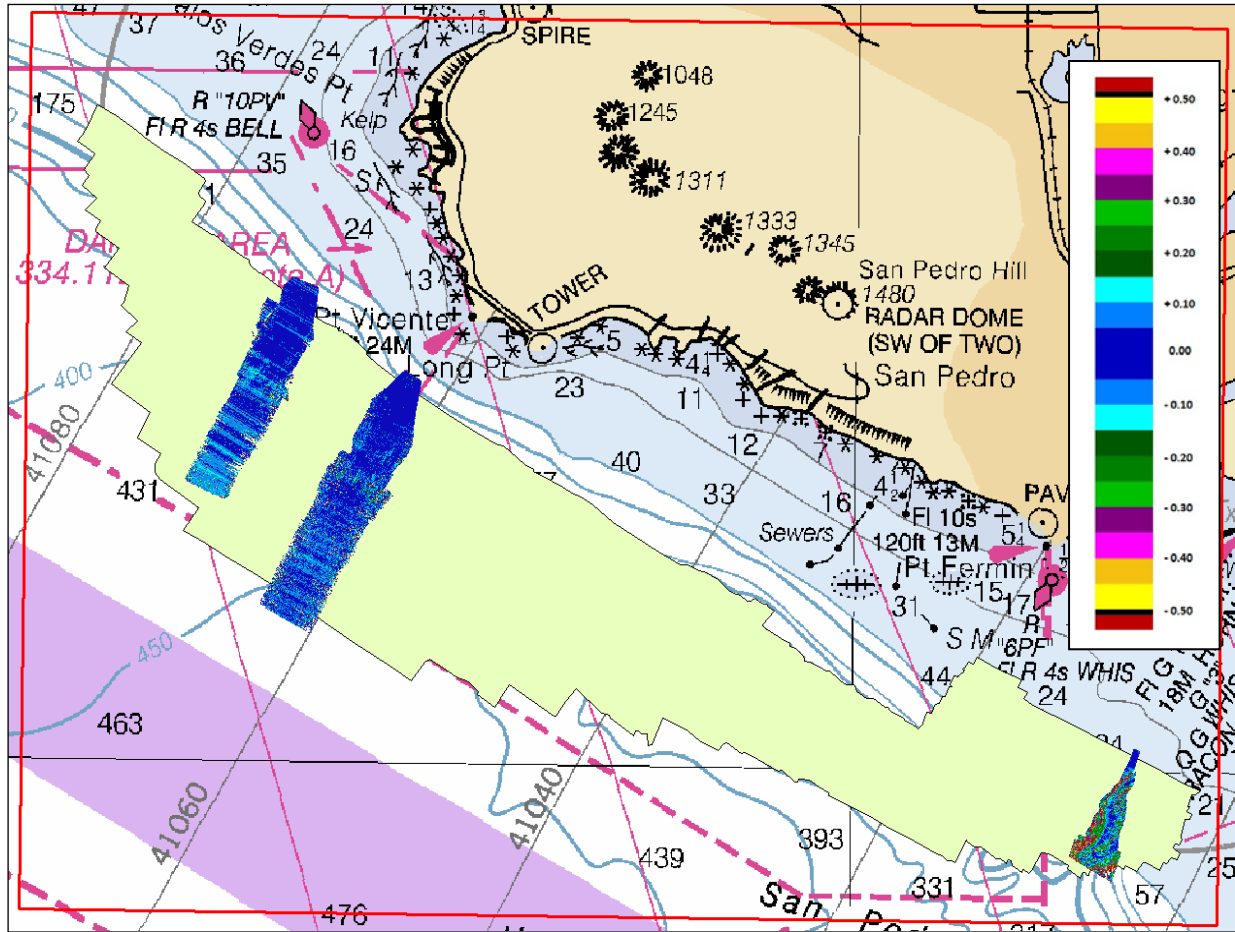
Tidal corrections for this survey were done using PPK-GPS derived altitudes which were reduced to MLLW using VDatum grids and the CARIS HIPS GPSTide function. Since conventional tidal data and zones were available, gross error and reality check comparisons were done between data corrected using both methods. The following tests were performed:

1. For a snapshot of general agreement throughout the survey area, a copy of the crossline data was corrected using zoned, verified smoothed tides, and dynamic draft correctors applied. QC reports were then generated in HIPS for these “tidal” crosslines versus the BASE surfaces (GPSTide method) in the same manner described in the crossline comparison section above.

Results: Most “tidal” beams fail the QC routine. However, so did most standard crosslines for the reasons outlined in the crossline section above. Results are available in Separate IV.

2. In order to identify and quantify any static offsets between the two processing methods, a difference surface was created in IVS Fledermaus using a CUBE surface created from the crosslines and a CUBE surface created from the same crosslines corrected using zoned, verified smooth tides. (Difference surface = tidal surface minus GPSTide surface, both 10m resolution)

Results: Average difference was -0.037 m, median difference was -0.032 m, with a standard deviation of 0.350 m. Therefore, the GPSTide surface was about 4 cm shoaler on average. No significant trends were apparent.



**Figure 5 H11882 Difference Surface – Tidal minus GPSTide**

In conclusion, absolute correctness of one source of tidal correction over the other cannot be determined by direct comparisons between the two data sets. However, data corrected using both methods statistically compares very well to each other, and qualitatively the matchup between adjacent lines is good using both methods. Therefore, for this survey, the GPSTide method of tidal correction meets specification and is an acceptable alternative to the standard tidal method.

#### Data Quality

In general, the multibeam data quality for H11882 was good. No problems to note.<sup>6</sup>

Sound velocity profiles were collected every two to three hours to compensate for velocity changes over time. Profiles were collected on alternate ends of lines, or often in the middle of lines, to minimize the spatial aspect of sound velocity changes.

Object detection requirements were met by minimizing vessel speed when necessary, using sonar range scales appropriate to the water depth to maximize ping rates, and maximizing swath

overlap. These variables were adjusted in real-time by the online acquisition crew based on the Winfrog QC and coverage displays. The office-based processing crew provided feedback after preliminary processing and coverage creation in CARIS HIPS, and reported re-runs or in-fills as necessary to the acquisition crew.

Refer to the M-L906-KR-08 Data Acquisition and Processing Report for a detailed description of the survey equipment and methodology used over the course of this survey.

### B.3 Corrections to Echo Soundings

Refer to the M-L906-KR-08 Data Acquisition and Processing Report for a detailed description of all corrections to echo soundings. No deviations from the report occurred.

### B.4 Data Processing

Refer to the M-L906-KR-08 Data Acquisition and Processing Report for a detailed description of the processing flow.

The final fieldSheet for H11882 is called “H11882” and it contains five BASE surfaces. The following parameters were used:

- 0-45 meters: 1.5 m resolution, name “H11882\_1\_5m”
- 40-84 meters: 2 m resolution, name “H11882\_2m”
- 80-100 meters: 4 m resolution, name “H11882\_4m”
- 90-250 meters: 5 m resolution, name “H11882\_5m”
- 230-max depth: 10 m resolution, name “H11882\_10m”

Note: Minimum depth in this survey was approximately 31 m, while max depth was approximately 829 m, therefore resolutions finer than 1\_5 m and coarser than 10 m were not computed.

The final S57 file for this project is called “H11882\_S57\_Features.000”. This file contains the object and metadata S57 objects as required in the Specifications and Deliverables.

## C. VERTICAL AND HORIZONTAL CONTROL

Refer to the M-L906-KR-08 Horizontal and Vertical Control Report<sup>7</sup> for a detailed description of the horizontal and vertical control used on this survey. No deviations from the report occurred. A summary of the project's horizontal and vertical control follows.

### Horizontal Control

The horizontal control datum for this survey was the North American Datum of 1983 (NAD83).

For real-time DGPS corrections, a CSI MBX-3 unit tuned to the Pt. Loma USCG DGPS site was used. The unit output differentially corrected positions at 1 Hz to the POSMV 320 V4 where it was integrated with inertial data and a position for the top-center of the IMU was generated. This position was then logged concurrently with the bathymetry by Winfrog and logged to the POS file by Winfrog POS logger. It was later corrected for offsets to the MBES sonar by CARIS HIPS in processing.

Final positioning, however, was done using post-processed kinematic (PPK) methods. Applanix POSpac software was used in conjunction with the POS files and local base station data to generate a higher accuracy position which was applied in processing, replacing the real-time position records.

See M-L906-KR-08 Horizontal and Vertical Control Report for a more detailed description of PPK positioning methods used.

### Vertical Control

All sounding data were initially reduced to MLLW using predicted tidal data from the Los Angeles (9410660) tide station. Predicted tides were used only for preliminary data cleaning.

Final tidal corrections were generated using PPK processing methods in conjunction with NOAA's VDATUM model and the CARIS GPSTide routine. Applanix POSpac software produced a smoothed best estimate of trajectory (SBET) file that, among other data, contained GPS altitudes based on the NAD83 ellipsoid. The SBET altitudes were loaded in to every line in CARIS HIPS, and HIPS' GPSTide routine then run to compute a GPS-based tide. The GPSTide routine used a VDatum NAD83 to MLLW offset grid to produce MLLW tide correctors. This grid is an XYZ text file and is included with the CARIS data under the tide directory.

See M-L906-KR-08 Horizontal and Vertical Control Report for a more detailed description of the GPSTide methods.

## D. RESULTS AND RECOMMENDATIONS

### D.1 Chart Comparison

H11882 survey was compared with the charts shown on Table 2<sup>8</sup>.

**Table 2 – Chart Comparisons**

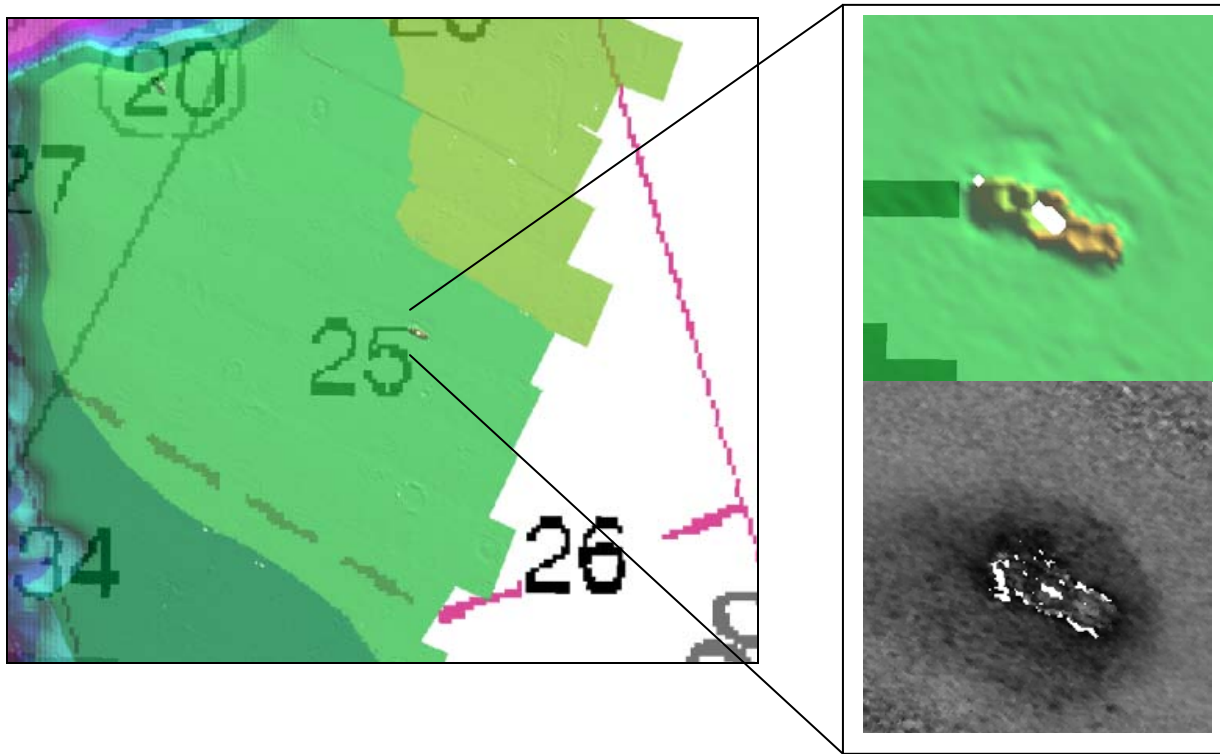
Chart Number	Type	Cell Name	Scale	Edition	Edition Date
18744	Raster	n/a	1:40,000	32 <sup>nd</sup>	March 2006
18746	Raster	n/a	1:80,000	37 <sup>th</sup>	August 2007
18740	Raster	n/a	1:234,270	42 <sup>nd</sup>	March 2007
18740	ENC	US3CA70M	n / a	11 <sup>th</sup>	September 2008
18746	ENC	US4CA60M	n/a	6 <sup>th</sup>	August 2008

#### Comparison of Soundings

A comparison of soundings was accomplished by generating shoal-biased soundings and contours in the CARIS FieldSheet Editor and overlaying them on the latest edition NOAA charts. The general agreement between charted soundings and H11882 soundings was noted. A more detailed comparison was undertaken for any charted shoals or other dangerous features.

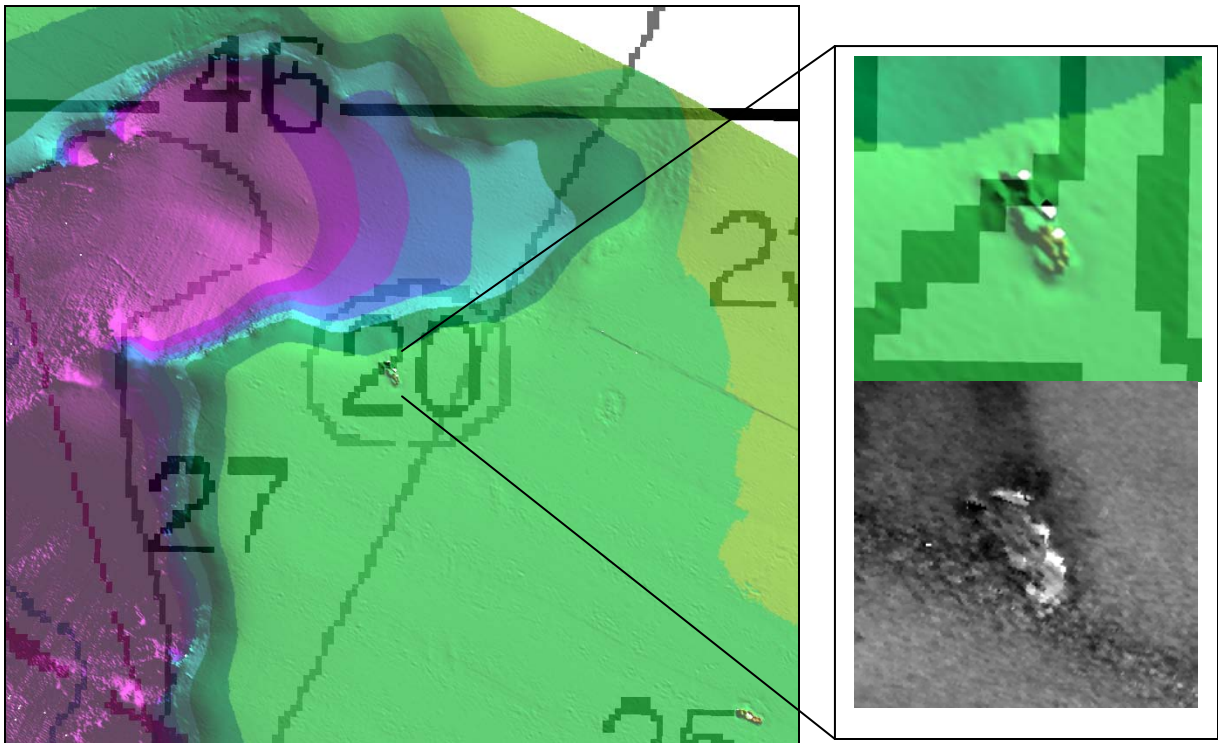
Agreement between soundings on this survey and all charts is good (Raster and ENC), with BASE surface depths comparing to charted soundings generally within +/- 1 fathom. Exceptions are noted below.

1. 126 fathom sounding on charts 18744 and 18746 at 33-46-04.30 N, 118-28-40.14 W was not found by this survey. Depths in the vicinity of the sounding are approximately 160 fathoms. Recommend removal and replacement with soundings from this survey<sup>9</sup>.
2. Other slight discrepancies in soundings on the steep slopes of the escarpment on chart 18746. These are most likely due to horizontal positioning error of the sounding causing a large difference in depth due to the slope. Recommend soundings from this survey supersede those charted on the slopes<sup>10</sup>.
3. A feature strongly resembling a wreck is apparent in the BASE surface at 33-39-34.07 N, 118-16-01.36 W in approximately 44 meters of water. The 38-meter long feature appears conspicuously wreck-like in the processed multibeam backscatter as well. This feature is not charted and is not in the AWOIS database. Recommend charting wreck<sup>11</sup> and addition to the AWOIS database.



**Figure 6 Item #3: 1.5 m resolution multibeam and 0.5 m resolution backscatter**

4. Another feature strongly resembling a wreck is apparent nearby in the BASE surface at 33-39-48.60 N, 118-16-20.03 W in approximately 48 meters of water. The 38-meter long feature appears conspicuously wreck-like in the processed multibeam backscatter as well, though it is slightly less well defined than the previous feature. This feature is not charted and is not in the AWOIS database. Recommend charting wreck<sup>12</sup> and addition to the AWOIS database.



**Figure 7 Item #4: 1.5 m resolution multibeam and 0.5 m resolution backscatter**

Automated Wreck and Observation Information System

There were no AWOIS items assigned to H11882<sup>13</sup>. Two recommended additions are described above.

Charted Features

There were no charted features labeled ED, PD, or PA within the limits of H11882<sup>14</sup>.

Dangers to Navigation

No dangers to navigation were found during this survey.

D.2 Additional Results

None to note.

### Bottom Samples

None were assigned for this sheet<sup>15</sup>.

### Aids to Navigation

No charted aids to navigation existed in the survey area<sup>16</sup>.

No uncharted aids to navigation were found in the survey area<sup>17</sup>.



## E. APPROVAL SHEET



### Approval Sheet

For

**H11882**

Standard field surveying and processing procedures were followed in producing this survey in accordance with the following documents:


M-L906-KR-08 Statement of Work  
NOS Hydrographic Surveys Specifications and Deliverables, April 2008 Edition  
Fugro Pelagos, Inc. Acquisition Procedures (2008- NOAAAcquisitionProcedures);  
Fugro Pelagos, Inc. Processing Procedures (2008-NOAAProcessingProcedures);

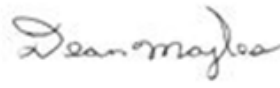
The data were reviewed daily during acquisition and processing, and the survey is complete and adequate for its intended purpose.

This report has been reviewed and approved. All records are forwarded for final review and processing to the Chief, Pacific Hydrographic Branch.

Approved and forwarded,

Dean Moyles,  
Lead Hydrographer  
Fugro Pelagos, Inc. Survey Party

 Invalid signature

X 

---

Dean Moyles  
ACSM Certified

---

<sup>1</sup> Concur

<sup>2</sup> Filed with project records

<sup>3</sup> Despite failing QC tests a review of the crosslines in CARIS subset editor shows good agreement between mainscheme and crossline data.

<sup>4</sup> Concur

<sup>5</sup> Concur

<sup>6</sup> Concur

<sup>7</sup> Filed with project records.

<sup>8</sup> Harbor Chart 18749 (42<sup>nd</sup> Ed, Aug. 08, 1:20,000 – soundings in feet) is not listed. The southeasternmost part of the survey falls on this chart.

<sup>9</sup> Concur

<sup>10</sup> Concur

<sup>11</sup> Concur

<sup>12</sup> Concur

<sup>13</sup> Concur

<sup>14</sup> Concur

<sup>15</sup> Concur. All charted bottom samples were retained.

<sup>16</sup> Concur

<sup>17</sup> Concur

**H11882 HCell Report**  
Kurt Brown, Physical Scientist  
Pacific Hydrographic Branch

**Introduction**

The primary purpose of the HCell is to directly update NOAA ENC's with new survey information in International Hydrographic Organization (IHO) format S-57. HCell compilation of survey H11882 utilized Office of Coast Survey H-Cell Specifications Version 3.0, May 2008 and Hcell User Guide Version 1.1, June 2008. HCell H11882 will be used to update charts 18740, 1:234,270 (42<sup>nd</sup> Ed.; March 2007, NM 03/31/2007), 18746, 1:80,000 (37<sup>th</sup> Ed.; Aug 2007, NM 08/11/2007), 18744, 1:40,000 (32<sup>nd</sup> Ed.; March 2006, NM 03/26/2006) 18749, 1:20,000 (42<sup>nd</sup> Ed.; August, 2008, NM 08/30/2008), US3CA70M and US4CA60M, US5CA61M.

**1. Compilation Scale**

The density of soundings in the HCell are compiled as appropriate to emulate those soundings of Chart 18746, 1:80,000, 18744, 1:40,000 and 18749, 1:20,000. Position and density of non-bathymetric features included in the HCell have not been generalized from the scale of the hydrographic survey H11882.

**2. Soundings**

**2.1 Source Data**

One 10-meter resolution Combined BASE surface, **H11882\_Combined\_Office\_10m** was used as the basis for HCell production following Branch certification.

A survey-scale sounding (SOUNDG) feature object source layer was built from the **H11882\_Combined\_Office\_10m** surface in CARIS BASE Editor. A shoal-biased selection was made at 1:10,000 survey scale using a radius table with values shown in **Table 1**.

Upper limit (m)	Lower limit (m)	Radius (mm)
0	10	3
10	20	4
20	50	4.5
50	1000	5

**Table 1**

## **2.2 Sounding Feature Objects**

In CARIS BASE Editor soundings were manually selected from the high density sounding layer from H11882 and imported into a new layer created to accommodate chart density depths. Manual selection was used to accomplish a density and distribution that more closely represents the seafloor morphology and that emulates density and distribution of soundings on charts 18746, 18744 and 18749 than is possible using automated methods. See section 10.1, Data Processing Notes, for details about the use of manual sounding selection for H11882. The sounding feature object source layer was imported into the **H11882\_HCell\_Features.hob** file, which was used as a template to create the S-57 Composer product **H11882\_CS.prd**.

## **3. Depth Areas**

### **3.1 Source Data**

Using the combined BASE surface **H11882\_Combined\_Office\_10m** one depth area was generated. No depth contours were delivered per OCS HCell Specifications ver.3.0 and Hcell User Guide ver. 1.1.

### **3.2 Depth Area Feature Objects**

One depth range, 25 meters to 840 meters, was used the depth area object. Upon conversion to NOAA charting units, this depth range is 13.7 fathoms to 459.3 fathoms.

## **4. Meta Areas**

The following Meta object areas are included in HCell 11882:

M\_QUAL      M\_CSCL  
M\_COVR

Meta area objects were constructed on the basis of perimeter lines delineating the surveyed limits and extents of data gaps inside the survey area. These perimeters were first used to create the Skin of The Earth (SOTE) layer, then were duplicated to the Meta object layers and attributed per the H-Cell Specifications, ver. 3.0 and HCell User Guide ver. 1.1.

## 5. Survey Features

A features file **H11882\_S57\_Features.000** was delivered. The file contained two wrecks.

The new wrecks are included in the HCell as delivered.

Bottom sample features were imported from ENC's US3DA70M, US4CA60M, and US5CA61M.

## 6. Shoreline / Tide Delineation

Depth areas (DEPARE) were created for all SOTE features.

## 7. Attribution

All S-57 Feature Objects have been attributed as fully as possible based on information provided by the Hydrographer and in accordance with OCS HCell Specifications, ver. 3.0 and Hcell User Guide ver. 1.1.

## 8. Layout

### 8.1 CARIS S-57 Composer Scheme

SOUNDG	Chart scale soundings
DEPARE	Group 1 objects (Skin of the Earth)
SBDARE	Bottom samples from chart
WRECKS	Wreck
M_COVR	Data coverage meta object
M_QUAL	Data quality meta object
\$CSYMB	Blue notes

### 8.2 Blue Notes

Notes regarding data sources are in S-57 Composer as a \$CSYMB feature with the blue note located in the INFORM field and the survey registry number, chart number, chart edition and edition date located in the NINFOM field. The blue notes are included in the HCell when it is exported to .000. The blue notes are also included as a separate ASCII file **H11882\_Bluenotes.txt**.

## 9. Spatial Framework

### 9.1 Coordinate System

All spatial map and base cell file deliverables are in an LLDG geographic coordinate system, with WGS84 horizontal, MHW vertical, and MLLW (1983-2001 NTDE) sounding datums.

### 9.2 Horizontal and Vertical Units

During creation of sounding sets in CARIS BASE Editor, and creation of the HCell in CARIS S-57 Composer, units are maintained as metric with millimeter resolution. NOAA rounding is applied at the same time that conversion to chart units is made to the metric HCell base cell file, at the end of the HCell compilation process.

A CARIS environment variable, `uslXsounding_round`, controls the depth at which rounding occurs. Setting this variable to NOAA feet displays all soundings as whole units.

In an ENC viewer feet display in whole feet. Soundings round to the deeper foot if the decimals of the foot are .75000 or greater.

#### HOM Units

Sounding Units:	Meters rounded to the nearest millimeter
Spot Height Units:	Meters rounded to the nearest meter

#### Chart Unit Base Cell Units

Depth Units (DUNI):	Feet
Height Units (HUNI):	Feet
Positional Units (PUNI):	Meters

## 10. QA/QC

### 10.1 Data Processing Notes

Manual chart scale sounding selections were made for this survey. Experience has shown that in areas where bathymetry is varied, as in the case of varied topography on the sea floor, automated sounding selection is impractical. None of the default sounding suppression options offered in CARIS BASE Editor or S-57 Composer yields an acceptable density and distribution of depths, generally bunching soundings nearshore with too sparse coverage seaward. While the customized options are more practical for this type of terrain, an inordinate amount of time must be spent in experimentation with variations on the algebraic terms in order to devise the most suitable formula, and manual adjustments are still required to the resulting sounding set.

## 10.2 ENC Validation Checks

H11882 was subjected to QA and Validation checks in S-57 Composer prior to exporting to the HCell base cell (000) file. Full millimeter precision was retained in the export of the metric S-57 base cell data set. This data set was converted to a chart unit 000 file. dKart Inspector 5.1 was then used to further check the data set for conformity using the S-58 ver. 2 standard (formerly Appendix B.1 Annex C of the S-57 standard). All tests were run and errors investigated and corrected where necessary.

## 11. Products

### 11.1 HSD, MCD and CGTP Deliverables

- H11882 Base Cell File, Chart Units, Soundings compiled to 1:20,000, 1:40,000, 1:80,000
- H11882 Base Cell File, Chart Units, Soundings compiled to 1:10,000
- H11882 Descriptive Report including end notes compiled during office processing and certification
- H11882 HCell Supplemental Report
- Blue Notes ASCII file

### 11.2 File Naming Conventions

S-57 Composer Product prefix: *H11882\_CS.prd and H11882\_SS.prd*

MCD Chart units base cell file: *US511882\_CS.000*

MCD Chart units base cell file, survey scale soundings: *US511882\_SS.000*

### 11.3 Software

HIPS 6.1:	Management and inspection of Combined BASE surfaces
BASE Editor 2.1:	Combination of Product Surfaces and initial creation of the S-57 bathymetry-derived features
CARIS Notebook 3.0:	Management and inspection of shoreline files
S-57 Composer 2.0:	Assembly of the HCell, S-57 products export, QA
HOM 3.3:	Assembly of the HCell, S-57 products unit conversion and sounding rounding
GIS 4.4a:	Setting the sounding rounding variable
dKart Inspector 5.1:	Validation of the base cell file

## **12. Contacts**

Inquiries regarding this HCell content or construction should be directed to:

Kurt Brown, Physical Scientist, PHB, Seattle, WA; 206-526-6839;  
kurt.brown@noaa.gov.



APPROVAL SHEET  
H11882

Initial Approvals:

The survey evaluation and verification has been conducted according to branch processing procedures and the HCell compiled per the latest OCS H-Cell Specifications.

The survey and associated records have been inspected with regard to survey coverage, delineation of the depth curves, development of critical depths, S-57 classification and attribution of soundings and features, cartographic characterization, and verification or disproval of charted data within the survey limits. The survey records and digital data comply with OCS requirements except where noted in the Descriptive Report and are adequate to supersede prior surveys and nautical charts in the common area.

I have reviewed the HCell, accompanying data, and reports. This survey and accompanying digital data meet or exceed OCS requirements and standards for products in support of nautical charting except where noted in the Descriptive Report.