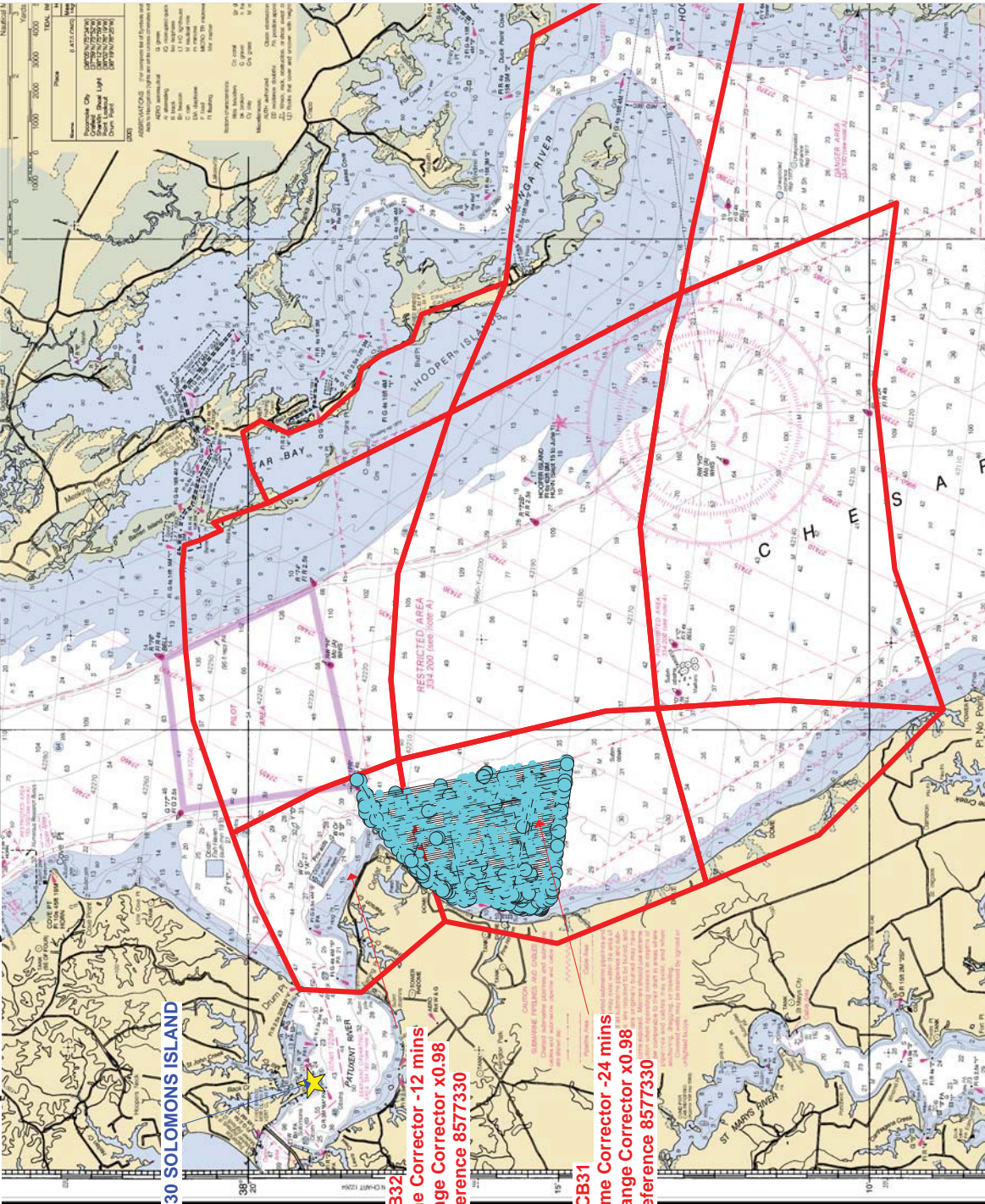


Preliminary as Final Tidal Zoning for OPR-E349-BH-2010, H11918 Central Chesapeake Bay, MD

has been prepared to comply with the National
Oceanic and Atmospheric Administration's (NOAA) requirements for
OPR-E349-BH-2010, H11918, Tidal Zoning Study.

8577330 SOLOMONS ISLAND

8577330 SOLOMONS ISLAND



12233 LORAN-C OVERPRINTED

NCB321
Time Corrector -12 mins
Range Corrector x0.98
Reference 8577330

NCB31
Time Corrector -24 mins
Range Corrector x0.98
Reference 8577330



12233