

B.3. CORRECTIONS TO ECHO SOUNDING

HDCS sounding data were reduced to mean lower-low water (MLLW) using verified water levels from the primary stations 8448725, Menemsha, MA and 8452660, Newport, RI and adjusted for Tidal Constituents and Residuals (TCARI) provided by CO-OPS as specified in the Letter Instructions* and illustrated in Figure B-2. **Concur**

The TCARI zoning does not fully encompass Menemsha Pond. Final zoning and tides were received from COOPS but did not include this area. COOPS guidance in the email dated 29 Sep, 2008 (see Appendix V**) indicates TCARI zoning was modified to allow extrapolation for this area. When TCARI was applied to this data, a “data outside of zone” error was generated in PYDRO. Subsequently, sounding data acquired outside the TCARI zone were reduced to mean lower-low water (MLLW) using verified water levels from the primary station 8448725, Menemsha, MA and were applied direct (no zoning). **Concur**

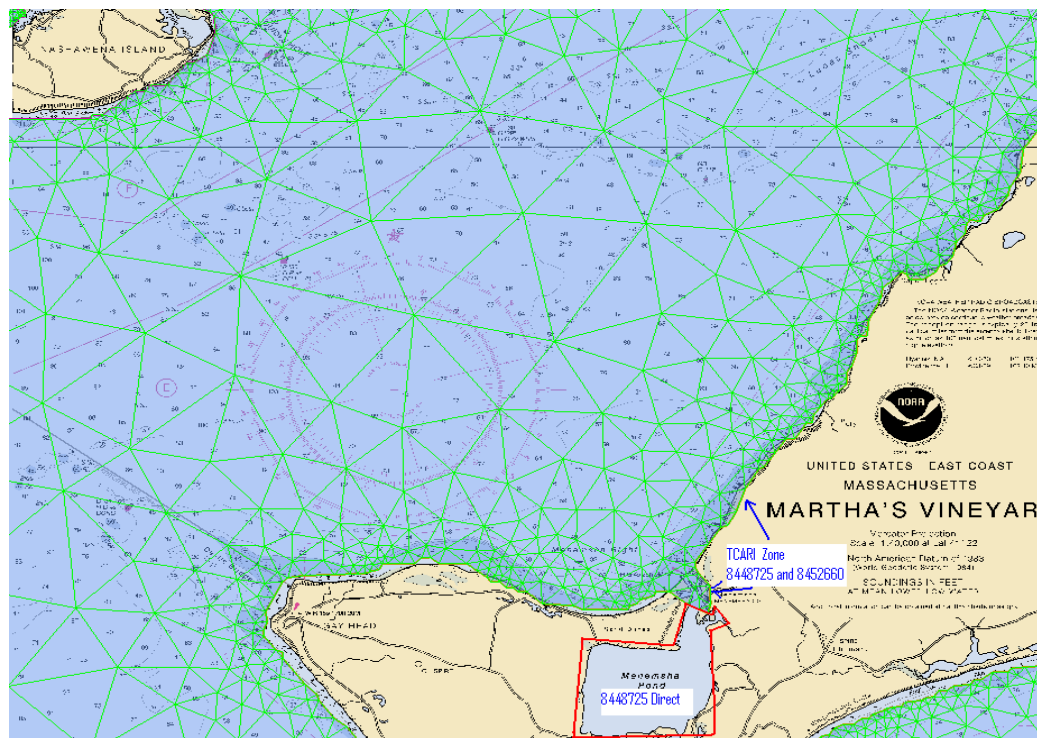


Figure B-2: Final Tide Zoning

***Filed with original field records.**

****Appended to this report.**