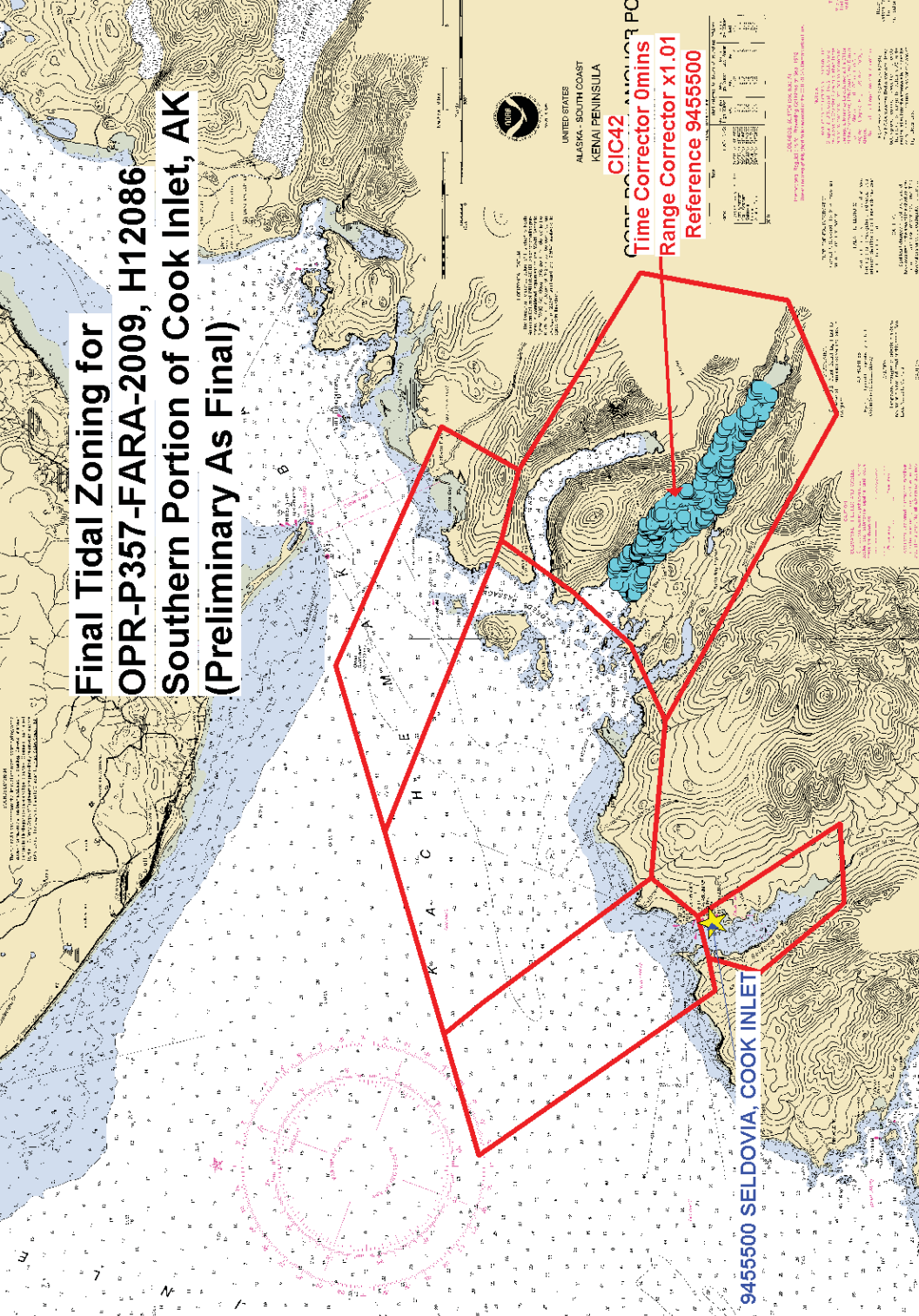


**Final Tidal Zoning for
OPR-P357-FARA-2009, H12086
Southern Portion of Cook Inlet, AK
(Preliminary As Final)**



UNITED STATES
ALASKA - SOUTH COAST
KENAI PENINSULA

CIC42
Time Corrector 0mins
Range Corrector x1.01
Reference 9455500

Year	Time Corrector	Range Corrector	Reference
1984	0	1.01	9455500
1985	0	1.01	9455500
1986	0	1.01	9455500
1987	0	1.01	9455500
1988	0	1.01	9455500
1989	0	1.01	9455500
1990	0	1.01	9455500
1991	0	1.01	9455500
1992	0	1.01	9455500
1993	0	1.01	9455500
1994	0	1.01	9455500
1995	0	1.01	9455500
1996	0	1.01	9455500
1997	0	1.01	9455500
1998	0	1.01	9455500
1999	0	1.01	9455500
2000	0	1.01	9455500
2001	0	1.01	9455500
2002	0	1.01	9455500
2003	0	1.01	9455500
2004	0	1.01	9455500
2005	0	1.01	9455500
2006	0	1.01	9455500
2007	0	1.01	9455500
2008	0	1.01	9455500
2009	0	1.01	9455500
2010	0	1.01	9455500
2011	0	1.01	9455500
2012	0	1.01	9455500
2013	0	1.01	9455500
2014	0	1.01	9455500
2015	0	1.01	9455500
2016	0	1.01	9455500
2017	0	1.01	9455500
2018	0	1.01	9455500
2019	0	1.01	9455500
2020	0	1.01	9455500
2021	0	1.01	9455500
2022	0	1.01	9455500

9455500 SELDOVIA, COOK INLET

NOTES:
1. This chart is based on the latest available data.
2. The soundings are in fathoms.
3. The depths are in fathoms.
4. The heights are in feet.
5. The bearings are in degrees true.
6. The distances are in miles.
7. The bearings are in degrees true.
8. The distances are in miles.
9. The bearings are in degrees true.
10. The distances are in miles.