

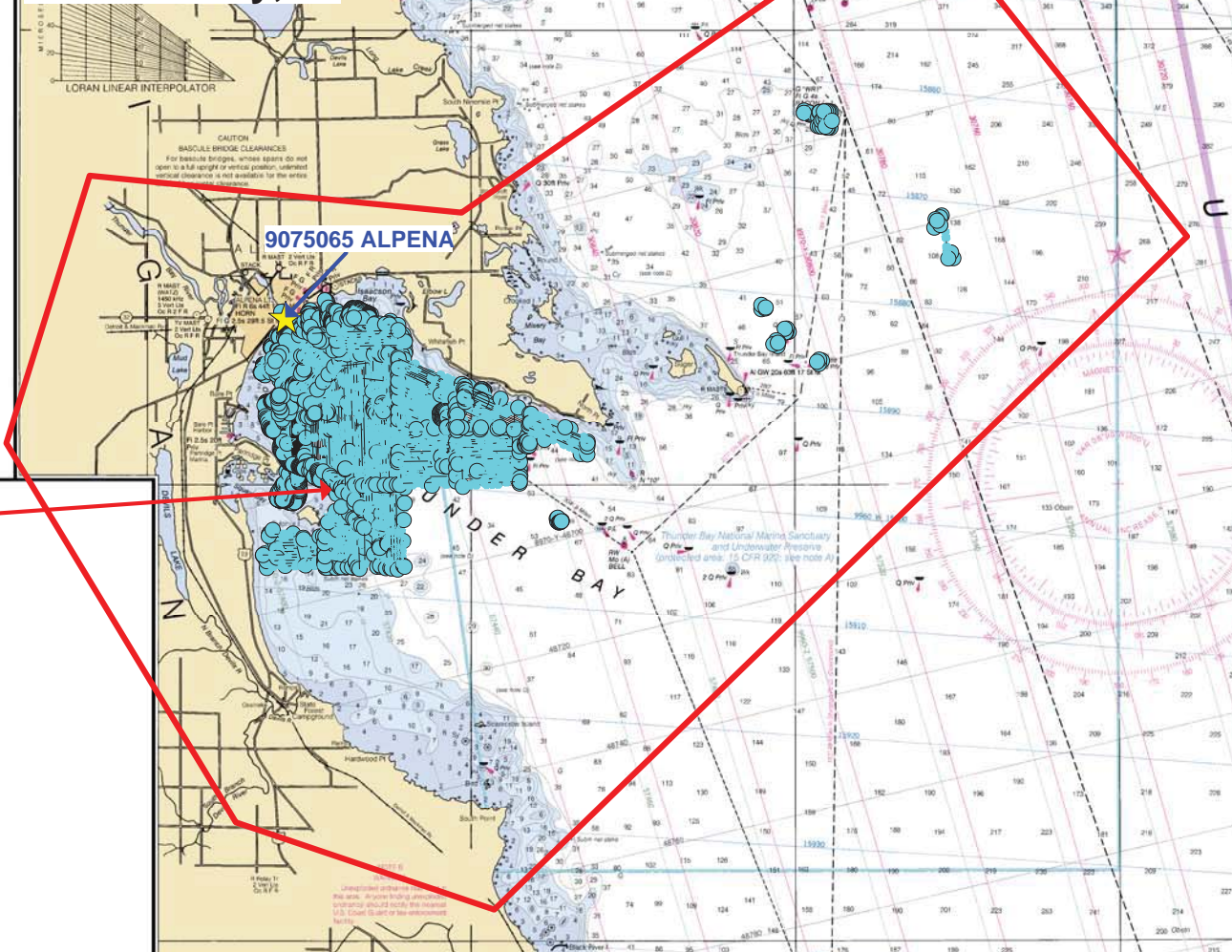
tide stations listed
 are weather forecast
 in volume, but for
 40 miles from the
 average level 1 year 2010
 Low Water Datum, which is the plane of reference for the
 levels shown on the above hydrograph, is the plane of
 reference for the charted depths. If the latter level is above
 or below Low Water Datum, the resulting depths are correspond-
 ingly greater or lesser than the charted depths.

METER
 60
 40
 20
 0
 -20
 -40
 -60
 -80
 -100
 -120
 -140
 -160
 -180
 -200
 -220
 -240
 -260
 -280
 -300
 -320
 -340
 -360
 -380
 -400
 -420
 -440
 -460
 -480
 -500
 -520
 -540
 -560
 -580
 -600
 -620
 -640
 -660
 -680
 -700
 -720
 -740
 -760
 -780
 -800
 -820
 -840
 -860
 -880
 -900
 -920
 -940
 -960
 -980
 -1000
 -1020
 -1040
 -1060
 -1080
 -1100
 -1120
 -1140
 -1160
 -1180
 -1200
 -1220
 -1240
 -1260
 -1280
 -1300
 -1320
 -1340
 -1360
 -1380
 -1400
 -1420
 -1440
 -1460
 -1480
 -1500
 -1520
 -1540
 -1560
 -1580
 -1600
 -1620
 -1640
 -1660
 -1680
 -1700
 -1720
 -1740
 -1760
 -1780
 -1800
 -1820
 -1840
 -1860
 -1880
 -1900
 -1920
 -1940
 -1960
 -1980
 -2000
 -2020
 -2040
 -2060
 -2080
 -2100
 -2120
 -2140
 -2160
 -2180
 -2200
 -2220
 -2240
 -2260
 -2280
 -2300
 -2320
 -2340
 -2360
 -2380
 -2400
 -2420
 -2440
 -2460
 -2480
 -2500
 -2520
 -2540
 -2560
 -2580
 -2600
 -2620
 -2640
 -2660
 -2680
 -2700
 -2720
 -2740
 -2760
 -2780
 -2800
 -2820
 -2840
 -2860
 -2880
 -2900
 -2920
 -2940
 -2960
 -2980
 -3000
 -3020
 -3040
 -3060
 -3080
 -3100
 -3120
 -3140
 -3160
 -3180
 -3200
 -3220
 -3240
 -3260
 -3280
 -3300
 -3320
 -3340
 -3360
 -3380
 -3400
 -3420
 -3440
 -3460
 -3480
 -3500
 -3520
 -3540
 -3560
 -3580
 -3600
 -3620
 -3640
 -3660
 -3680
 -3700
 -3720
 -3740
 -3760
 -3780
 -3800
 -3820
 -3840
 -3860
 -3880
 -3900
 -3920
 -3940
 -3960
 -3980
 -4000
 -4020
 -4040
 -4060
 -4080
 -4100
 -4120
 -4140
 -4160
 -4180
 -4200
 -4220
 -4240
 -4260
 -4280
 -4300
 -4320
 -4340
 -4360
 -4380
 -4400
 -4420
 -4440
 -4460
 -4480
 -4500
 -4520
 -4540
 -4560
 -4580
 -4600
 -4620
 -4640
 -4660
 -4680
 -4700
 -4720
 -4740
 -4760
 -4780
 -4800
 -4820
 -4840
 -4860
 -4880
 -4900
 -4920
 -4940
 -4960
 -4980
 -5000
 -5020
 -5040
 -5060
 -5080
 -5100
 -5120
 -5140
 -5160
 -5180
 -5200
 -5220
 -5240
 -5260
 -5280
 -5300
 -5320
 -5340
 -5360
 -5380
 -5400
 -5420
 -5440
 -5460
 -5480
 -5500
 -5520
 -5540
 -5560
 -5580
 -5600
 -5620
 -5640
 -5660
 -5680
 -5700
 -5720
 -5740
 -5760
 -5780
 -5800
 -5820
 -5840
 -5860
 -5880
 -5900
 -5920
 -5940
 -5960
 -5980
 -6000
 -6020
 -6040
 -6060
 -6080
 -6100
 -6120
 -6140
 -6160
 -6180
 -6200
 -6220
 -6240
 -6260
 -6280
 -6300
 -6320
 -6340
 -6360
 -6380
 -6400
 -6420
 -6440
 -6460
 -6480
 -6500
 -6520
 -6540
 -6560
 -6580
 -6600
 -6620
 -6640
 -6660
 -6680
 -6700
 -6720
 -6740
 -6760
 -6780
 -6800
 -6820
 -6840
 -6860
 -6880
 -6900
 -6920
 -6940
 -6960
 -6980
 -7000
 -7020
 -7040
 -7060
 -7080
 -7100
 -7120
 -7140
 -7160
 -7180
 -7200
 -7220
 -7240
 -7260
 -7280
 -7300
 -7320
 -7340
 -7360
 -7380
 -7400
 -7420
 -7440
 -7460
 -7480
 -7500
 -7520
 -7540
 -7560
 -7580
 -7600
 -7620
 -7640
 -7660
 -7680
 -7700
 -7720
 -7740
 -7760
 -7780
 -7800
 -7820
 -7840
 -7860
 -7880
 -7900
 -7920
 -7940
 -7960
 -7980
 -8000
 -8020
 -8040
 -8060
 -8080
 -8100
 -8120
 -8140
 -8160
 -8180
 -8200
 -8220
 -8240
 -8260
 -8280
 -8300
 -8320
 -8340
 -8360
 -8380
 -8400
 -8420
 -8440
 -8460
 -8480
 -8500
 -8520
 -8540
 -8560
 -8580
 -8600
 -8620
 -8640
 -8660
 -8680
 -8700
 -8720
 -8740
 -8760
 -8780
 -8800
 -8820
 -8840
 -8860
 -8880
 -8900
 -8920
 -8940
 -8960
 -8980
 -9000
 -9020
 -9040
 -9060
 -9080
 -9100
 -9120
 -9140
 -9160
 -9180
 -9200
 -9220
 -9240
 -9260
 -9280
 -9300
 -9320
 -9340
 -9360
 -9380
 -9400
 -9420
 -9440
 -9460
 -9480
 -9500
 -9520
 -9540
 -9560
 -9580
 -9600
 -9620
 -9640
 -9660
 -9680
 -9700
 -9720
 -9740
 -9760
 -9780
 -9800
 -9820
 -9840
 -9860
 -9880
 -9900
 -9920
 -9940
 -9960
 -9980
 -10000

1:52.58 MHD
 1:52.59 MHD

Final Water Level Zoning for S-X905-NRT4-2010, H12132

Thunder Bay, MI



TB001
 Time Corrector 0 mins
 Range Corrector x 1.00
 Reference 9075065