

67°03'W

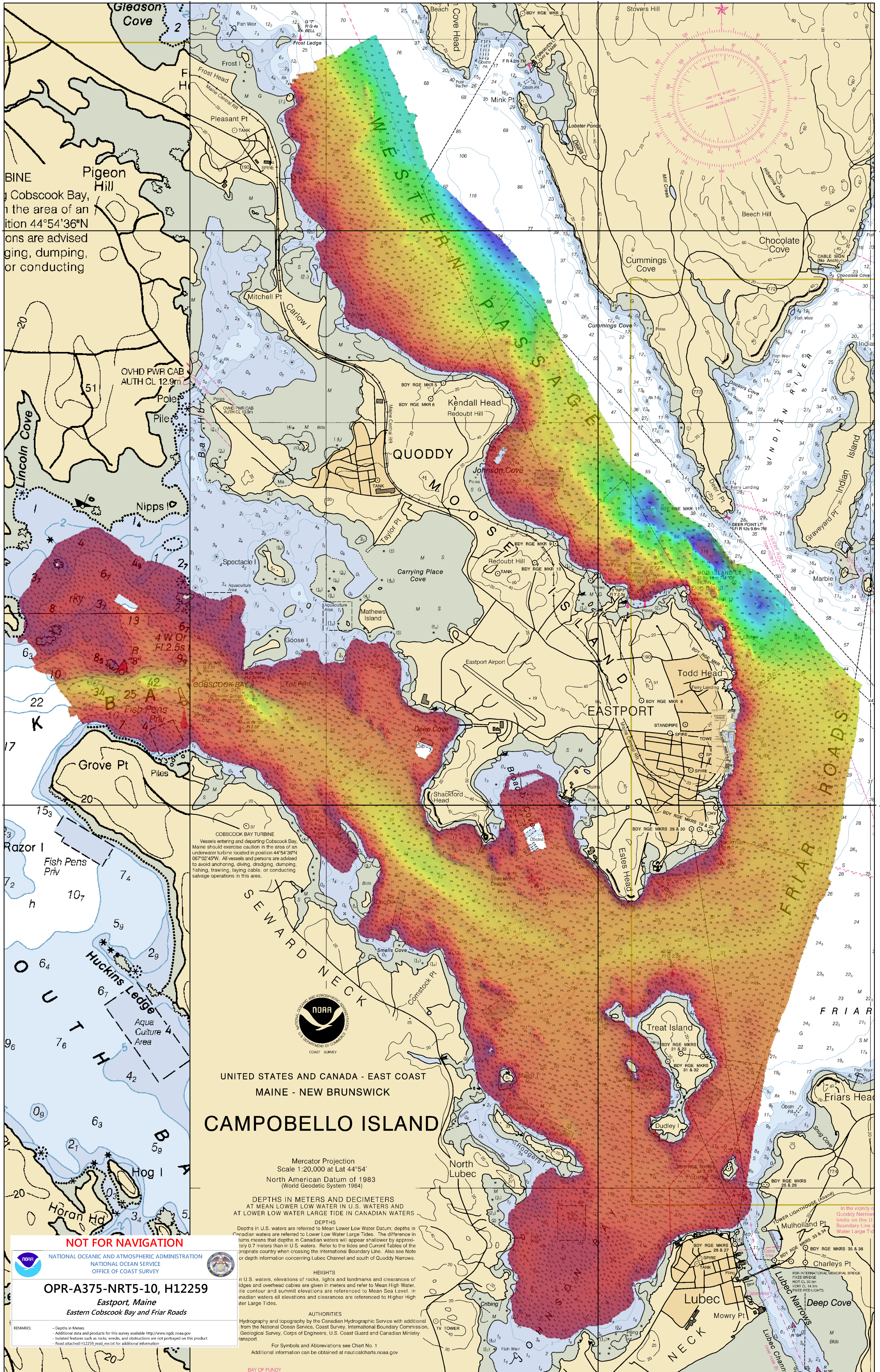
67°W

44° 57' N

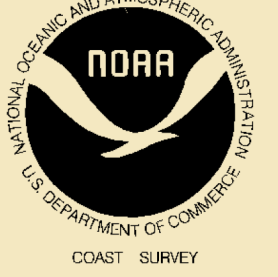
44° 57' N

44° 54' N

44° 54' N



COBSCOOK BAY TURBINE
 Vessels entering and departing Cobscook Bay, Maine should exercise caution in the area of an underwater turbine located in position 44°54'36"N 067°02'45"W. All vessels and persons are advised to avoid anchoring, diving, dredging, dumping, fishing, trawling, laying cable, or conducting salvage operations in this area.



UNITED STATES AND CANADA - EAST COAST
 MAINE - NEW BRUNSWICK
CAMPOBELLO ISLAND

Mercator Projection
 Scale 1:20,000 at Lat 44°54'
 North American Datum of 1983
 (World Geodetic System 1984)

DEPTHS IN METERS AND DECIMETERS
 AT MEAN LOWER LOW WATER IN U.S. WATERS AND
 AT LOWER LOW WATER LARGE TIDE IN CANADIAN WATERS

DEPTHS
 Depths in U.S. waters are referred to Mean Lower Low Water Datum; depths in Canadian waters are referred to Lower Low Water Large Tides. The difference in tides means that depths in Canadian waters will appear shallower by approximately 0.7 meters than in U.S. waters. Refer to the tides and Current Tables of the appropriate country when crossing the International Boundary Lines. Also see Note or depth information concerning Lubec Channel and south of Quoddy Narrows.

HEIGHTS
 In U.S. waters, elevations of rocks, lights and landmarks and clearances of ledges and overhead cables are given in meters and refer to Mean High Water. In Canadian waters all elevations and clearances are referred to Higher High Water Large Tides.

AUTHORITIES
 Hydrography and topography by the Canadian Hydrographic Service with additional from the National Ocean Service, Coast Survey, International Boundary Commission, Geological Survey, Corps of Engineers, U.S. Coast Guard and Canadian Ministry Transport.

For Symbols and Abbreviations see Chart No. 1
 Additional information can be obtained at nauticalcharts.noaa.gov

NOT FOR NAVIGATION

NATIONAL OCEANIC AND ATMOSPHERIC ADMINISTRATION
 NATIONAL OCEAN SERVICE
 OFFICE OF COAST SURVEY

OPR-A375-NRT5-10, H12259
 Eastport, Maine
 Eastern Cobscook Bay and Friar Roads

REMARKS:
 - Depths in Meters
 - Additional data and products for this survey available <http://www.ngdc.noaa.gov>
 - Isolated features such as rocks, wrecks, and obstructions are not portrayed on this product
 - Read attached H12259, next, next for additional information