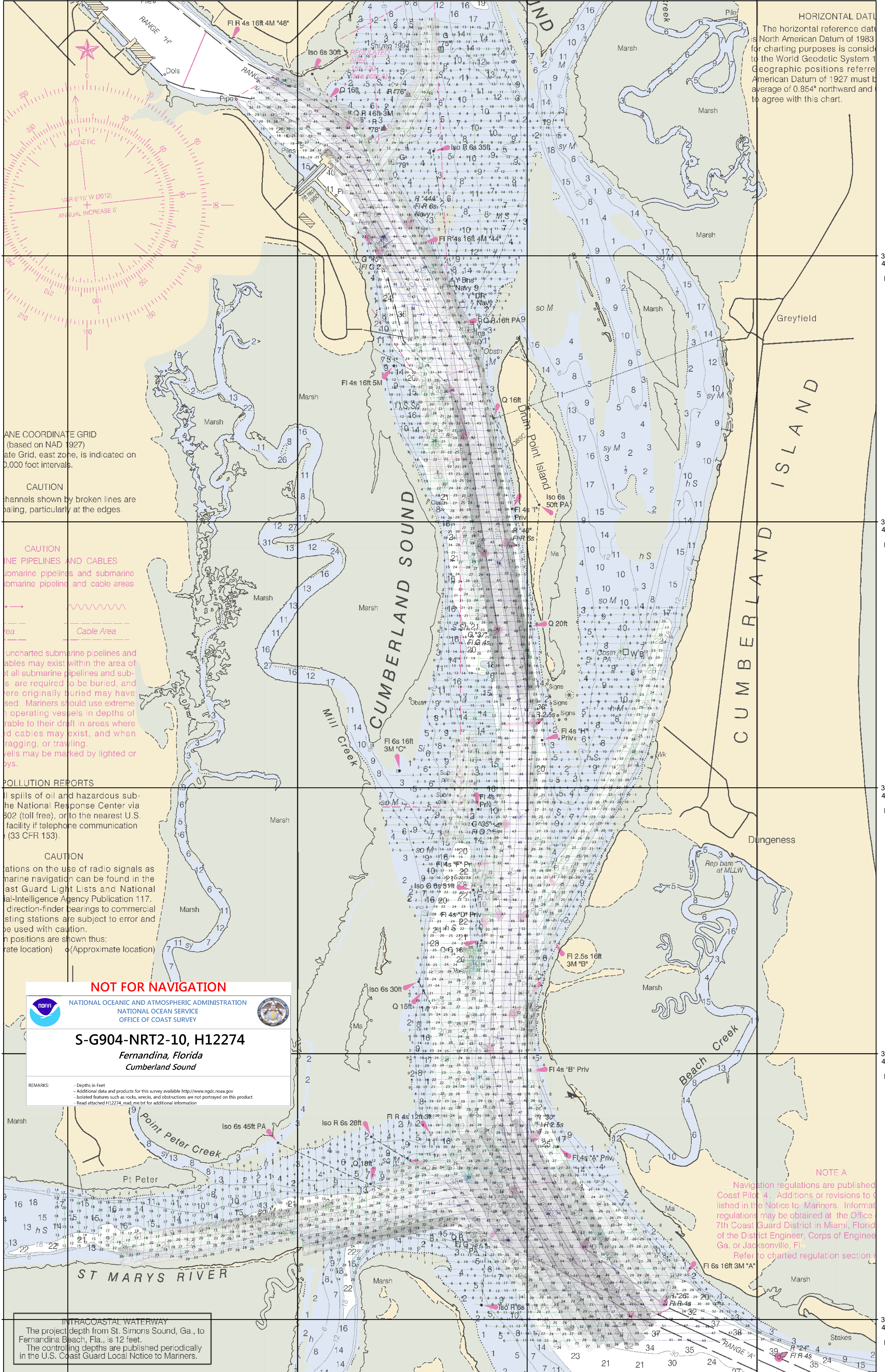


81°31'W 81°30'W 81°29'W 81°28'W

**HORIZONTAL DATUM**  
The horizontal reference datum is North American Datum of 1983 for charting purposes is considered to be the World Geodetic System 1983. Geographic positions referred to the American Datum of 1927 must be corrected by an average of 0.854" northward and 0.224" eastward to agree with this chart.



**PLANE COORDINATE GRID**  
(based on NAD 1927)  
The datum Grid, east zone, is indicated on 1,000 foot intervals.

**CAUTION**  
Channels shown by broken lines are shoaling, particularly at the edges.

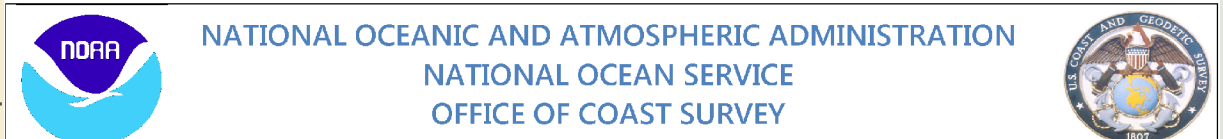
**CAUTION**  
**PIPELINES AND CABLES**  
Submarine pipelines and submarine cable areas

**Uncharted submarine pipelines and cables** may exist within the area of this chart. All submarine pipelines and cables are required to be buried, and where originally buried may have shifted. Mariners should use extreme caution when operating vessels in depths of water shallow to their draft in areas where cables may exist, and when trawling. Vessels may be marked by lighted or buoyed.

**POLLUTION REPORTS**  
In the event of a spill of oil and hazardous substances, call the National Response Center via 1-800-424-9302 (toll free), or to the nearest U.S. Coast Guard facility if telephone communication is not possible (33 CFR 153).

**CAUTION**  
Be cautious on the use of radio signals as marine navigation can be found in the latest Guard Light Lists and National Oceanic and Atmospheric Administration Publication 117. Direction-finder bearings to commercial radio stations are subject to error and should be used with caution. Approximate positions are shown thus:  
● (Approximate location)

**NOT FOR NAVIGATION**



**S-G904-NRT2-10, H12274**

*Fernandina, Florida  
Cumberland Sound*

**REMARKS:**  
- Depths in Feet  
- Additional data and products for this survey available <http://www.ngdc.noaa.gov>  
- Isolated features such as rocks, wrecks, and obstructions are not portrayed on this product  
- Read attached H12274\_read\_me.txt for additional information

**NOTE A**  
Navigation regulations are published in the Coast Pilot 4. Additions or revisions to regulations are published in the Notice to Mariners. Information regarding regulations may be obtained at the Office of the District Engineer, Corps of Engineers, 7th Coast Guard District in Miami, Florida, or Jacksonville, FL. Refer to charted regulation section 10.

**INTRACOASTAL WATERWAY**  
The project depth from St. Simons Sound, Ga., to Fernandina Beach, Fla., is 12 feet. The controlling depths are published periodically in the U.S. Coast Guard Local Notice to Mariners.

81°31'W 81°30'W 81°29'W 81°28'W

30° 47' N  
30° 46' N  
30° 45' N  
30° 44' N  
30° 43' N

30° 47' N  
30° 46' N  
30° 45' N  
30° 44' N  
30° 43' N