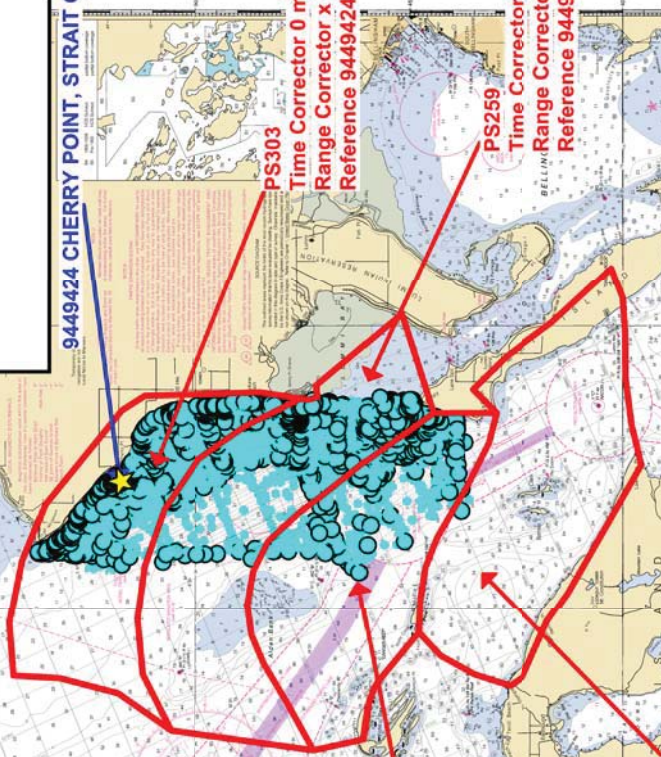


**Final Tidal Zoning for
OPR-N161-RA-2011, H12322
Strait of Georgia, WA**

9449424 CHERRY POINT, STRAIT OF GEORGIA



PS303

**Time Corrector 0 mins
Range Corrector x 0.99
Reference 9449424**

PS259

**Time Corrector 0 mins
Range Corrector x 0.97
Reference 9449424**

PS258

**Time Corrector 0 mins
Range Corrector x 0.95
Reference 9449424**

PS255

**Time Corrector -6 mins
Range Corrector x 0.93
Reference 9449424**