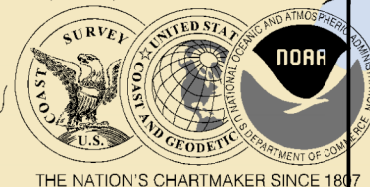


134°45'W

134°42'W

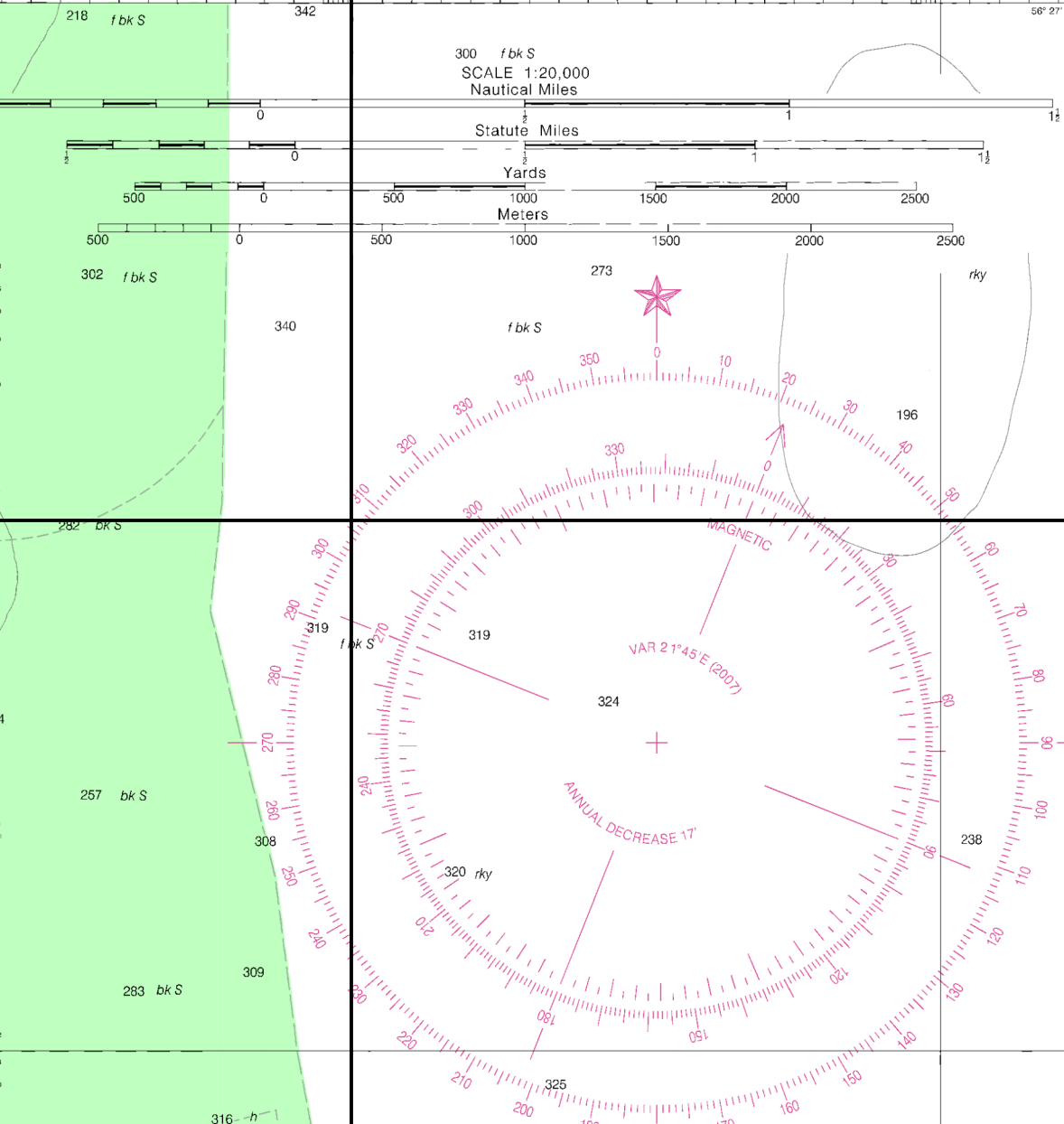
134°39'W

134°36'W



UNITED STATES ALASKA - SOUTHEAST COAST PORTS HERBERT, WALTER, LUCY AND ARMSTRONG CHATHAM STRAIT

Scale 1:20,000 at Lat. 56°23'
North American Datum of 1983
(World Geodetic System 1984)
SOUNDINGS IN FATHOMS
PATHS AND FEET TO ELEVATION PATHS
AT MEAN LOWER LOW WATER
For Symbols and Abbreviations see Chart No. 1
Additional information can be obtained at www.nauticalcharts.noaa.gov



56° 27' N

56° 27' N

56° 24' N

56° 24' N

56° 21' N

56° 21' N

56° 18' N

56° 18' N

HEIGHTS
Elevations of rocks, bridges, landmarks and lights are in feet and refer to Mean High Water. Contour and sounding elevation values are in feet and refer to Mean Low Water.

AUTHORITIES
Hydrography and topography by the National Ocean Service, Coast Survey, with additional data from the Corps of Engineers, and U.S. Coast Guard and Canadian Hydrographic Service.

CAUTION
Temporary changes or defects in aids to navigation are not indicated on this chart. See Local Notice to Mariners.

AIDS TO NAVIGATION
Consult U.S. Coast Guard Light List for supplemental information concerning aids to navigation.

POLLUTION REPORTS
Report all spills of oil and hazardous substances to the National Response Center via 1-800-424-8802, 24 hours a day, or to the nearest U.S. Coast Guard facility. If the nearest communication is impossible (33 CFR 153).

SUPPLEMENTAL INFORMATION
Consult U.S. Coast Pilot 8 for important supplemental information.

RADAR REFLECTORS
Radar reflectors have been placed on many floating aids to navigation. A list of radar reflector symbols and their uses can be found on this chart.

WIRE CHANGED AREAS
The area of red green sea lamp posts (RGLP) and green and red daymarks (RD) for the area shown on this chart.

SOURCE DIAGRAM
The outlined areas represent the limits of the most recent hydrographic survey information that has been used for charting. Survey float data based on this diagram by the U.S. Army Corps of Engineers, and are not shown on this diagram. Refer to Chapter 1, Public Domain, Coast Pilot 8.

NOTE A
Navigation regulations are published in Chapter 2, U.S. Coast Pilot 8. Additions or revisions to Chapter 2 are published in the Notices to Mariners. Information concerning the regulations may be obtained at the Office of the Commander, 17th Coast Guard District in Anchorage, Alaska, or at the Office of the District Engineer, Corps of Engineers in Anchorage, Alaska. Refer to charted regulation section numbers.

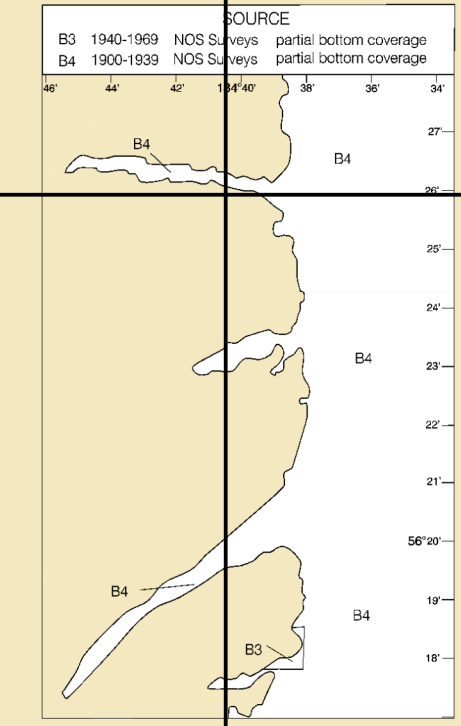
COLREGS, 80-1108 (see note A)
International Regulations for Preventing Collisions at Sea, 1972. The entire area of this chart falls within the COLREGS Demarcation Line.

WARNING
The prudent mariner will not rely solely on any single aid to navigation, particularly on floating aids. See U.S. Coast Guard Light List and U.S. Coast Pilot for details.

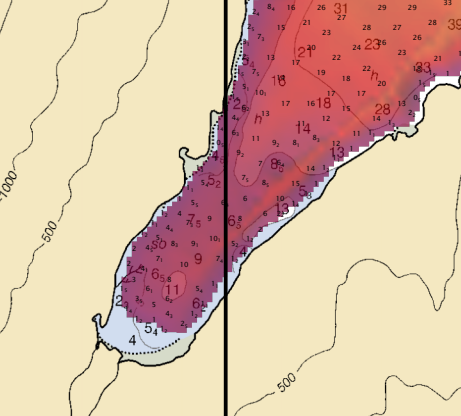
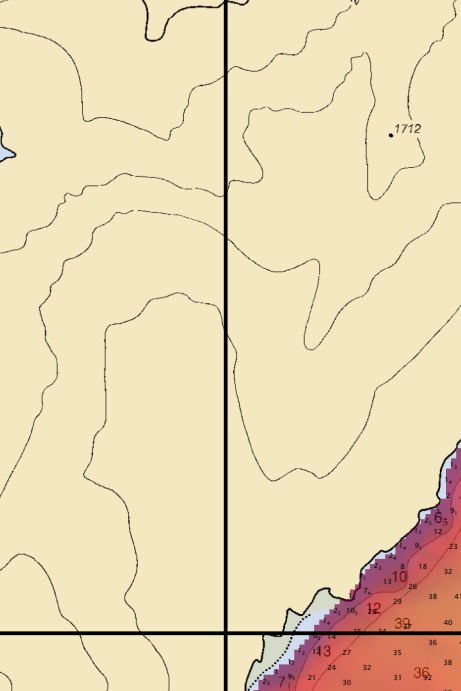
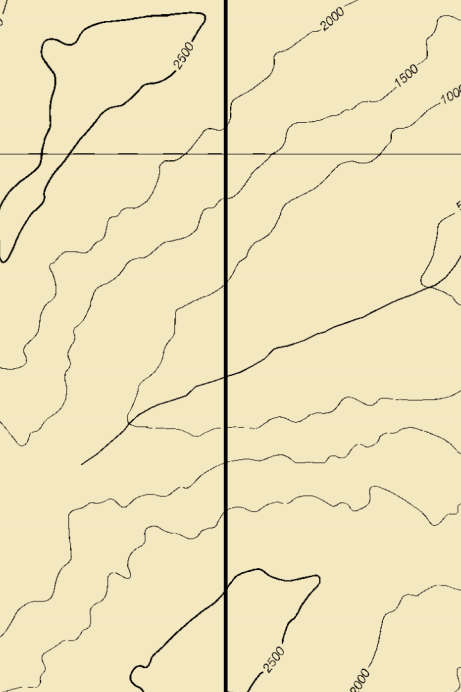
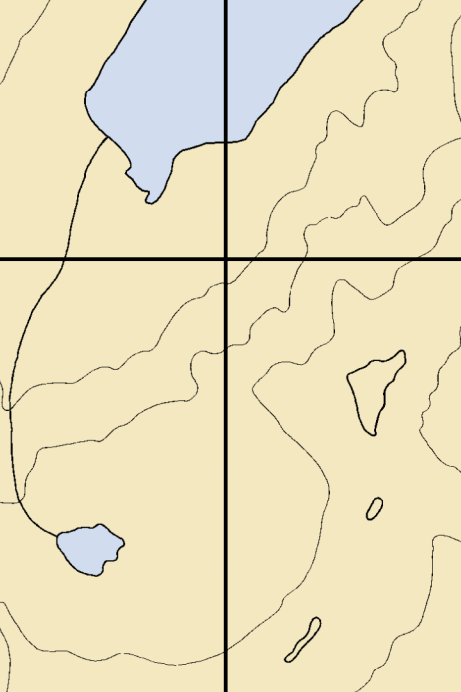
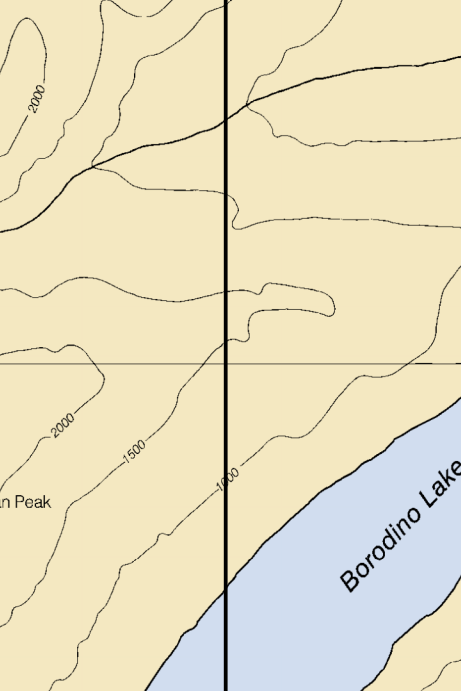
HORIZONTAL DATUM
The horizontal reference datum of this chart is the North American Datum of 1983 (NAD 83), which for charting purposes is considered equivalent to the World Geodetic System 1984 (WGS 84). Sounding positions referred to the North American Datum of 1927 must be corrected an average of 1.327' southward and 0.530' westward to agree with this chart.

NOAA WEATHER RADIO BROADCASTS
The National Weather Service operates listed below continuous weather broadcasts. The reception range is typically 20 to 40 miles from the antenna site, but can be as much as 100 nautical miles for stations at high elevations.

Mt. McArthur, AK KZZ-95 162.525 MHz
Sukwan I., AK KZZ-89 162.425 MHz
Cape Franklin, AK KZZ-98 162.425 MHz



SYMBOL	DESCRIPTION
B3	1940-1999 NGS Sounding
B4	1900-1999 NGS Sounding
B5	1900-1999 NGS Sounding
B6	1900-1999 NGS Sounding
B7	1900-1999 NGS Sounding
B8	1900-1999 NGS Sounding
B9	1900-1999 NGS Sounding
B10	1900-1999 NGS Sounding
B11	1900-1999 NGS Sounding
B12	1900-1999 NGS Sounding
B13	1900-1999 NGS Sounding
B14	1900-1999 NGS Sounding
B15	1900-1999 NGS Sounding
B16	1900-1999 NGS Sounding
B17	1900-1999 NGS Sounding
B18	1900-1999 NGS Sounding
B19	1900-1999 NGS Sounding
B20	1900-1999 NGS Sounding
B21	1900-1999 NGS Sounding
B22	1900-1999 NGS Sounding
B23	1900-1999 NGS Sounding
B24	1900-1999 NGS Sounding
B25	1900-1999 NGS Sounding
B26	1900-1999 NGS Sounding
B27	1900-1999 NGS Sounding
B28	1900-1999 NGS Sounding
B29	1900-1999 NGS Sounding
B30	1900-1999 NGS Sounding
B31	1900-1999 NGS Sounding
B32	1900-1999 NGS Sounding
B33	1900-1999 NGS Sounding
B34	1900-1999 NGS Sounding
B35	1900-1999 NGS Sounding
B36	1900-1999 NGS Sounding
B37	1900-1999 NGS Sounding
B38	1900-1999 NGS Sounding
B39	1900-1999 NGS Sounding
B40	1900-1999 NGS Sounding
B41	1900-1999 NGS Sounding
B42	1900-1999 NGS Sounding
B43	1900-1999 NGS Sounding
B44	1900-1999 NGS Sounding
B45	1900-1999 NGS Sounding
B46	1900-1999 NGS Sounding
B47	1900-1999 NGS Sounding
B48	1900-1999 NGS Sounding
B49	1900-1999 NGS Sounding
B50	1900-1999 NGS Sounding



134°45'W

134°42'W

134°39'W

134°36'W

NOT FOR NAVIGATION

NATIONAL OCEANIC AND ATMOSPHERIC ADMINISTRATION
NATIONAL OCEAN SERVICE
OFFICE OF COAST SURVEY

OPR-O322-FA-11, H12371
Chatham Strait, Alaska
Port Herbert to Port Lucy

REMARKS:
- Depths in fathoms
- Additional data and products for this survey available <http://www.ngdc.noaa.gov>
- Isolated features such as rocks, wrecks, and obstructions are not portrayed on this product
- Read attached H12371_read_me.txt for additional information