

AN-C  
EXPLANATION

100KH  
99,600 Microsecond  
SONORS: (Not individual static

dry  
dry  
dry  
dry

NOTE E  
TRAFFIC SEPARATION SCHEME  
One-way traffic lanes overlprinted on this chart are RECOMMENDED for use by all vessels traveling between the points involved. They have been

NOTE G  
PRECAUTIONARY AREAS  
Traffic within the Precautionary Areas may consist of vessels making the transition between operating in Ambrose or Sandy Hook Channel and one of the established Naragansett, Buzzards Bay and Buzzards Bay and are advised to exercise extreme care in

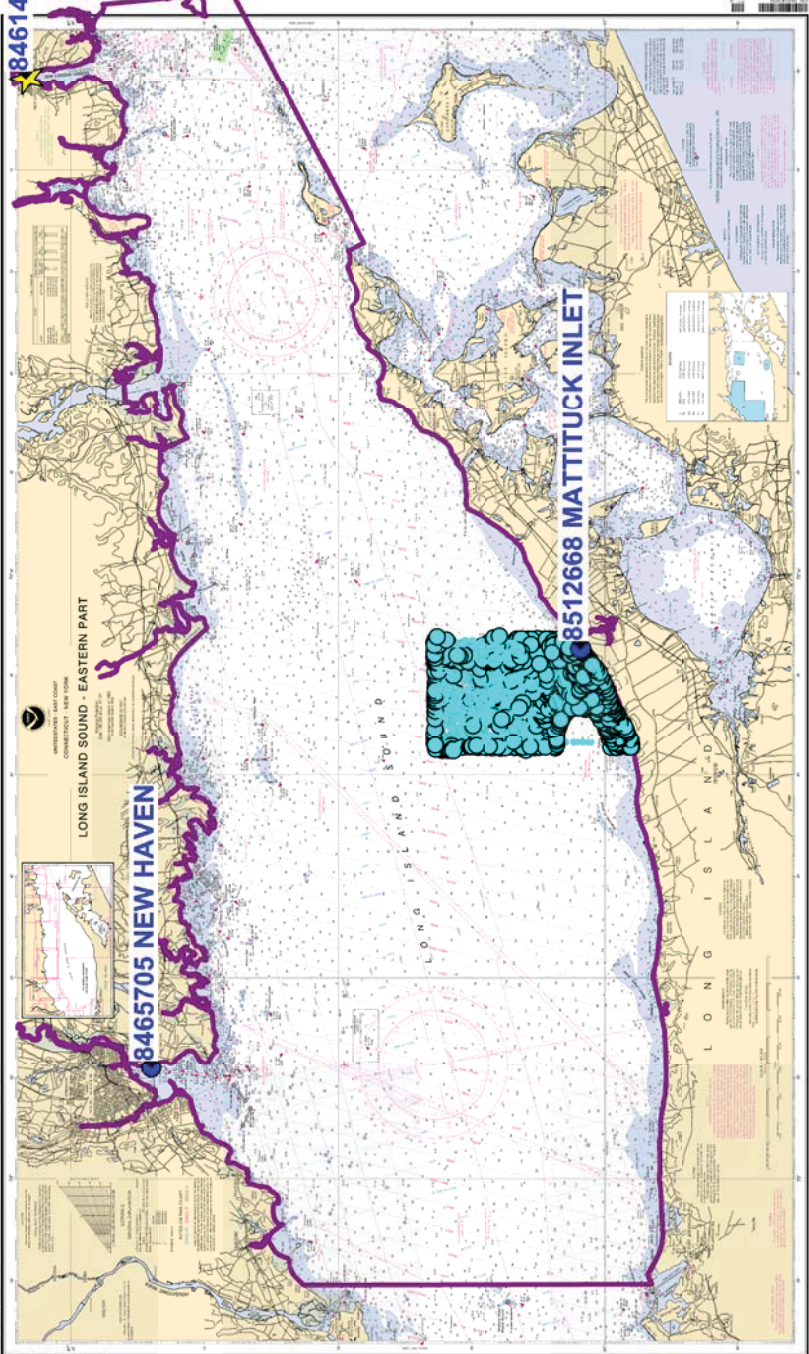
# Final TCARI Grid for OPR-B370-TJ-2013, H12482 Jacobs Pt to Mattituck Inlet, Long Island Sound

POLLUTION REPORTS  
Report all spills of oil and hazardous substances to the National Response Center via 1-800-424-8802 (toll free), or to the nearest U.S. Coast Guard facility if telephone communication

NOTE F  
TERRAIN RANGE

SOUNDINGS IN FEET

LONG ISLAND SOUND - EASTERN PART  
UNIVERSITY MAP CENTER  
CONNECTICUT NEW YORK



12354  
UNIVERSITY MAP CENTER  
CONNECTICUT NEW YORK  
SOUNDINGS IN FEET  
REGULATED NAVIGATION AREA  
185.152 (see note A)  
185.153 (see note A)  
185.154 (see note A)  
185.155 (see note A)