

73° 50' 20' 30' 40' 50' 72° 10' 20' 30' 40' 50'

100KH
100 Microsecond
of individual stati

NOTE E
TRAFFIC SEPARATION SCHEME
One-way traffic lanes overprinted on this chart are RECOMMENDED for use by all vessels traveling between the points involved. They have been

NOTE G
PRECAUTIONARY AREAS
Traffic within the Precautionary Areas may consist of vessels making the transition between operating in Ambrose or Sandy Hook Channels and one of the established

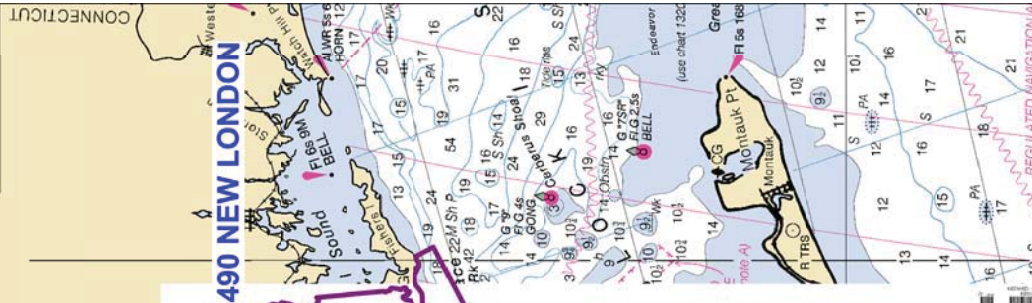
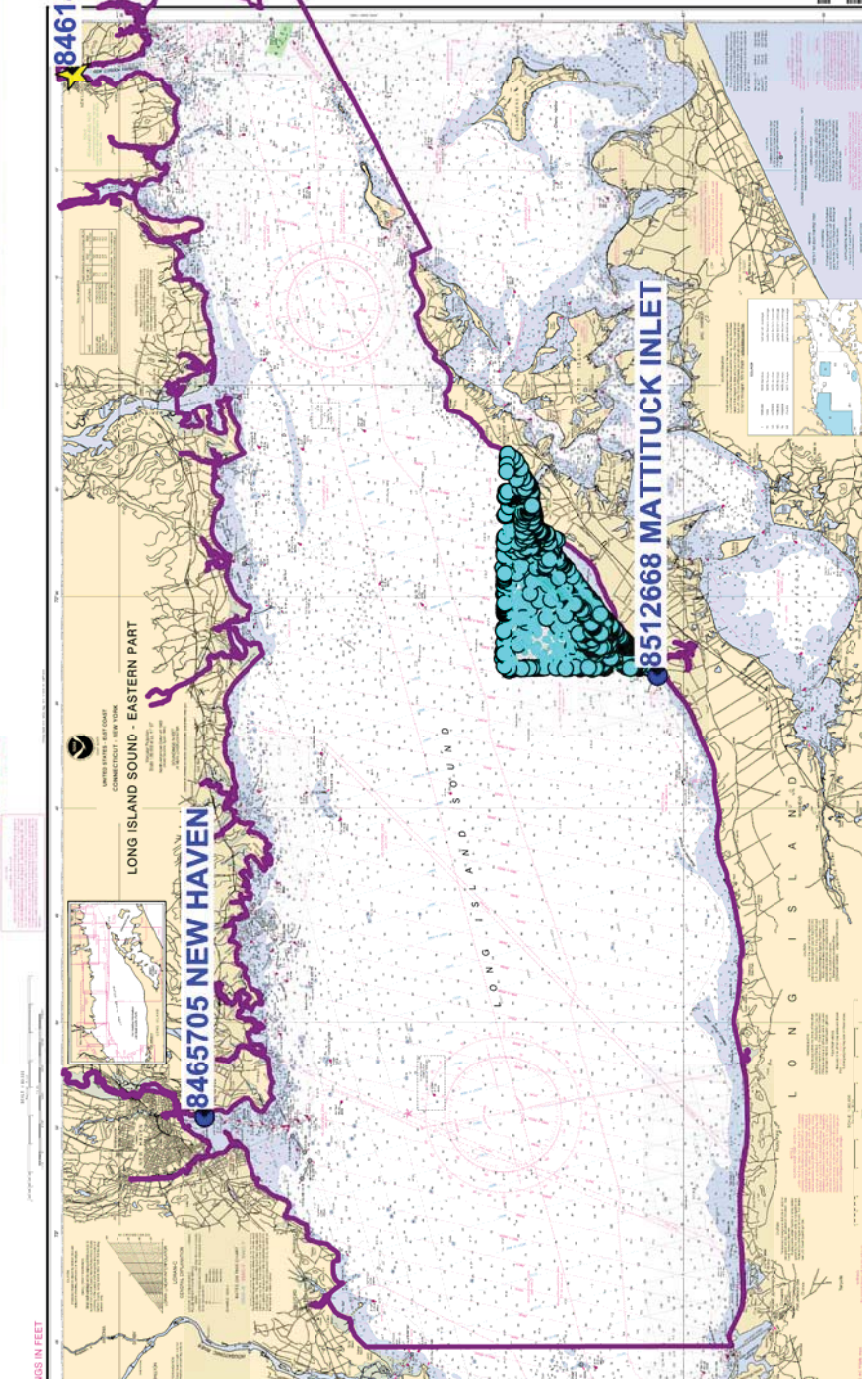
Final TCARI Grid for OPR-B370-TJ-2013, H12483

Mattituck Inlet to Greenport, Long Island Sound

Scale

POLLUTION REPORTS
Report all spills of oil and hazardous substances to the National Response Center via 1-800-424-8802 (toll free), or to the nearest J.S. Coast Guard facility if telephone communication

NOTE F
TORPEDO RANGE



REGULATED NAUTICAL