

FINAL TIDE NOTE and FINAL TIDE ZONING CHART

DATE: February 2015

HYDROGRAPHIC BRANCH: Atlantic
HYDROGRAPHIC PROJECT: OPR-K354-KR-13
HYDROGRAPHIC SHEET: H12555

LOCALITY: 20 NM SW of Ship Shoal

TIME PERIOD: March 2, 2014 – February 7, 2015

TIDE STATION USED: 8764227 LAWMA, Amerada Pass, LA
Lat. 29° 27.0' N Lon. 91° 20.3' W

PLANE OF REFERENCE (MEAN LOWER LOW WATER): 0.00 m
HEIGHT OF HIGH WATER ABOVE PLANE OF REFERENCE: 0.999 m

REMARKS: RECOMMENDED ZONING
Use zones identified as: WGM263 and WGM264

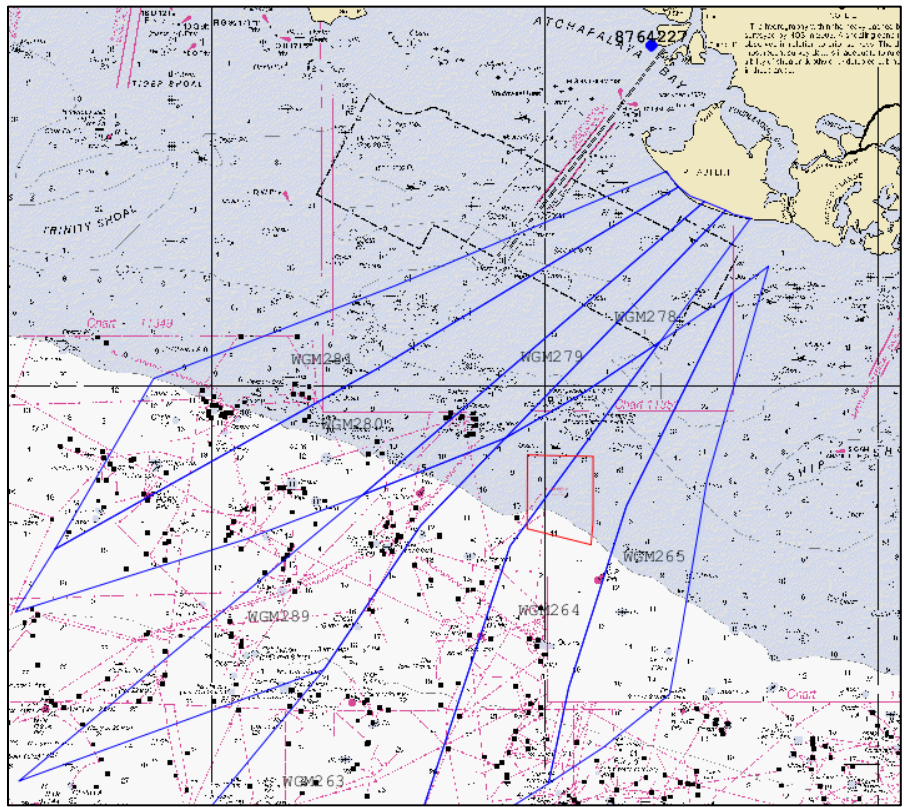


Figure 1. Final Tidal Zoning Chart

Note 1: Provided time series data are six minute time series data in meters, relative to MLLW and Greenwich Mean Time (GMT).

Note 2: For final processing, tidal zoning correctors were applied to verified observed data, acquired from the NOAA Tides and Currents website.