

118°12'W

118°09'W

118°06'W

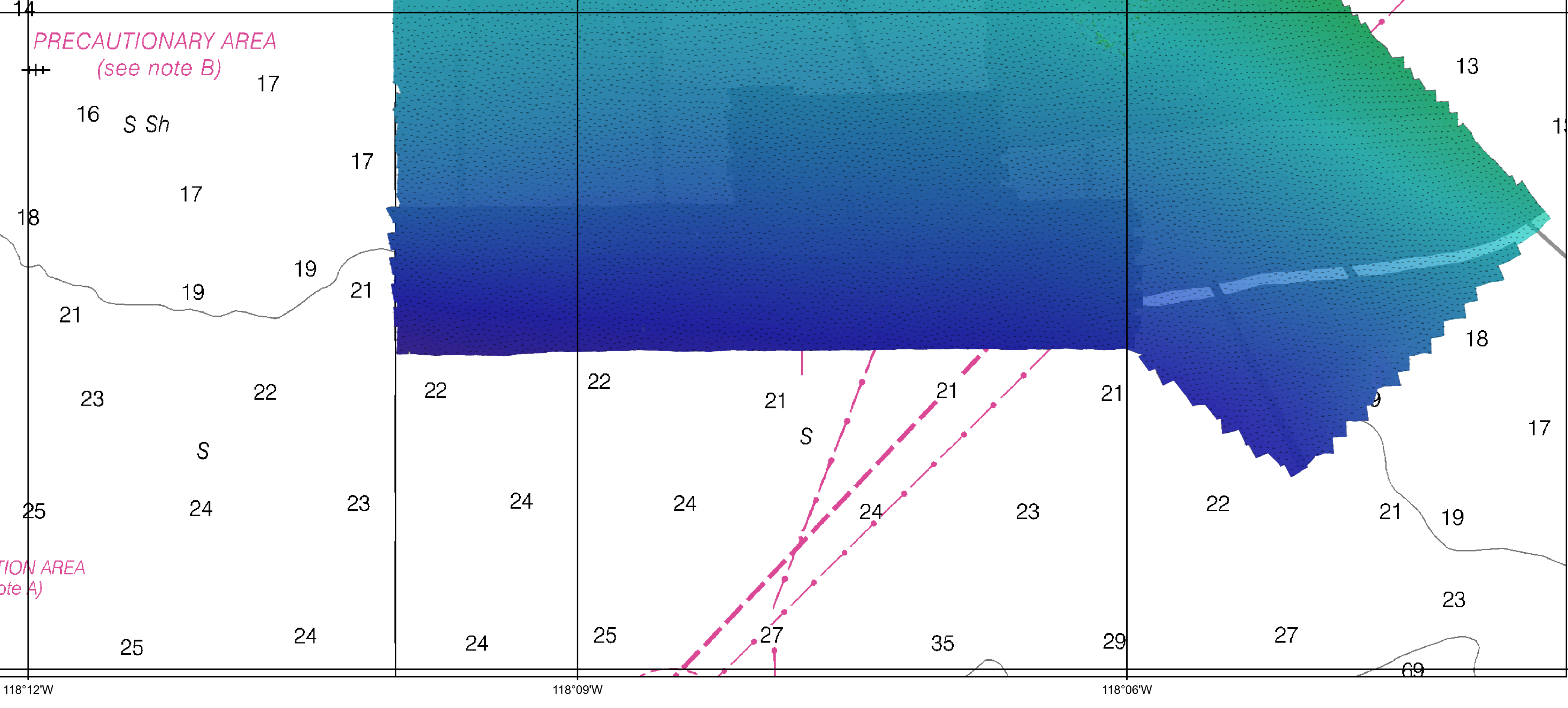
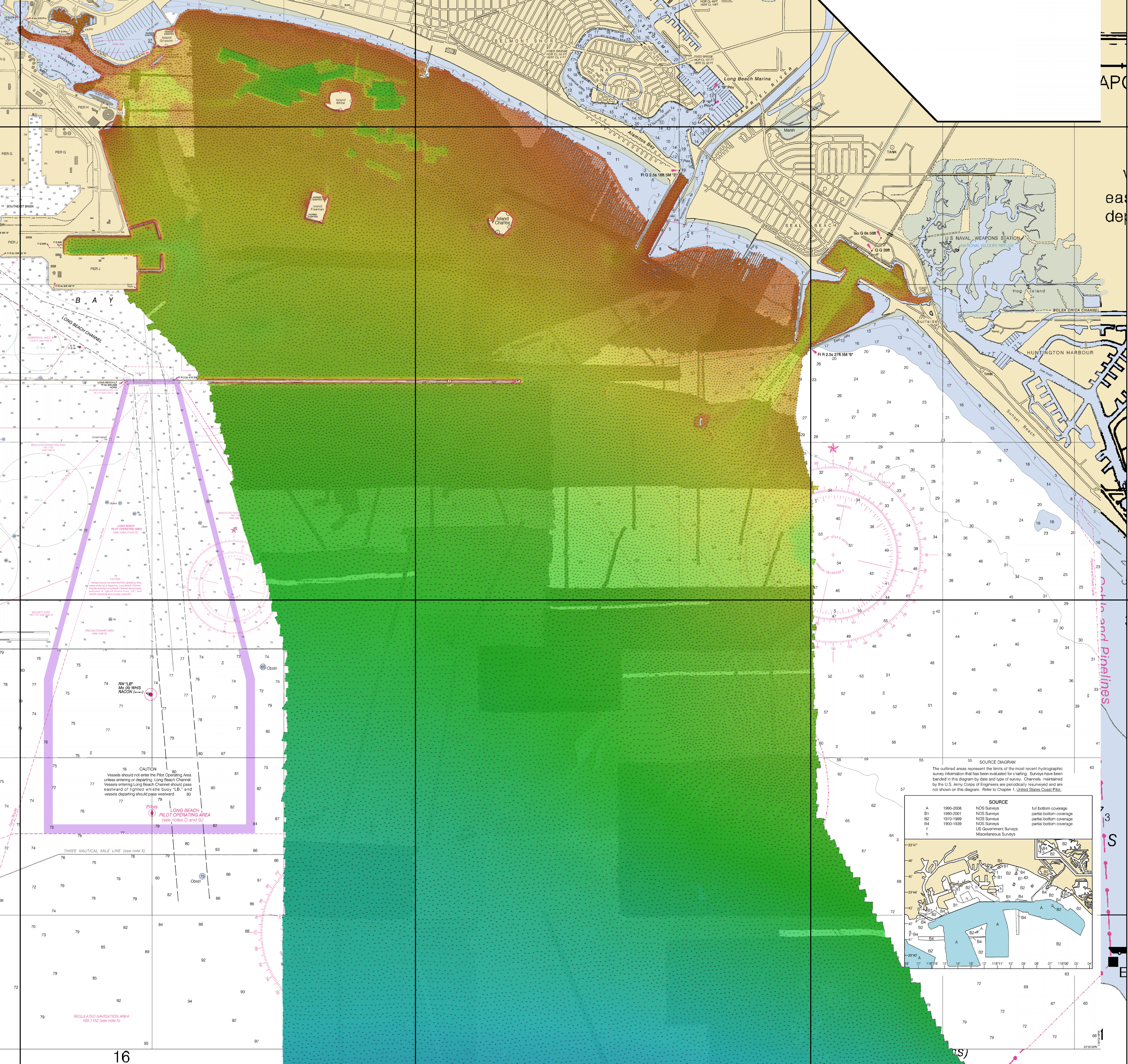
118°12'W 118°09'W 118°06'W

NOT FOR NAVIGATION

NATIONAL OCEANIC AND ATMOSPHERIC ADMINISTRATION
NATIONAL OCEAN SERVICE
OFFICE OF COAST SURVEY

OPR-L318-FA-13, H12618
Long Beach, CA
Long Beach and Vicinity

REMARKS:
- Depths in Feet
- Additional data and products for this survey available <http://www.ngdc.noaa.gov>
- Isolated features such as rocks, wrecks, and obstructions are not portrayed on this product
- Read attached H12618_read_text for additional information



CAUTION

Vessels should not enter the Pilot Operating Area unless entering or departing Long Beach Channel. Vessels entering Long Beach Channel should pass eastward of lighted whistle buoy "S", and vessels departing should pass westward.

LONG BEACH PILOT OPERATING AREA (see notes A and B)

THREE NAUTICAL MILE LINE (see note X)

REGULATED NAVIGATION AREA (see note A)

SOURCE DIAGRAM

The outlined areas represent the limits of the most recent hydrographic survey information that has been evaluated for entry. Surveys have been banded in this diagram by date and type of survey. Channels maintained by the U.S. Army Corps of Engineers are periodically resurveyed and are not shown on this diagram. Refer to Chapter 1, United States Coast Pilot.

SOURCE	DATE	COVERAGE
A	1990-2008	NOS Surveys
B1	1990-2001	NOS Surveys
B2	1970-1989	NOS Surveys
B4	1900-1939	NOS Surveys
I		US Government Surveys
M		Miscellaneous Surveys

Legend:
 A: full bottom coverage
 B1: partial bottom coverage
 B2: partial bottom coverage
 B4: partial bottom coverage
 I: US Government Surveys
 M: Miscellaneous Surveys