

FINAL TIDE NOTE and FINAL TIDE ZONING CHART

DATE: July 2015

HYDROGRAPHIC BRANCH: Atlantic

HYDROGRAPHIC PROJECT: OPR-K339-KR-14

HYDROGRAPHIC SHEET: H12636

LOCALITY: 7 NM East of Southwest Pass

TIME PERIOD: July 16, 2014 – April 30, 2015

TIDE STATION USED: 8760922 Pilot Station East, Southwest Pass, LA
Lat. 28° 55.9' N Lon. 89° 24.5 W

PLANE OF REFERENCE (MEAN LOWER LOW WATER): 0.00 m
HEIGHT OF HIGH WATER ABOVE PLANE OF REFERENCE: 0.875 m

REMARKS: RECOMMENDED ZONING

Use zones identified as: CGM699 and CGM698

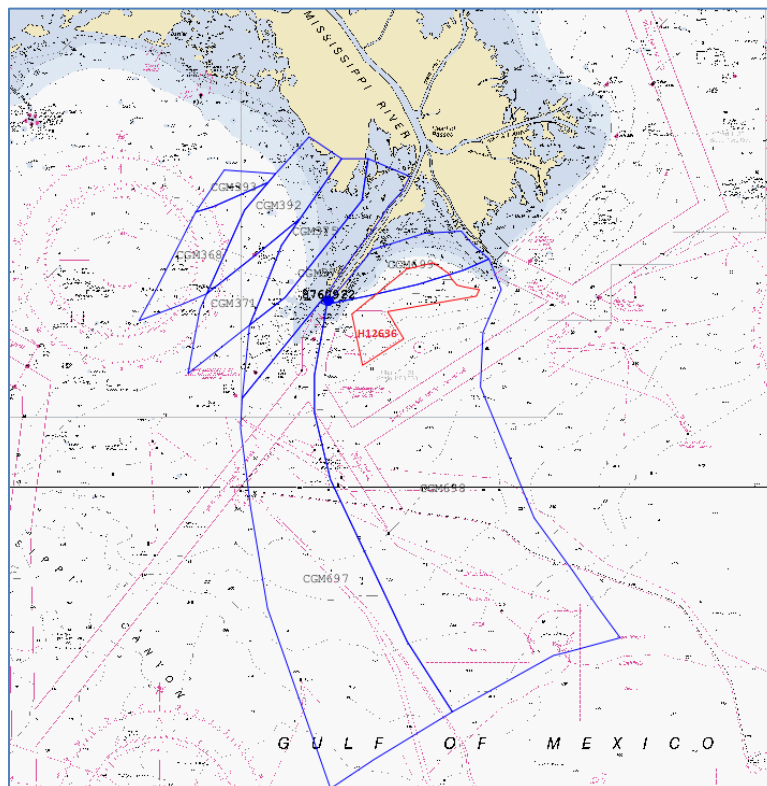


Figure 1. Final Tidal Zoning Chart

Note 1: Provided time series data are six minute time series data in meters, relative to MLLW and Greenwich Mean Time (GMT).

Note 2: For final processing, tidal zoning correctors were applied to verified observed data, acquired from the NOAA Tides and Currents website.