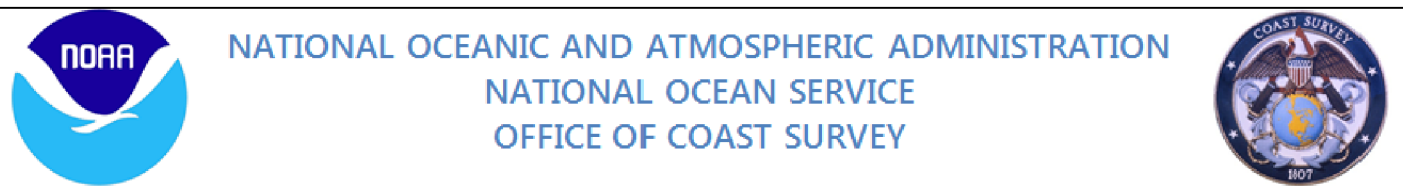


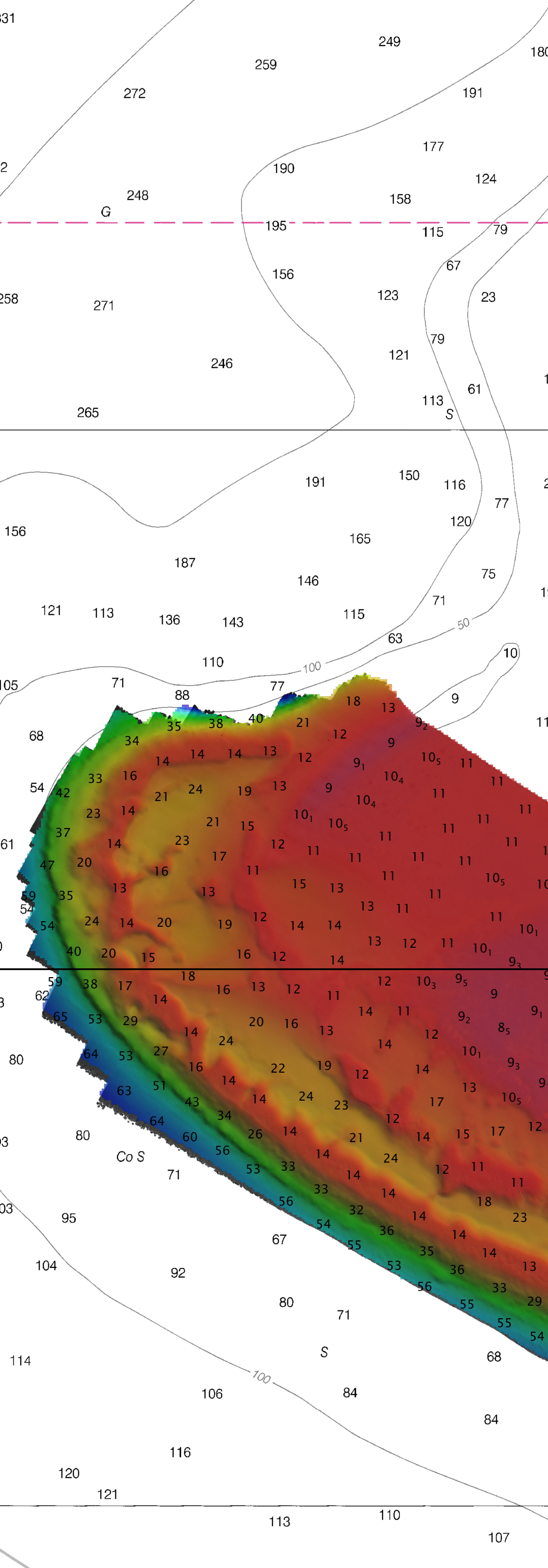
NOT FOR NAVIGATION



M-I907-NF-14, H12640
Caribbean Sea, US Virgin Islands
Southwest Shoal, St. Croix

REMARKS:
- Depths in Fathoms
- Additional data and products for this survey available <http://www.ngdc.noaa.gov>
- Isolated features such as rocks, wrecks, and obstructions are not portrayed on this product
- Read attached H12640_read_me.txt for additional information

POLLUTION REPORTS
Report all spills of oil and hazardous substances to the National Response Center via 1-800-424-8802 (toll free), or to the nearest U.S. Coast Guard facility if telephone communication is impossible (33 CFR 153).



RESTRICTED AREA
334.1490
(see note A)

Sandy Point

Southwest Cape

Westend

Concordia

Hope and Carlton Land

Long Point Bay

Long Pt

Southwest Shoal

MARINE CONSERVATION DISTRICT
(fisheries prohibited area-seasonal: 50 CFR 622.33; see note A)

