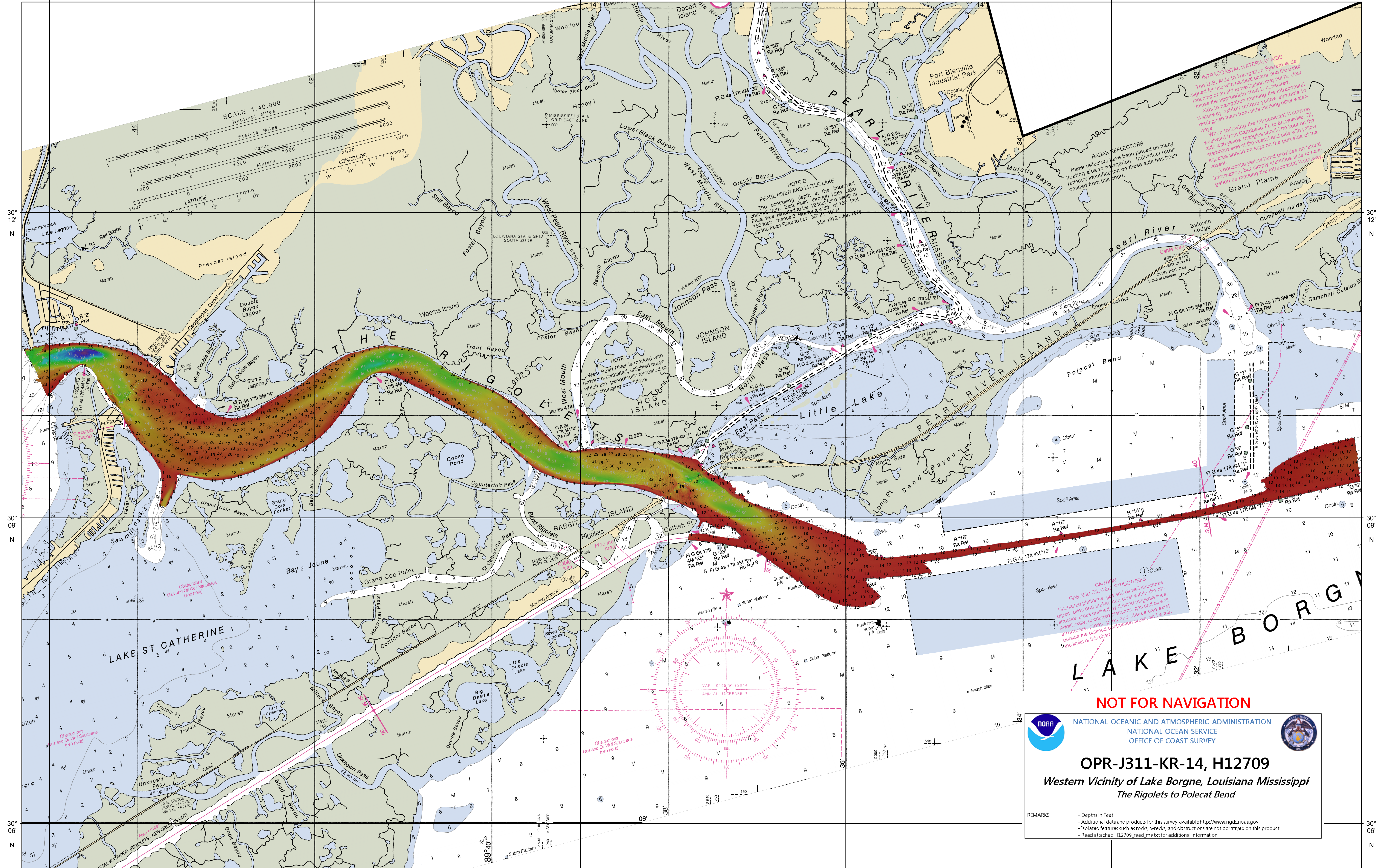


89°45'W 89°42'W 89°39'W 89°36'W 89°33'W



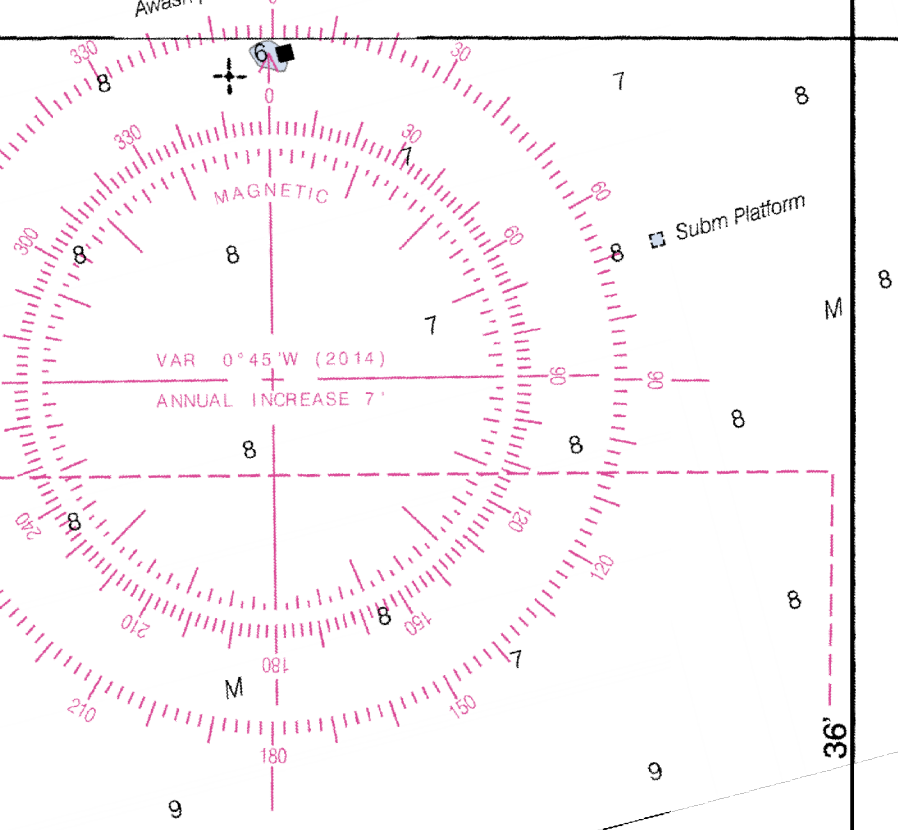
**INTRACOASTAL WATERWAY AIDS**  
The U.S. Aids to Navigation System is designed for use with nautical charts, and the exact meaning of an aid to navigation may not be clear unless the appropriate chart is consulted.  
Aids to navigation marking the Intracoastal Waterway exhibit unique yellow water-distinguishing them from aids marking other waterways.  
When following the Intracoastal Waterway westward from Carrabelle, FL to Brownsville, TX, westward from Carrabelle, FL to Brownsville, TX, aids with yellow triangles should be kept on the starboard side of the vessel and aids with yellow squares should be kept on the port side of the vessel.  
A horizontal yellow band provides no lateral information, but simply identifies aids to navigation as marking the Intracoastal Waterway.

**RADAR REFLECTORS**  
Radar reflectors have been placed on many floating aids to navigation. Individual radar reflector identification on these aids has been omitted from this chart.

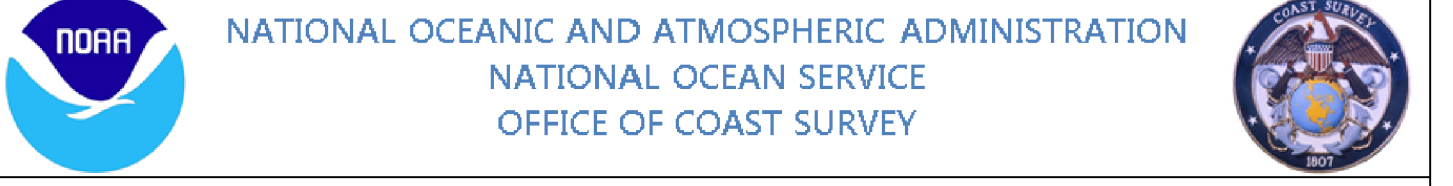
**NOTE D**  
PEARL RIVER AND LITTLE LAKE  
The controlling depth in the improved locks from East Pass through Little Lake Pass was reported to be 12 feet for a width of 150 feet. Hence 3 feet for a width of 150 feet up the Pearl River to Lat. 30° 21' 44" N. Mar 1972 - Jan 1976.

**NOTE G**  
West Pearl River is marked with numerous uncharted, unlighted buoys which are periodically relocated to meet changing conditions.

**CAUTION**  
GAS AND OIL WELL STRUCTURES  
Uncharted platforms, gas and oil well structures, pipes, piles and stakes can exist within the obstruction areas outlined by dashed magenta lines. Additionally, uncharted structures, pipes, piles and stakes can exist outside the outlined obstruction areas, and within the limits of this chart.



**NOT FOR NAVIGATION**



**OPR-J311-KR-14, H12709**  
*Western Vicinity of Lake Borgne, Louisiana Mississippi*  
*The Rigolets to Polecat Bend*

**REMARKS:**  
- Depths in Feet  
- Additional data and products for this survey available <http://www.ngdc.noaa.gov>  
- Isolated features such as rocks, wrecks, and obstructions are not portrayed on this product  
- Read attached H12709\_read\_me.txt for additional information

89°45'W 89°42'W 89°39'W 89°36'W 89°33'W

30° 06' N

30° 06' N

30° 09' N

30° 09' N

30° 12' N

30° 12' N