

164°06'W 164°03'W 164°W 163°57'W 163°54'W 163°51'W 163°48'W 163°45'W 163°42'W 163°39'W 163°36'W 163°33'W 163°30'W 163°27'W 163°24'W 163°21'W 163°18'W 163°15'W 163°12'W 163°09'W 163°06'W 163°03'W 163°W

NOT FOR NAVIGATION



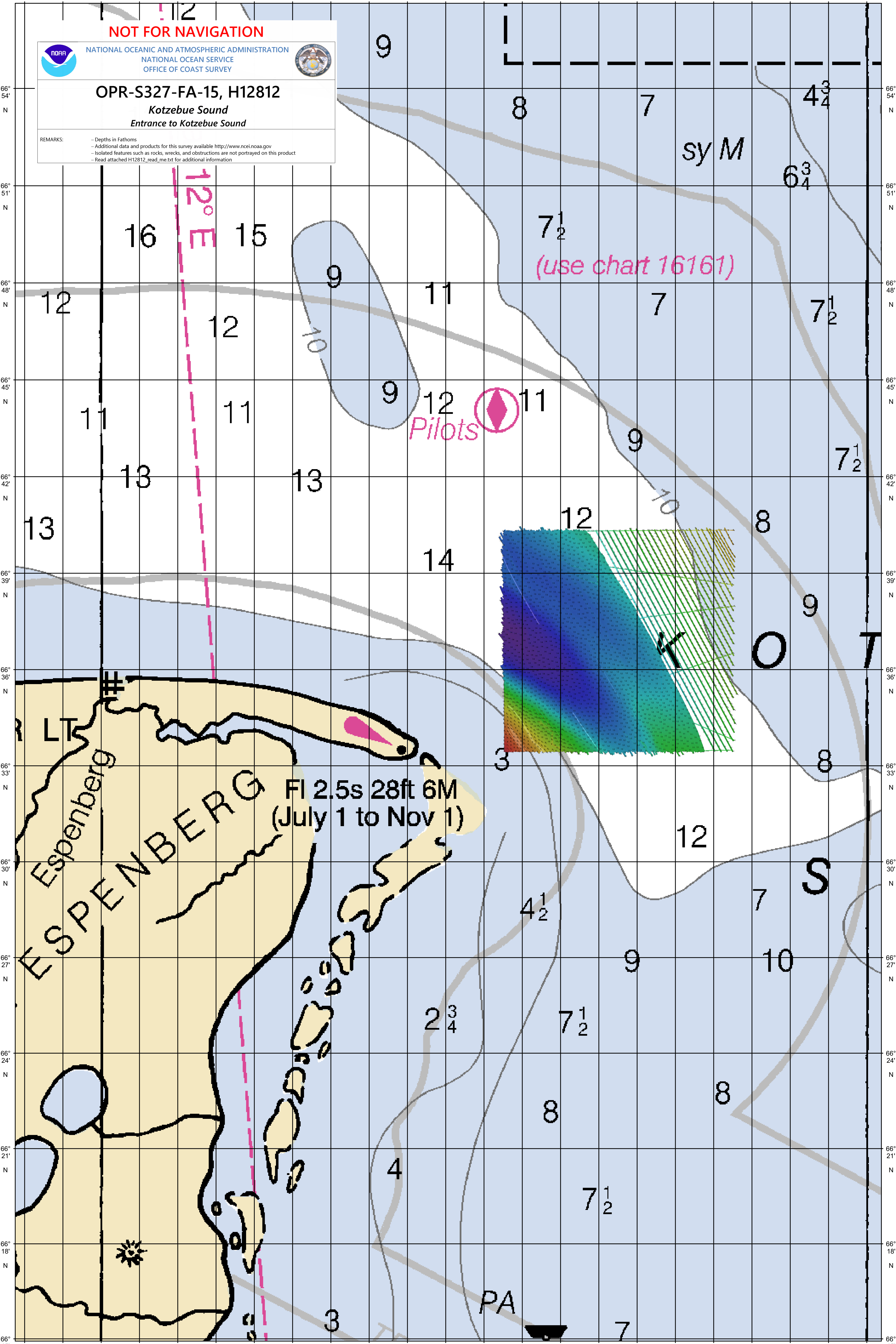
NATIONAL OCEANIC AND ATMOSPHERIC ADMINISTRATION
NATIONAL OCEAN SERVICE
OFFICE OF COAST SURVEY



OPR-S327-FA-15, H12812

Kotzebue Sound
Entrance to Kotzebue Sound

REMARKS:
- Depths in Fathoms
- Additional data and products for this survey available <http://www.ncei.noaa.gov>
- Isolated features such as rocks, wrecks, and obstructions are not portrayed on this product
- Read attached H12812_read_me.txt for additional information



sym

(use chart 16161)

Pilots

FI 2.5s 28ft 6M
(July 1 to Nov 1)

ESPENBERG

PA

164°06'W 164°03'W 164°W 163°57'W 163°54'W 163°51'W 163°48'W 163°45'W 163°42'W 163°39'W 163°36'W 163°33'W 163°30'W 163°27'W 163°24'W 163°21'W 163°18'W 163°15'W 163°12'W 163°09'W 163°06'W 163°03'W 163°W