

164°39'W 164°36'W 164°33'W 164°30'W 164°27'W 164°24'W 164°21'W 164°18'W 164°15'W 164°12'W 164°09'W 164°06'W 164°03'W 164°W 163°57'W 163°54'W 163°51'W 163°48'W 163°45'W 163°42'W 163°39'W 163°36'W 163°33'W 163°30'W

**NOT FOR NAVIGATION**



NATIONAL OCEANIC AND ATMOSPHERIC ADMINISTRATION  
NATIONAL OCEAN SERVICE  
OFFICE OF COAST SURVEY



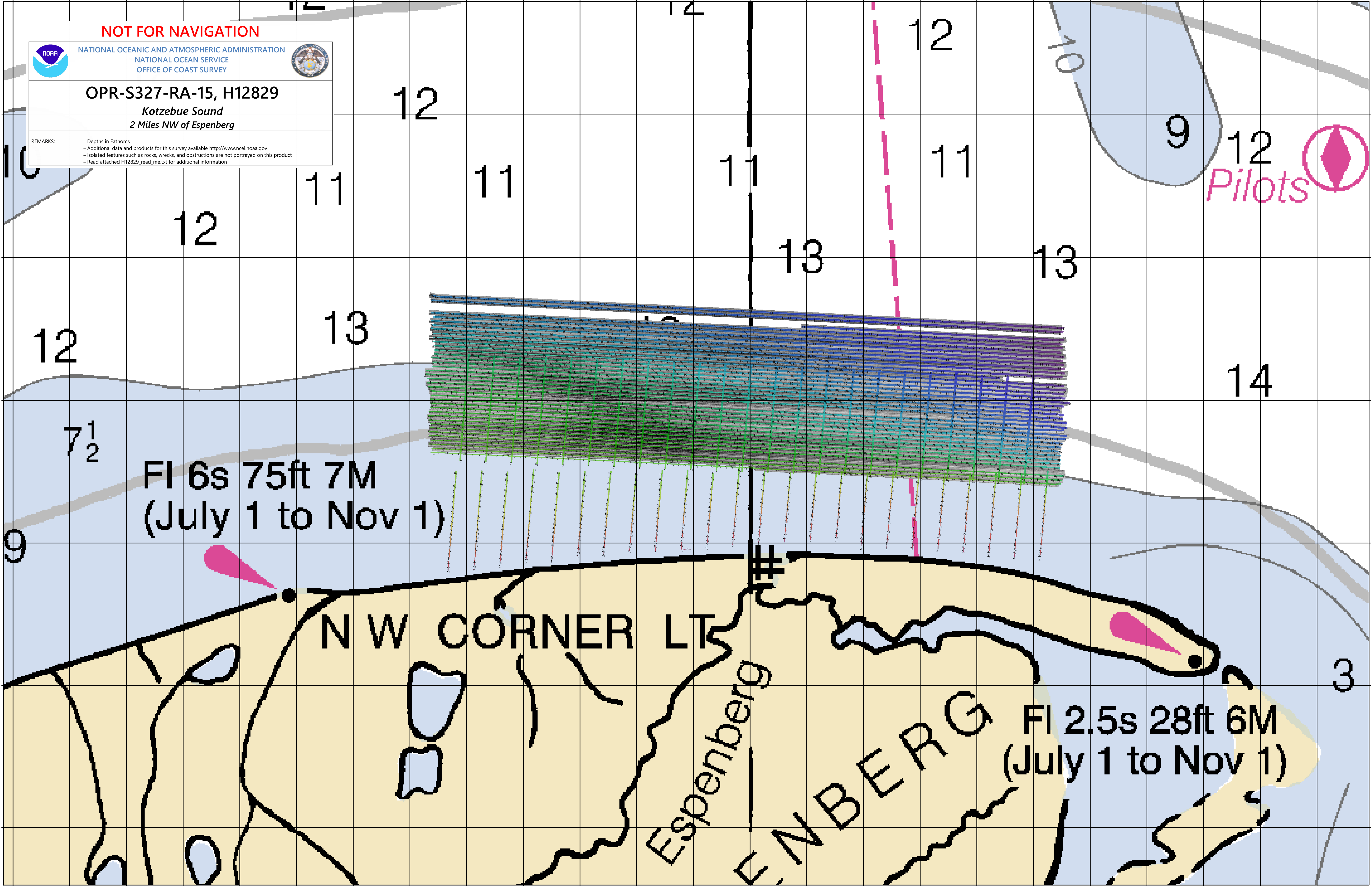
**OPR-S327-RA-15, H12829**

*Kotzebue Sound*  
2 Miles NW of Espenberg

REMARKS:  
- Depths in Fathoms  
- Additional data and products for this survey available <http://www.ncei.noaa.gov>  
- Isolated features such as rocks, wrecks, and obstructions are not portrayed on this product  
- Read attached H12829\_read\_me.txt for additional information

66° 45' N  
66° 42' N  
66° 39' N  
66° 36' N  
66° 33' N  
66° 30' N

66° 45' N  
66° 42' N  
66° 39' N  
66° 36' N  
66° 33' N  
66° 30' N



FI 6s 75ft 7M  
(July 1 to Nov 1)

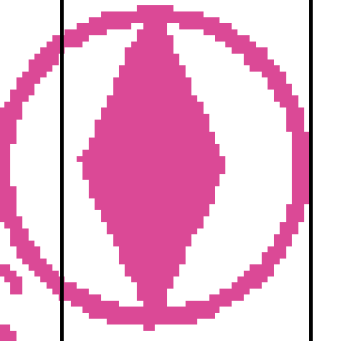
N W CORNER LT

Espenberg

ESPERBERG

FI 2.5s 28ft 6M  
(July 1 to Nov 1)

Pilots



164°39'W 164°36'W 164°33'W 164°30'W 164°27'W 164°24'W 164°21'W 164°18'W 164°15'W 164°12'W 164°09'W 164°06'W 164°03'W 164°W 163°57'W 163°54'W 163°51'W 163°48'W 163°45'W 163°42'W 163°39'W 163°36'W 163°33'W 163°30'W