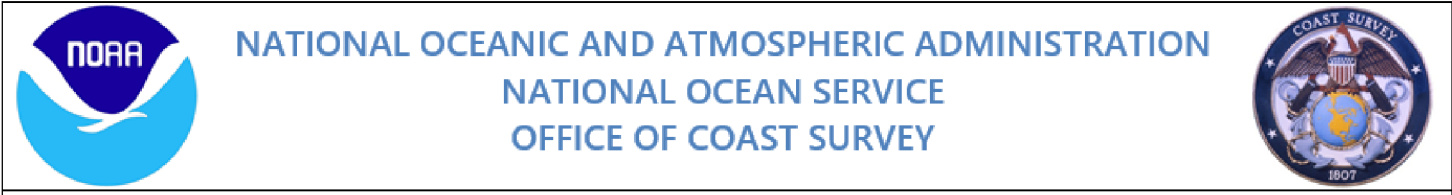


69°18'W 69°15'W 69°12'W 69°09'W 69°06'W 69°03'W 69°W 68°57'W

44° 03' N  
44° N  
43° 57' N  
43° 54' N

44° 03' N  
44° N  
43° 57' N  
43° 54' N

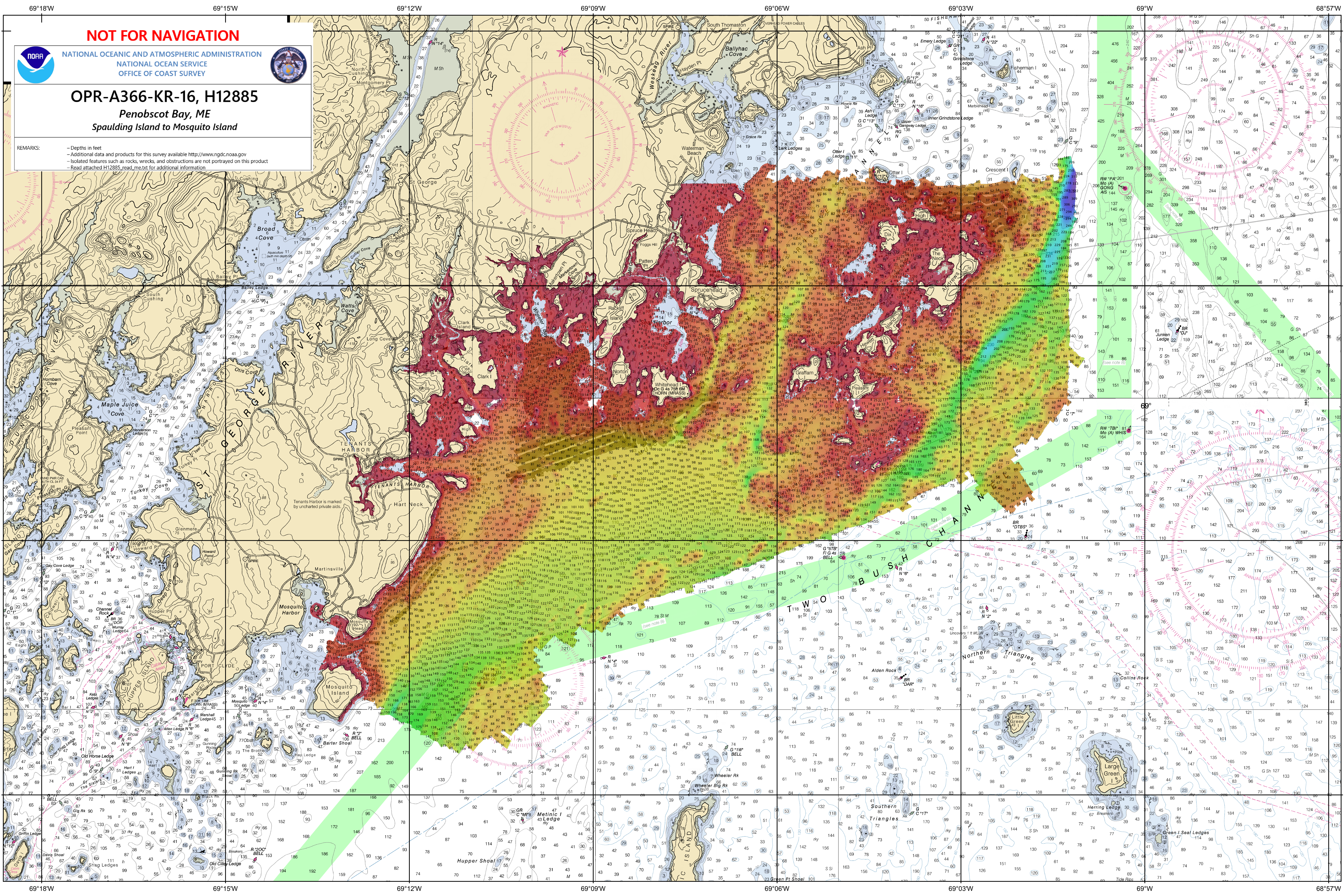
**NOT FOR NAVIGATION**



**OPR-A366-KR-16, H12885**

*Penobscot Bay, ME*  
*Spaulding Island to Mosquito Island*

REMARKS:  
- Depths in feet  
- Additional data and products for this survey available <http://www.ngdc.noaa.gov>  
- Isolated features such as rocks, wrecks, and obstructions are not portrayed on this product  
- Read attached H12885\_read\_mxtxt for additional information



69°18'W 69°15'W 69°12'W 69°09'W 69°06'W 69°03'W 69°W 68°57'W