

77°42'W 77°39'W 77°36'W 77°33'W 77°30'W

33°30'N

33°27'N

33°24'N

33°21'N

33°18'N

33°15'N

AS "410
Y 20s

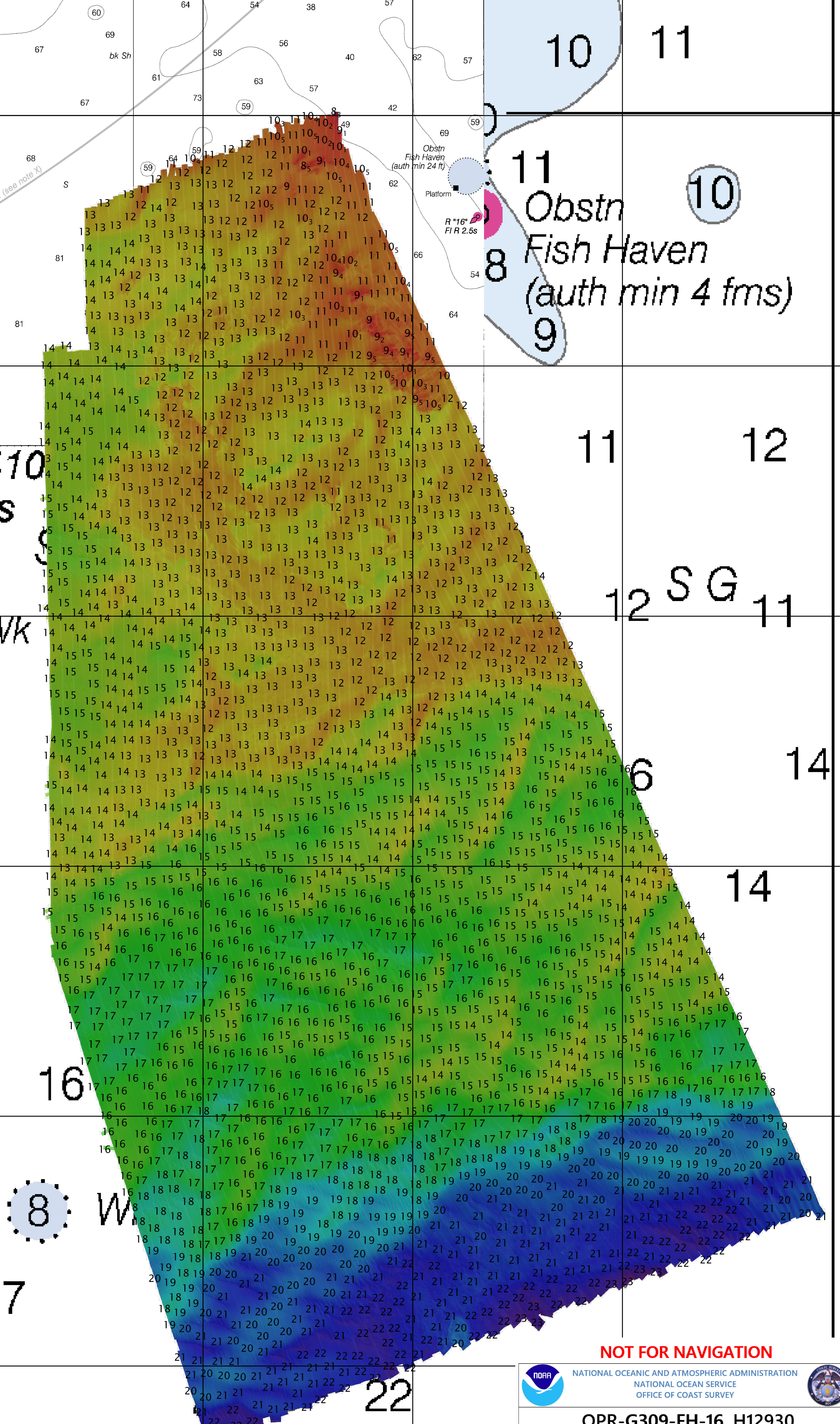
11

16



16

17

19



NOT FOR NAVIGATION

 NATIONAL OCEANIC AND ATMOSPHERIC ADMINISTRATION
 NATIONAL OCEAN SERVICE
 OFFICE OF COAST SURVEY

OPR-G309-FH-16, H12930
Approaches to Wilmington, NC
South Frying Pan Shoal

REMARKS: -Depths in Fathoms
 -Additional data and products for this survey available <https://www.ncei.noaa.gov>
 -Isolated features such as rocks, wrecks, and obstructions are not portrayed on this product
 -Read attached H12930_read_me.txt for additional information

77°42'W 77°39'W 77°36'W 77°33'W 77°30'W