

NOT FOR NAVIGATION



NATIONAL OCEANIC AND ATMOSPHERIC ADMINISTRATION
NATIONAL OCEAN SERVICE
OFFICE OF COAST SURVEY

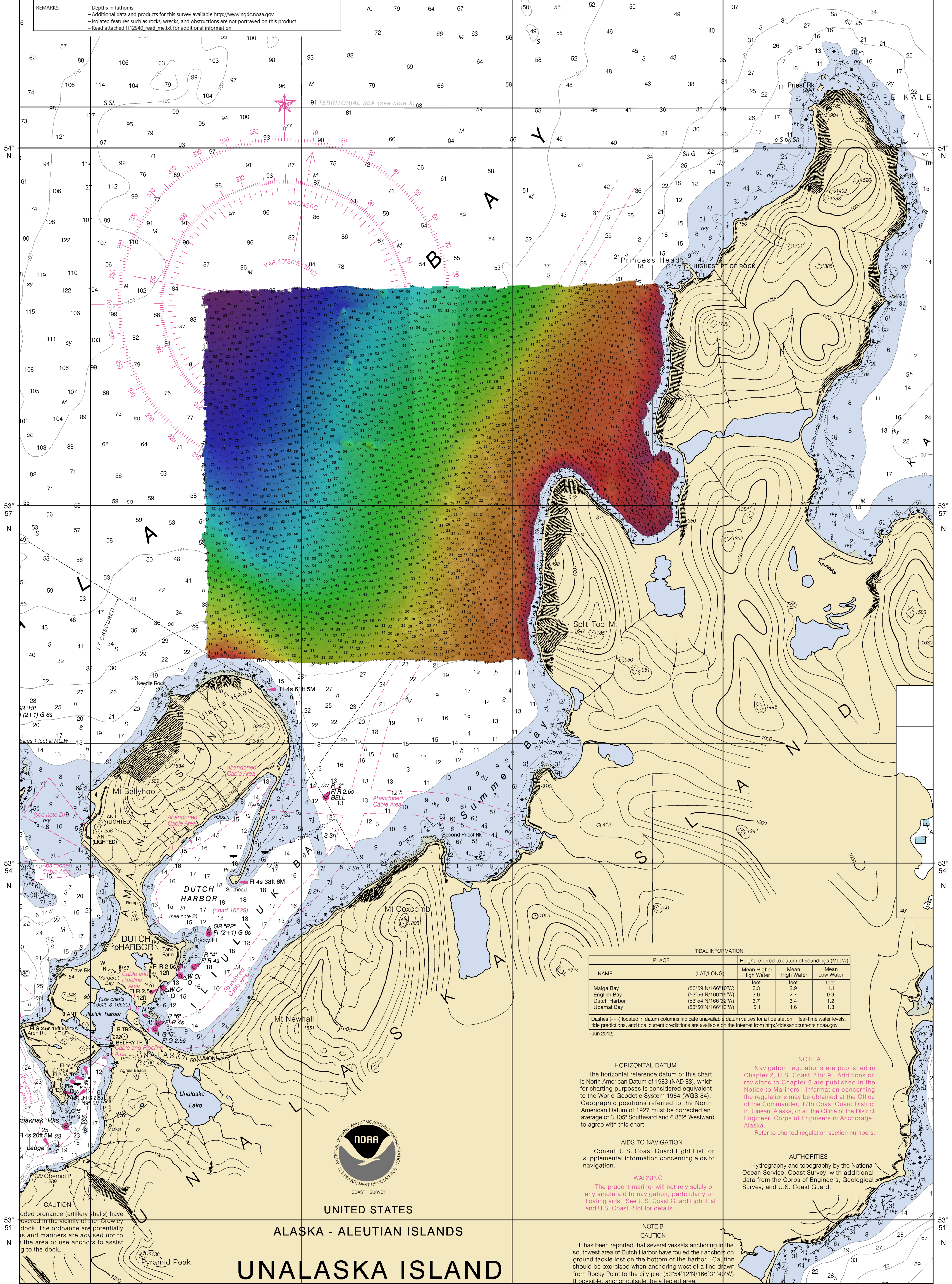


OPR-Q328-FA-16, H12940

Unalaska Island, Alaska

Vicinity of Constantine Bay and Split Top Mountain

REMARKS:
- Depths in fathoms
- Additional data and products for this survey available <http://www.ngdc.noaa.gov>
- Isolated features such as rocks, wrecks, and obstructions are not portrayed on this product
- Read attached H12940_read_mxtxt for additional information



TIDAL INFORMATION

NAME	PLACE (LAT/LONG)	Height referred to datum of soundings (MLLW)		
		Mean Higher High Water	Mean High Water	Mean Low Water
Maiga Bay	(53°59'N/166°10'W)	3.3	2.9	1.1
English Bay	(53°56'N/166°13'W)	3.0	2.7	0.9
Dutch Harbor	(53°54'N/166°12'W)	3.7	3.4	1.2
Udamat Bay	(53°50'N/166°13'W)	5.1	4.6	1.3

Dashes (---) located in datum columns indicate unavailable datum values for a tide station. Real-time water levels, tide predictions, and tidal current predictions are available on the internet from <http://tidesandcurrents.noaa.gov>. (Jun 2012)

HORIZONTAL DATUM
The horizontal reference datum of this chart is the North American Datum of 1983 (NAD 83), which for charting purposes is considered equivalent to the World Geodetic System 1984 (WGS 84). Geographic positions referred to the North American Datum of 1927 must be corrected an average of 3.105' Southward and 6.852' Westward to agree with this chart.

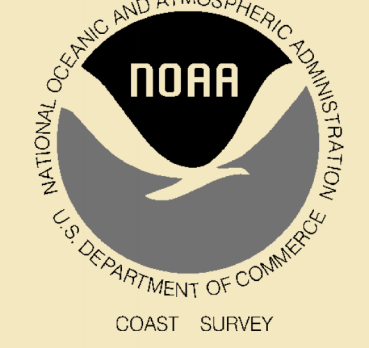
AIDS TO NAVIGATION
Consult U.S. Coast Guard Light List for supplemental information concerning aids to navigation.

WARNING
The prudent mariner will not rely solely on any single aid to navigation, particularly on floating aids. See U.S. Coast Guard Light List and U.S. Coast Pilot for details.

NOTE B CAUTION
It has been reported that several vessels anchoring in the southwest area of Dutch Harbor have fouled their anchors on ground tackle lost on the bottom of the harbor. Caution should be exercised when anchoring west of a line drawn from Rocky Point to the city pier (53°54'12"N/166°31'40"W). If possible, anchor outside the affected area.

NOTE A
Navigation regulations are published in Chapter 2, U.S. Coast Pilot 9. Additions or revisions to Chapter 2 are published in the Notice to Mariners. Information concerning the regulations may be obtained at the Office of the Commander, 17th Coast Guard District in Juneau, Alaska, or at the Office of the District Engineer, Corps of Engineers in Anchorage, Alaska.
Refer to charted regulation section numbers.

AUTHORITIES
Hydrography and topography by the National Ocean Service, Coast Survey, with additional data from the Corps of Engineers, Geological Survey, and U.S. Coast Guard.



UNITED STATES

ALASKA - ALEUTIAN ISLANDS

UNALASKA ISLAND

CAUTION
Unexploded ordnance (artillery shells) have been reported in the vicinity of the Crowley dock. The ordnance are potentially live and mariners are advised not to enter the area or use anchors to assist in getting to the dock.

Pyramid Peak