

131°36'W

131°33'W

131°30'W

131°27'W

131°24'W

131°21'W

131°18'W

**NOT FOR NAVIGATION**



NATIONAL OCEANIC AND ATMOSPHERIC ADMINISTRATION  
NATIONAL OCEAN SERVICE  
OFFICE OF COAST SURVEY



**OPR-O303-RA-16, H12968**

**George and Carroll Inlet, Alaska**  
Approaches to George and Carroll Inlets

REMARKS:  
- Depths in Fathoms  
- Additional data and products for this survey available <http://www.ncei.noaa.gov>  
- Isolated features such as rocks, wrecks, and obstructions are not portrayed on this product  
- Read attached H12968\_read\_me.txt for additional information

**CAUTION**  
Limitations on the use of radio signals as aids to marine navigation can be found in the U.S. Coast Guard Light Lists and National Geospatial-Intelligence Agency Publication 117. Radio direction-finder bearings to commercial broadcasting stations are subject to error and should be used with caution. Station positions are shown thus:  
○ (Accurate location)    ◐ (Approximate location)

**AIDS TO NAVIGATION**  
Consult U.S. Coast Guard Light List for supplemental information concerning aids to navigation.

**VEGETATION**  
The land is generally heavily wooded. The woods decrease in density with the elevation leaving the higher elevations bare.

**SUPPLEMENTAL INFORMATION**  
Consult U.S. Coast Pilot 8 for important supplemental information.

NOAA encourages users to submit inquiries, discrepancies or comments about this chart at <http://www.nauticalcharts.noaa.gov/staff/contact.htm>.

PLACE	NAME	(LAT/LONG)	TIDAL INFORMATION		
			Mean High Water	Mean High Water	Mean Low Water
			feet	feet	feet
Coon Island, George Inlet		(55°28'N/131°30'W)	15.3	14.4	1.5
Ward Cove, Tongass Narrows		(55°23'N/131°44'W)	15.7	14.8	1.5
Ava Bay, Behm Canal		(55°14'N/131°08'W)	15.2	14.3	1.5
Valenar Point, Behm Canal		(55°26'N/131°51'W)	15.3	14.4	1.5
Ketchikan, Tongass Narrows		(55°20'N/131°38'W)	15.4	14.5	1.6

**SOUNDINGS IN FATHOMS**  
(FATHOMS AND FEET TO ELEVEN FATHOMS)  
AT MEAN LOWER LOW WATER

For Symbols and Abbreviations see Chart No. 1

Additional information can be obtained at [nauticalcharts.noaa.gov](http://nauticalcharts.noaa.gov).

**HEIGHTS**  
Elevations of rocks and lights are in feet and refer to Mean High Water. Contour and summit elevation values are in feet and refer to Mean Sea Level.

**AUTHORITIES**  
Hydrography and topography by the National Ocean Service, Coast Survey, with additional data from the Corps of Engineers, Geological Survey, and U.S. Coast Guard.

**NOTE A**  
Navigation regulations are published in Chapter 2, U.S. Coast Pilot 8. Additions or revisions to Chapter 2 are published in the Notice to Mariners. Information concerning the regulations may be obtained at the Office of the Commander, 17th Coast Guard District in Juneau, Alaska, or at the Office of the District Engineer, Corps of Engineers in Anchorage, Alaska.  
Refer to charted regulation section numbers.

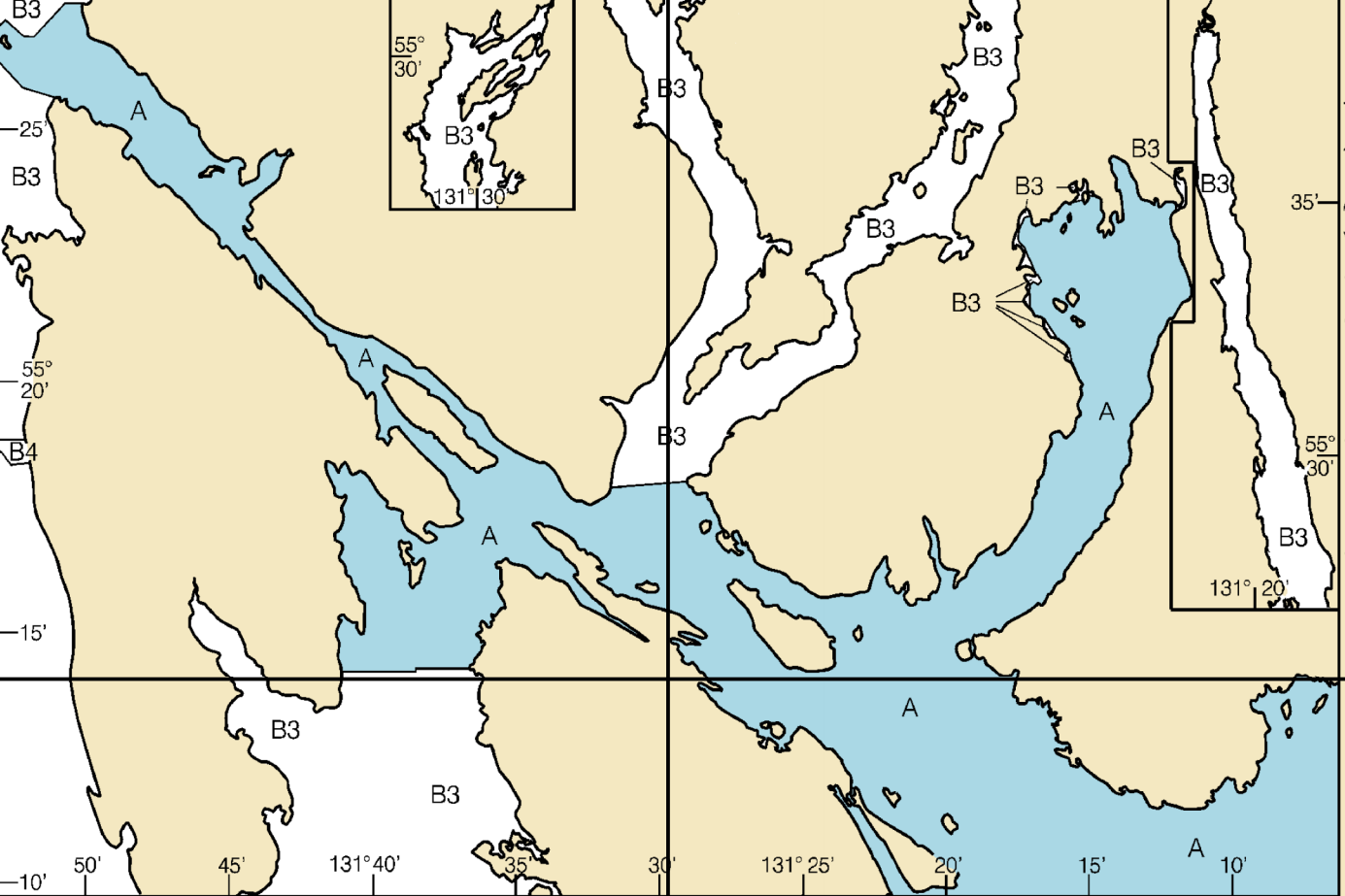
**CAUTION**  
Temporary changes or defects in aids to navigation are not indicated on this chart. See Local Notice to Mariners.

**HORIZONTAL DATUM**  
The horizontal reference datum of this chart is North American Datum of 1983 (NAD 83), which for charting purposes is considered equivalent to the World Geodetic System of 1984 (WGS 84). Geographic positions referred to the North American Datum of 1927 must be collected an average of 1.254' southward and 6.061' westward to agree with this chart.

**CAUTION**  
Radar reflectors have been placed on many floating aids to navigation. Individual radar reflector identification on these aids has been omitted from this chart.

**CAUTION**  
SURFACE PIPELINES AND CABLES  
Charted submarine pipelines and submarine cables and submarine pipeline and cable areas are shown as:  
--- Pipeline Area --- Cable Area  
Additional uncharted submarine pipelines and submarine cables may exist within the area of this chart. Not all submarine pipelines and submarine cables are required to be buried, and those that were originally buried may have become exposed. Mariners should use extreme caution when operating vessels in depths of water comparable to their draft in areas where pipelines and cables may exist, and when anchoring, dragging, or trawling. Covered wells may be marked by lighted or unlighted buoys.

SOURCE	1990-2012	1940-1969	1900-1939
A	NOS Surveys	NOS Surveys	NOS Surveys
B3	full bottom coverage	partial bottom coverage	partial bottom coverage
B4			



**SOURCE DIAGRAM**  
The outlined areas represent the limits of the most recent hydrographic survey information that has been evaluated for charting. Surveys have been banded in this diagram by date and type of survey. Channels maintained by the U.S. Army Corps of Engineers are periodically resurveyed and are

**COLREGS, 80.1705** (see note International Regulations for Preventing Collisions. The entire area of this chart falls seaward of the CO

**POLLUTION REPORTS**  
Report all spills of oil and hazardous substances to the National Response Center at 1-800-424-8802 (toll free), or to the nearest Coast Guard facility if telephone contact is impossible (33 CFR 153).

55° 24' N

55° 24' N

55° 21' N

55° 21' N

55° 18' N

55° 18' N

131°36'W

131°33'W

131°30'W

131°27'W

131°24'W

131°21'W

131°18'W