

81°0'0"W

80°56'0"W

80°52'0"W

80°48'0"W

80°44'0"W

NOT FOR NAVIGATION



NATIONAL OCEANIC AND ATMOSPHERIC ADMINISTRATION
NATIONAL OCEAN SERVICE
OFFICE OF COAST SURVEY



OPR-G343-FH-19, H12982

Northeastern Florida, Florida
25NM East of St Johns River

REMARKS:
- Depths in Meters
- Additional data and products for this survey available <https://www.ncei.noaa.gov>
- Isolated features such as rocks, wrecks, and obstructions are not portrayed on this product
- Read attached H12982_read_me.txt for additional information

30°24'0"N

30°24'0"N

30°20'0"N

30°20'0"N

30°20'0"N

30°20'0"N

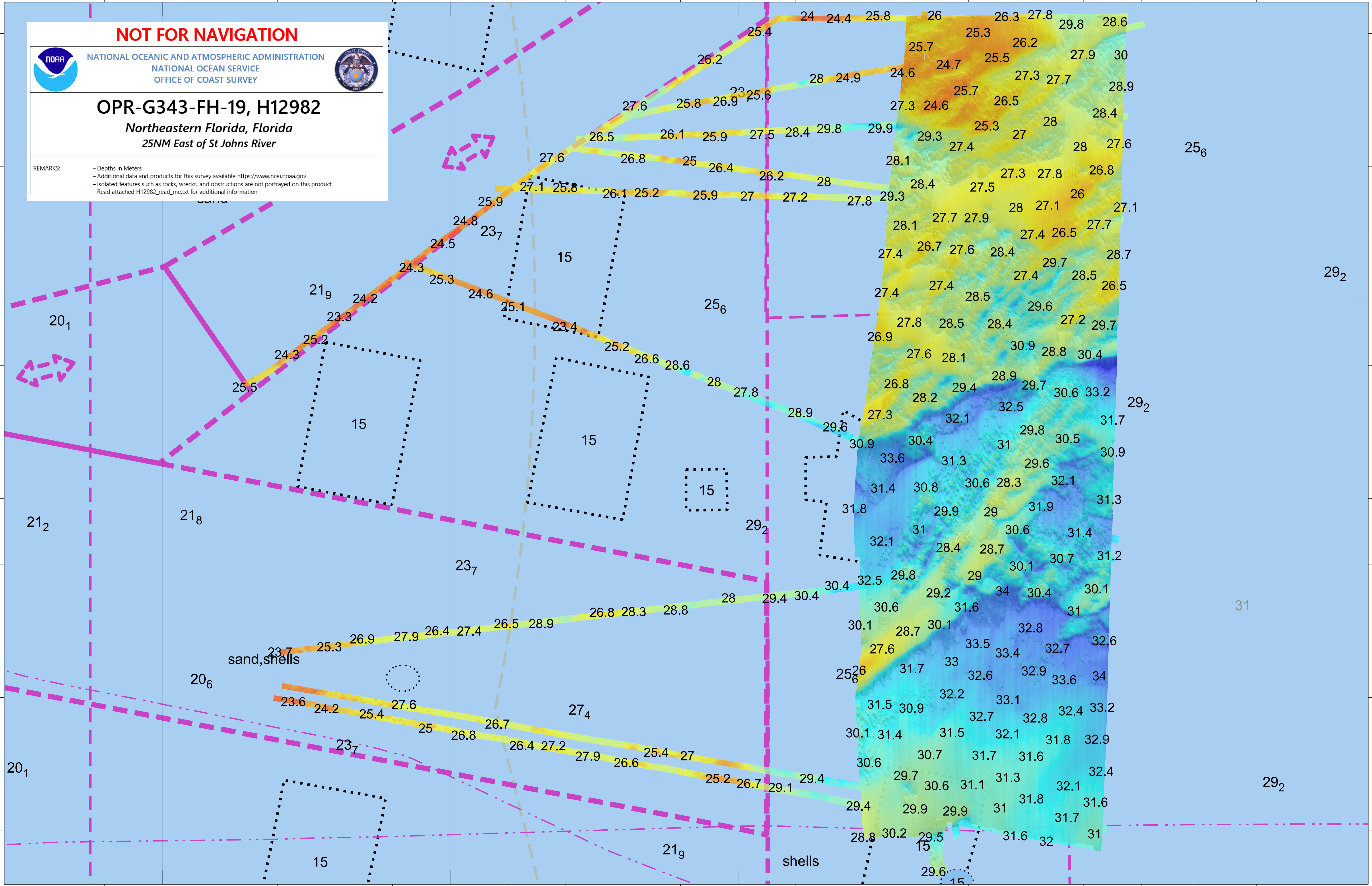
81°0'0"W

80°56'0"W

80°52'0"W

80°48'0"W

80°44'0"W



20₁

21₂

21₈

21₉

15

15

15

23₇

29₂

31

20₆

20₁

15

21₉

29₂

sand, shells

shells

15

23₇

25.3

26.9

27.9

26.4

27.4

26.5

28.9

27.6

33.5

33.4

32.7

32.6

23.6

24.2

25.4

27.6

25

26.7

27.4

26.8

27.2

27.9

25.4

27

25.2

26.6

23.7

25.3

26.9

27.9

26.4

27.4

26.5

28.9

27.6

33.5

33.4

32.7

32.6

23.6

24.2

25.4

27.6

25

26.7

27.4

26.8

27.2

27.9

25.4

27

25.2

26.6

23.7

25.3

26.9

27.9

26.4

27.4

26.5

28.9

27.6

33.5

33.4

32.7

32.6

23.6

24.2

25.4

27.6

25

26.7

27.4

26.8

27.2

27.9

25.4

27

25.2

26.6

23.7

25.3

26.9

27.9

26.4

27.4

26.5

28.9

27.6

33.5

33.4

32.7

32.6

23.6

24.2

25.4

27.6

25

26.7

27.4

26.8

27.2

27.9

25.4

27

25.2

26.6

23.7

25.3

26.9

27.9

26.4

27.4

26.5

28.9

27.6

33.5

33.4

32.7

32.6

23.6

24.2

25.4

27.6

25

26.7

27.4

26.8

27.2

27.9

25.4

27

25.2

26.6

23.7

25.3

26.9

27.9

26.4

27.4

26.5

28.9

27.6

33.5

33.4

32.7

32.6

23.6

24.2

25.4

27.6

25

26.7

27.4

26.8

27.2

27.9

25.4

27

25.2

26.6

23.7

25.3

26.9

27.9

26.4

27.4

26.5

28.9

27.6

33.5

33.4

32.7

32.6

23.6

24.2

25.4

27.6

25

26.7

27.4

26.8

27.2

27.9

25.4

27

25.2

26.6

23.7

25.3

26.9

27.9

26.4

27.4

26.5

28.9

27.6

33.5

33.4

32.7

32.6

23.6

24.2

25.4

27.6

25

26.7

27.4

26.8

27.2

27.9

25.4

27

25.2

26.6

23.7

25.3

26.9

27.9

26.4

27.4

26.5

28.9

27.6

33.5

33.4

32.7

32.6

23.6

24.2

25.4

27.6

25

26.7

27.4

26.8

27.2

27.9

25.4

27

25.2

26.6

23.7

25.3

26.9

27.9

26.4

27.4

26.5

28.9

27.6

33.5

33.4

32.7

32.6

23.6

24.2

25.4

27.6

25

26.7

27.4

26.8

27.2

27.9

25.4

27

25.2

26.6

23.7

25.3

26.9

27.9