

81°40'W

81°00'W

30°20'0"N

30°20'0"N

30°16'0"N

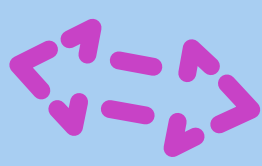
30°16'0"N

30°12'0"N

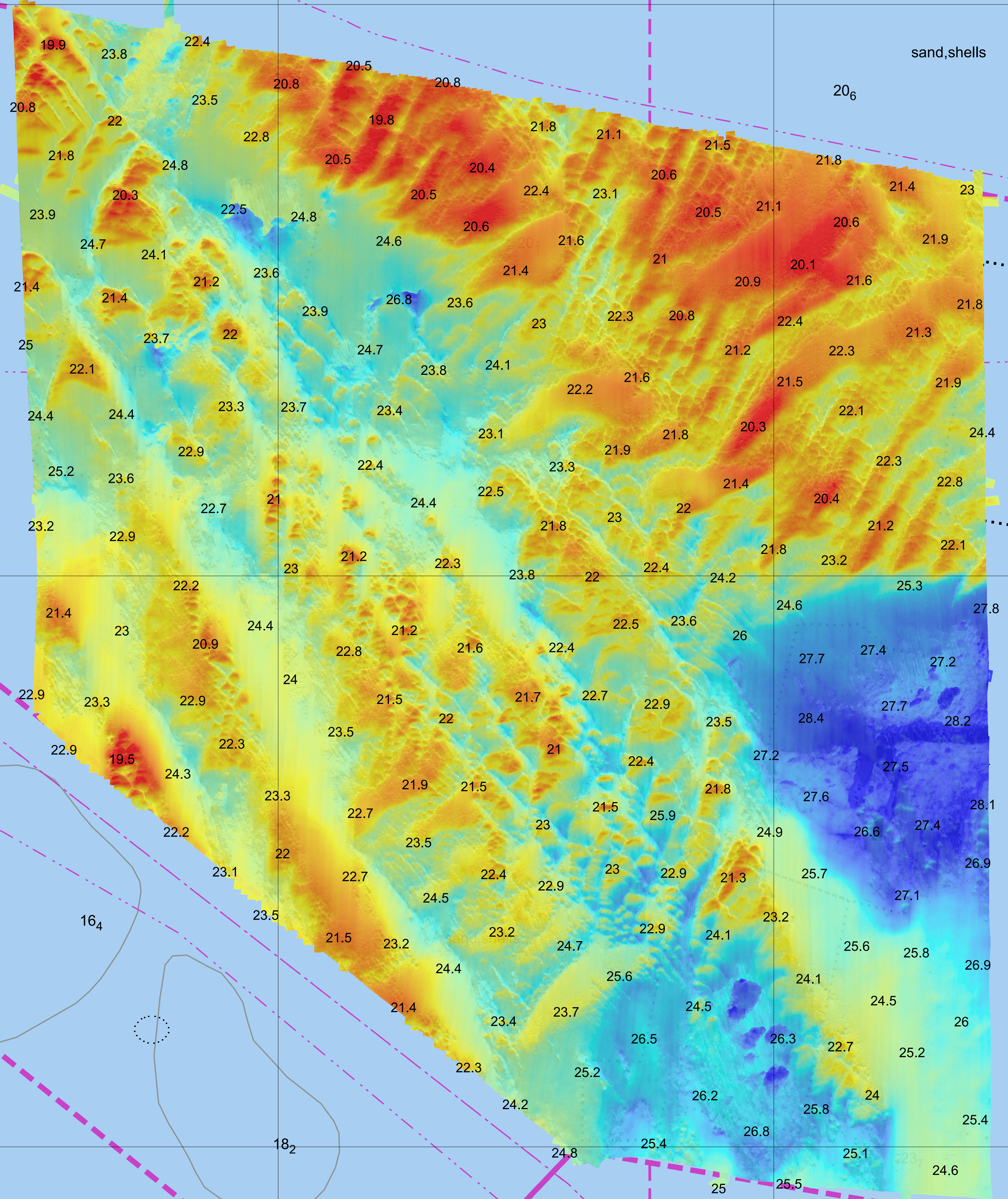
30°12'0"N

81°40'W

81°00'W



sand, shells



**NOT FOR NAVIGATION**



NATIONAL OCEANIC AND ATMOSPHERIC ADMINISTRATION  
NATIONAL OCEAN SERVICE  
OFFICE OF COAST SURVEY



**OPR-G343-FH-19, H12985**

*Northeastern Florida, Florida  
20 NM East of Jacksonville Beach*

REMARKS:  
- Depths in Meters  
- Additional data and products for this survey available <https://www.ncei.noaa.gov>  
- Isolated features such as rocks, wrecks, and obstructions are not portrayed on this product  
- Read attached H12985\_read\_me.txt for additional information

20<sub>1</sub>

21<sub>9</sub>

18<sub>2</sub>

20<sub>1</sub>