

NOTE C

Mariners should use caution as military craft may be operating within the area. For further information consult the U.S. Coast Guard Local Notice to Mariners.

CAUTION

Mariners are warned to stay clear of the protective riprap surrounding navigational light structures thus:

SCALE 1:40,000
Nautical Miles

COLREGS, 80.1395(see note A)
International Regulations for Preventing Collisions at Sea, 1972.
The entire area of this chart falls seaward of the COLREGS Demarcation Line

CAUTION
Temporary changes or defects in aids to navigation are not indicated on this chart. See Local Notice to Mariners.

SUPPLEMENTAL INFORMATION
Consult U.S. Coast Pilot 7 for important supplemental information.

NOTE H

U.S. Coast Guard operates a mandatory Vessel Traffic Services (VTS) system in the Puget Sound and operating procedures and designated radiotelephone frequencies are published in 33 CFR 161, the U.S. Coast Guard VTS User's Manual. The entire area of the chart falls within the VTS system.

PRINT-ON-DEMAND CHARTS

This chart is available in a version updated weekly by NOAA for Notices to Mariners and critical corrections. Charts are printed when ordered using Print-on-Demand Technology. New Editions are available 5-8 weeks before their release as traditional NOAA charts. Ask your chart agent about Print-on-Demand charts.

POLLUTION REPORTS

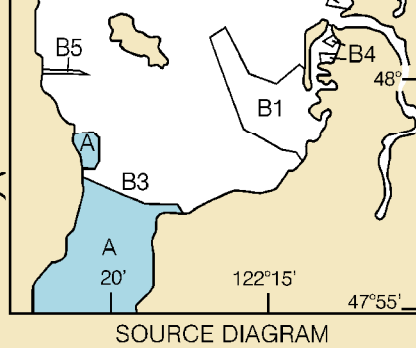
Report all spills of oil and hazardous substances to the National Response Center via 1-800-424-8802 (toll free), or to the nearest U.S. Coast Guard facility if telephone communication is impossible (33 CFR 153).

RADAR REFLECTORS

Radar reflectors have been placed on many floating aids to navigation. Individual radar reflector identification on these aids has been omitted from this chart.

SOURCE

- A 1990-2013 full bottom coverage
- B1 1990-2006 partial bottom coverage
- B3 1940-1969 partial bottom coverage
- B4 1900-1939 partial bottom coverage
- B5 1834-1899 partial bottom coverage



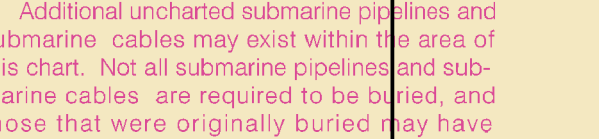
The outlined areas represent the limits of the most recent hydrographic survey information that has been evaluated for charting. Surveys have been banded in this diagram by date and type of survey. Channels maintained by the U.S. Army Corps of Engineers are periodically resurveyed and are not shown in this diagram. Refer to Chapter 1, United States Coast Pilot.

NOTE C

Mariners are cautioned that the Washington State Ferries may deviate from the published standard routes due to increased weather, traffic conditions, navigational hazards or other emergency conditions.

CAUTION

SUBMARINE PIPELINES AND CABLES
Charted submarine pipelines and submarine cables and submarine pipeline and cable areas are shown as:



Additional uncharted submarine pipelines and submarine cables may exist within the area of this chart. Not all submarine pipelines and submarine cables are required to be buried, and those that were originally buried may have become exposed. Mariners should use extreme caution when operating vessels in depths of water comparable to their draft in areas where pipelines and cables may exist, and when anchoring, dragging, or trawling. Covered wells may be marked by lighted or unlighted buoys.

EVERETT HARBOR AND SNOHOM

The project depth of the entrance is 15 feet. For controlling depths use charted soundings.

AIDS TO NAVIGATION

Consult U.S. Coast Guard Light List for supplemental information concerning navigation.

CAUTION

Limitations on the use of radio stations for marine navigation can be found in the U.S. Coast Guard Light List and Geospatial-Intelligence Agency Publications. Radio direction-finder bearings to broadcasting stations are subject to error. Station positions are shown thus: (A) Accurate location (B) Approximate location

NOTE A

Navigation regulations are published in the U.S. Coast Pilot 7. Additions or revisions to regulations may be obtained at the Office of the 13th Coast Guard District in Seattle, Washington Office of the District Engineer, Corps of Engineers, Washington. Refer to charted regulation section numbers.

NOTE B

The U.S. Coast Guard operates a mandatory Vessel Traffic Services (VTS) system in the Puget Sound and operating procedures and designated radiotelephone frequencies are published in 33 CFR 161, the U.S. Coast Guard VTS User's Manual. The entire area of the chart falls within the Vessel Traffic Services (VTS) system.

NOT FOR NAVIGATION
NATIONAL OCEANIC AND ATMOSPHERIC ADMINISTRATION
NATIONAL OCEAN SERVICE
OFFICE OF COAST SURVEY
OPR-N305-RA-18, H12991
Puget Sound, WA
Approaches to Everett, WA

REMARKS: -Depths in Fathoms
-Additional data and products for this survey available <https://www.noaa.gov>
-Issued before such as rocks, wrecks, and obstructions are not printed on this product
-Final attached 11/2011_email_list for additional information