

68°36'W

68°33'W

68°30'W

68°27'W

68°24'W

44° 12' N

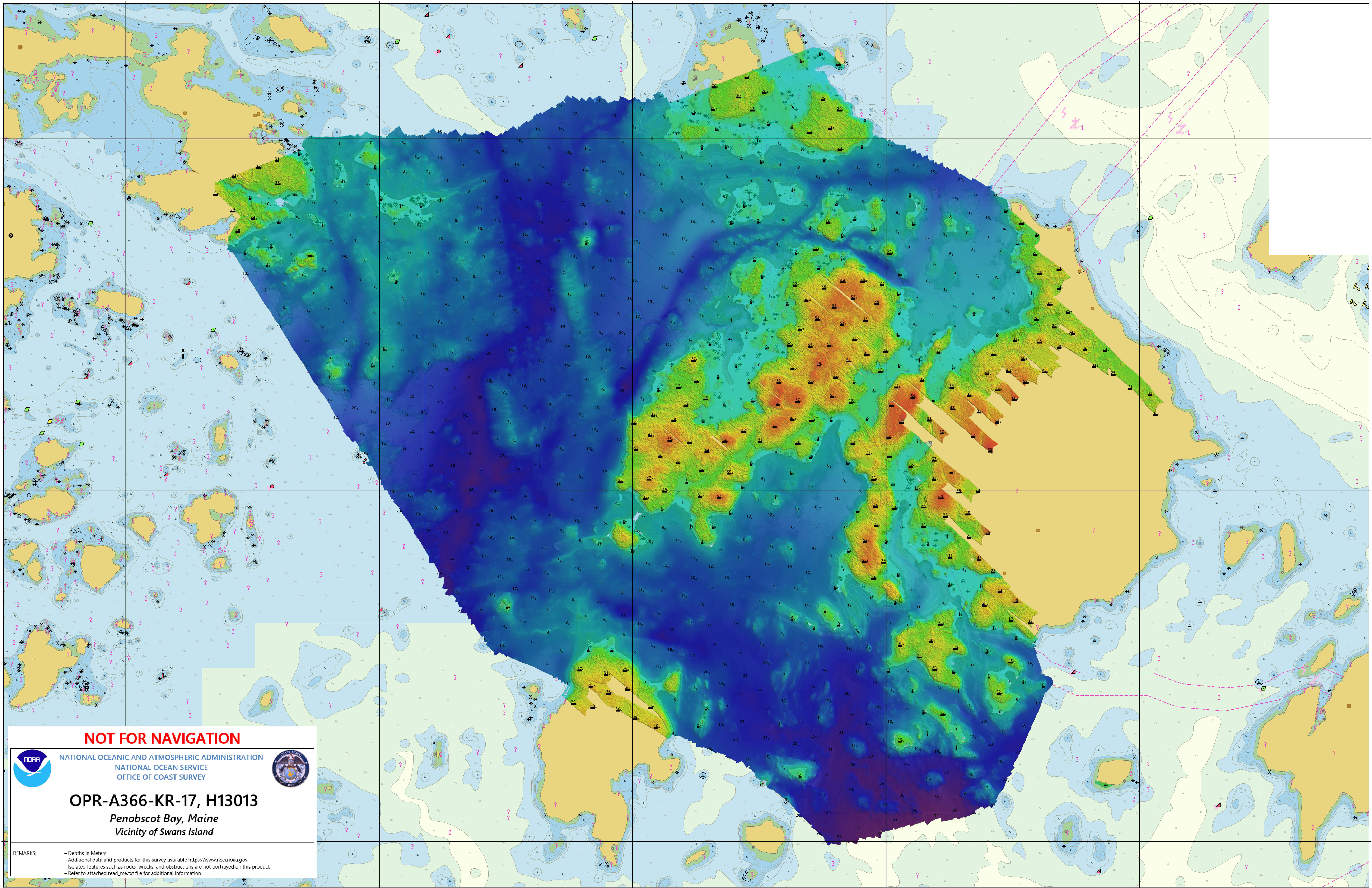
44° 12' N

44° 09' N

44° 09' N

44° 06' N

44° 06' N



NOT FOR NAVIGATION



NATIONAL OCEANIC AND ATMOSPHERIC ADMINISTRATION
 NATIONAL OCEAN SERVICE
 OFFICE OF COAST SURVEY



OPR-A366-KR-17, H13013

*Penobscot Bay, Maine
 Vicinity of Swans Island*

REMARKS:
 -Depths in Meters
 -Additional data and products for this survey available <https://www.ncei.noaa.gov>
 -Isolated features such as rocks, wrecks, and obstructions are not portrayed on this product
 -Refer to attached read_me.txt file for additional information

68°36'W

68°33'W

68°30'W

68°27'W

68°24'W