



68°51'W 68°48'W 68°45'W 68°42'W 68°39'W 68°36'W 68°33'W 68°30'W 68°27'W 68°24'W

**NOT FOR NAVIGATION**

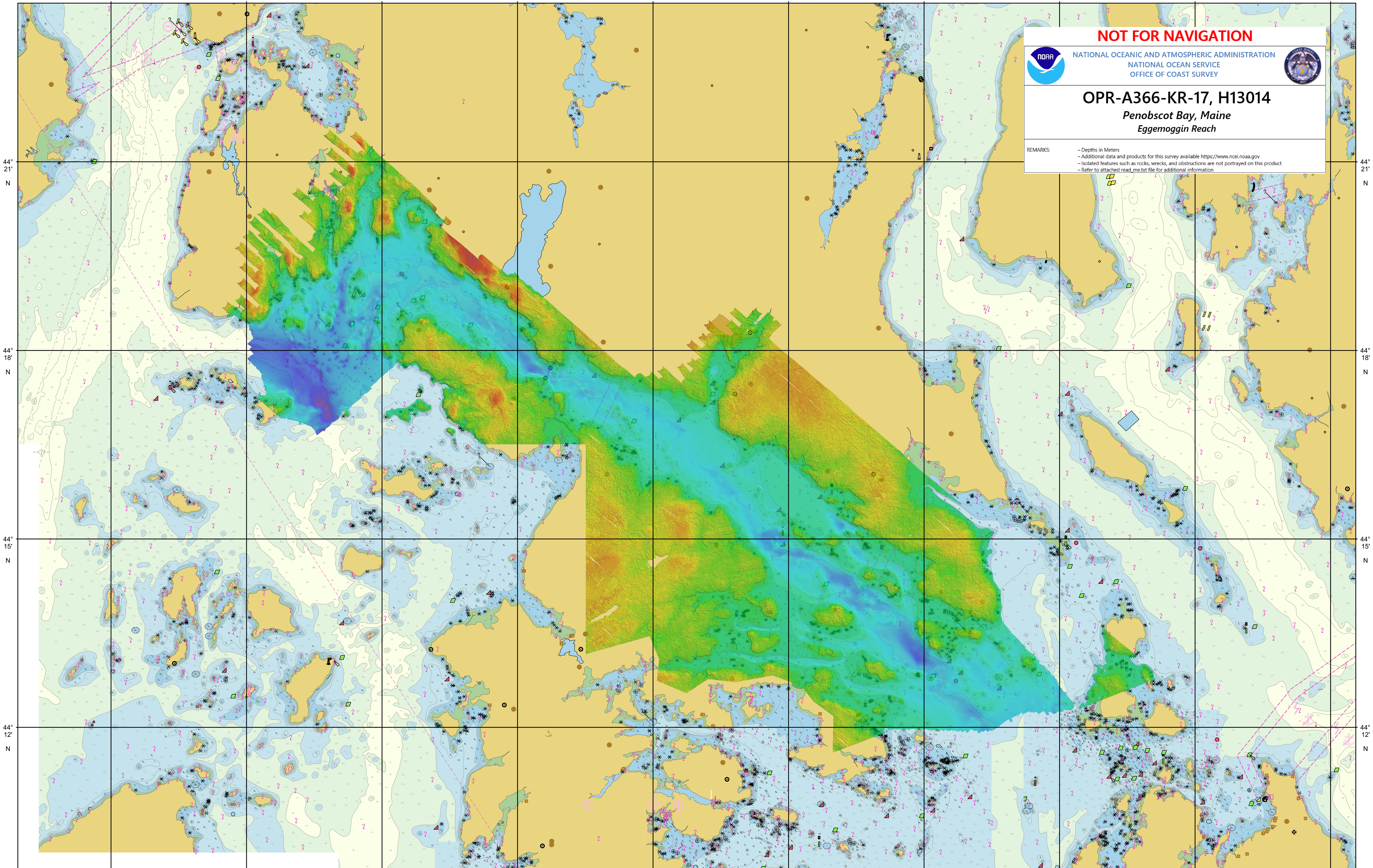


NATIONAL OCEANIC AND ATMOSPHERIC ADMINISTRATION  
NATIONAL OCEAN SERVICE  
OFFICE OF COAST SURVEY



**OPR-A366-KR-17, H13014**  
*Penobscot Bay, Maine*  
*Eggemoggin Reach*

REMARKS:  
- Depths in Meters  
- Additional data and products for this survey available <https://www.ncei.noaa.gov>  
- Isolated features such as rocks, wrecks, and obstructions are not portrayed on this product  
- Refer to attached read\_me.txt file for additional information



68°51'W 68°48'W 68°45'W 68°42'W 68°39'W 68°36'W 68°33'W 68°30'W 68°27'W 68°24'W

44° 21' N  
44° 18' N  
44° 15' N  
44° 12' N

44° 21' N  
44° 18' N  
44° 15' N  
44° 12' N