

161°18'W 161°15'W 161°12'W 161°09'W 161°06'W 161°03'W 161°W 160°57'W 160°54'W 160°51'W 160°48'W 160°45'W

NOT FOR NAVIGATION



NATIONAL OCEANIC AND ATMOSPHERIC ADMINISTRATION
NATIONAL OCEAN SERVICE
OFFICE OF COAST SURVEY



OPR-P384-KR-17, H13036

Aleutian Islands, Alaska
Vicinity of Beaver Bay

REMARKS:
- Depths in Fathoms
- Additional data and products for this survey available <http://www.ngdc.noaa.gov>
- Isolated features such as rocks, wrecks, and obstructions are not portrayed on this product
- Read attached H13036_read_me.txt for additional information

NAME	PLACE	(LAT/LONG)	Height referred to datum of soundings (MLLW)		
			Mean High Water	Mean High Water	Mean Low Water
Beaver Bay		(55°28'N/160°50'W)	7.3	6.6	1.4
Ukolnoi Island		(55°16'N/161°32'W)	7.0	6.3	1.3
Settlement Point		(55°30'N/161°28'W)	7.2	6.4	1.2

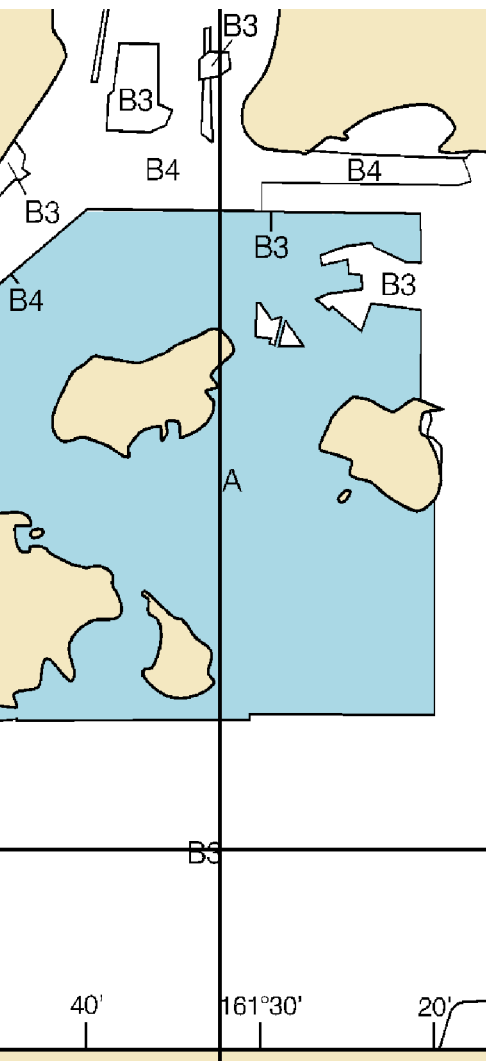
Dashes (---) located in datum columns indicate unavailable datum values for a tide station. Real-time water levels, tide predictions, and tidal current predictions are available on the Internet from <http://tidesandcurrents.noaa.gov>. (Apr 2014)

Local Notice to Mariners.

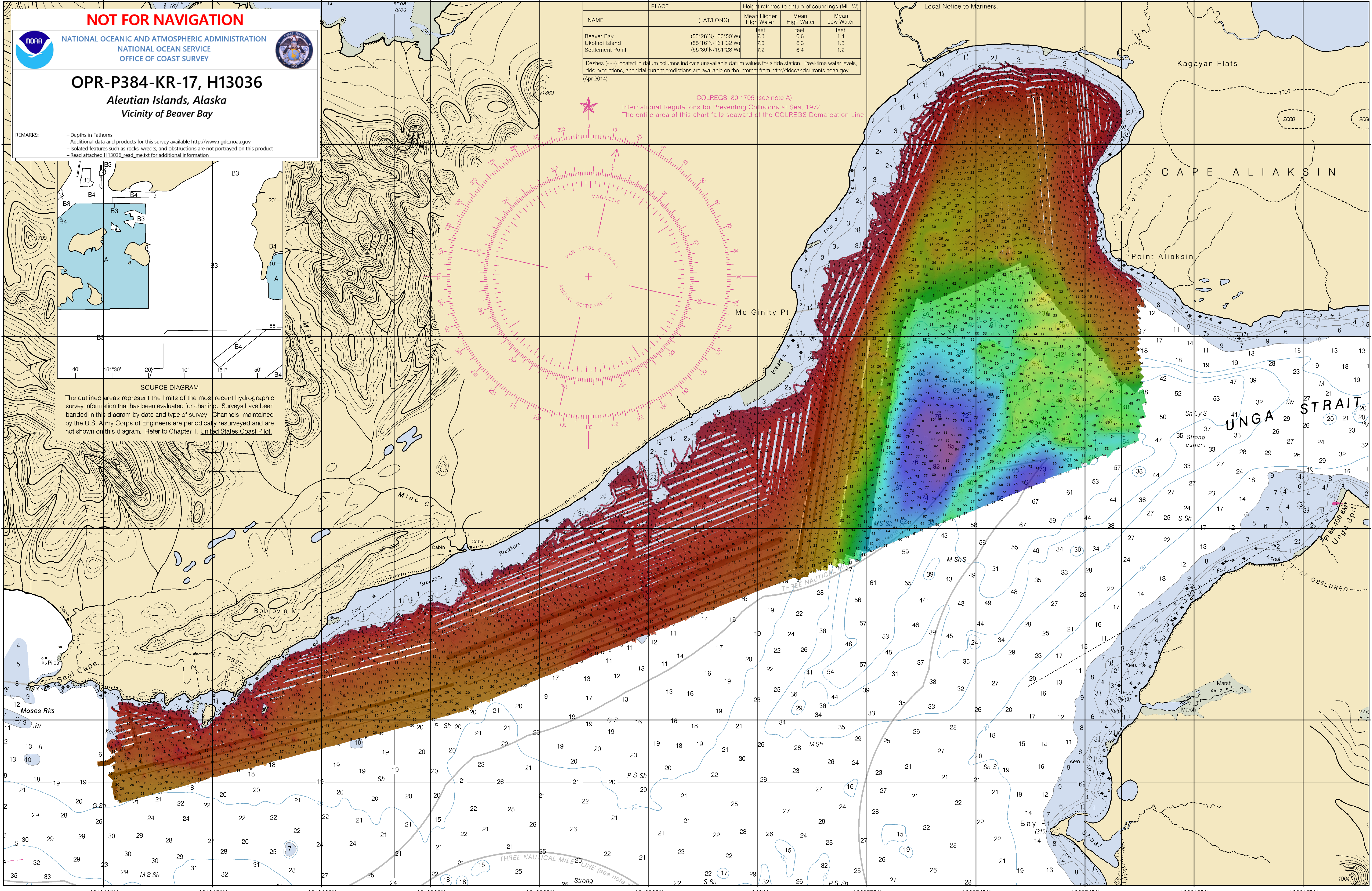
COLREGS, 80.1705 (see note A)
International Regulations for Preventing Collisions at Sea, 1972.
The entire area of this chart falls seaward of the COLREGS Demarcation Line.

55°30' N
55°27' N
55°24' N
55°21' N

55°30' N
55°27' N
55°24' N
55°21' N



The outlined areas represent the limits of the most recent hydrographic survey information that has been evaluated for charting. Surveys have been banded in this diagram by date and type of survey. Channels maintained by the U.S. Army Corps of Engineers are periodically resurveyed and are not shown on this diagram. Refer to Chapter 1, United States Coast Pilot.



161°18'W 161°15'W 161°12'W 161°09'W 161°06'W 161°03'W 161°W 160°57'W 160°54'W 160°51'W 160°48'W 160°45'W