

NOT FOR NAVIGATION



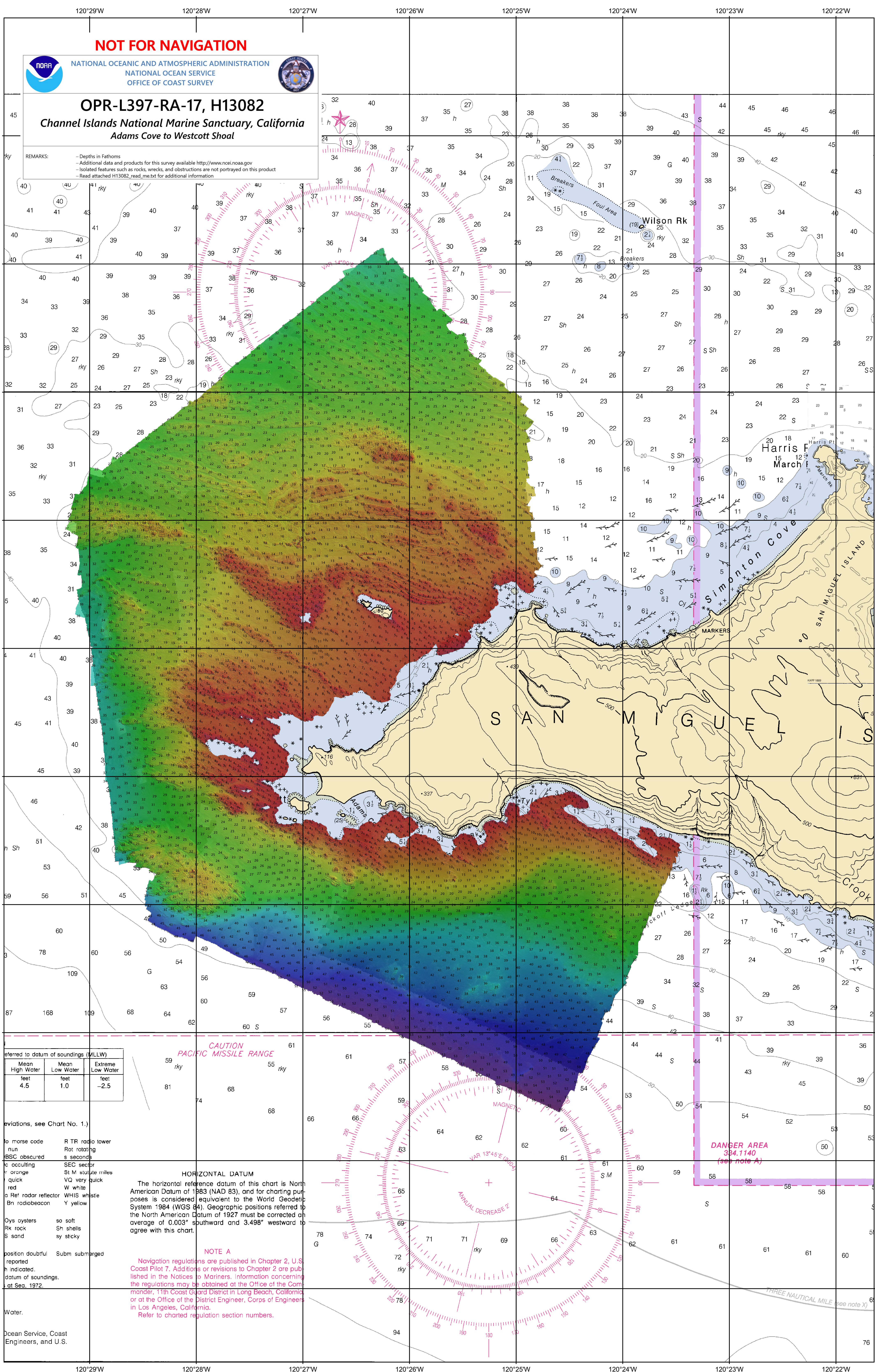
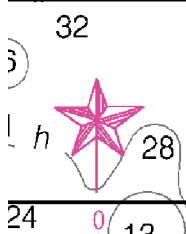
NATIONAL OCEANIC AND ATMOSPHERIC ADMINISTRATION
NATIONAL OCEAN SERVICE
OFFICE OF COAST SURVEY



OPR-L397-RA-17, H13082

Channel Islands National Marine Sanctuary, California
Adams Cove to Westcott Shoal

REMARKS:
- Depths in Fathoms
- Additional data and products for this survey available <http://www.ncei.noaa.gov>
- Isolated features such as rocks, wrecks, and obstructions are not portrayed on this product
- Read attached H13082_read_me.txt for additional information



referred to datum of soundings (MLLW)		
Mean High Water	Mean Low Water	Extreme Low Water
feet 4.5	feet 1.0	feet -2.5

Deviations, see Chart No. 1.)

to Morse code	R TR radio tower
nun	Rot rotating
BSC obscured	s seconds
c occulting	SEC sector
r orange	St M statute miles
quick	VQ very quick
red	W white
a Ref radar reflector	WHIS whistle
Bn radiobeacon	Y yellow

HORIZONTAL DATUM
The horizontal reference datum of this chart is North American Datum of 1983 (NAD 83), and for charting purposes is considered equivalent to the World Geodetic System 1984 (WGS 84). Geographic positions referred to the North American Datum of 1927 must be corrected an average of 0.003" southward and 3.498" westward to agree with this chart.

NOTE A
Navigation regulations are published in Chapter 2, U.S. Coast Pilot 7. Additions or revisions to Chapter 2 are published in the Notices to Mariners. Information concerning the regulations may be obtained at the Office of the Commander, 11th Coast Guard District in Long Beach, California or at the Office of the District Engineer, Corps of Engineers in Los Angeles, California.
Refer to charted regulation section numbers.

Oys oysters
Rk rock
S sand

position doubtful
reported
h indicated.
datum of soundings.
at Sea, 1972.

Water.

Ocean Service, Coast
Engineers, and U.S.

DANGER AREA
334.1140
(see note A)

CAUTION
PACIFIC MISSILE RANGE

THREE NAUTICAL MILE (see note X)