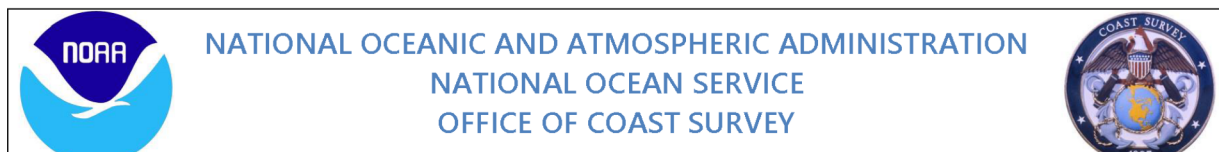


75°30'W 75°27'W 75°24'W 75°21'W 75°18'W 75°15'W

12

NOT FOR NAVIGATION

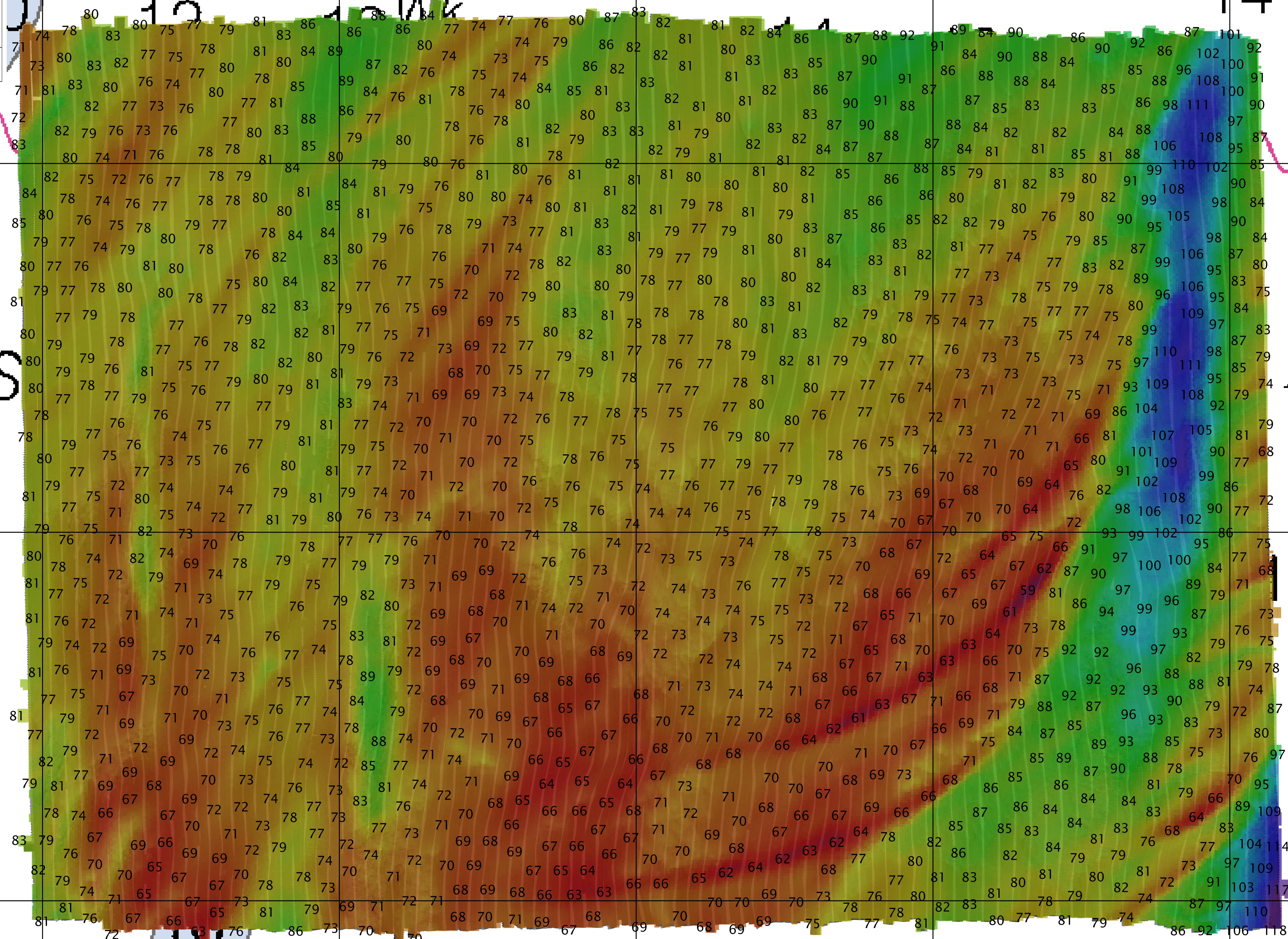


OPR-D304-FH-18, H13094

Approaches to Chesapeake Bay, Virginia  
23 NM offshore of False Cape, VA

REMARKS:  
- Depths in Feet  
- Additional data and products for this survey available <https://www.ncei.noaa.gov>  
- Isolated features such as rocks, wrecks, and obstructions are not portrayed on this product  
- Read attached H13094\_read\_me.txt for additional information

14



10

9

SS

11

13

15

36° 48' N

36° 45' N

36° 42' N

36° 48' N

36° 45' N

36° 42' N

75°30'W 75°27'W 75°24'W 75°21'W 75°18'W 75°15'W