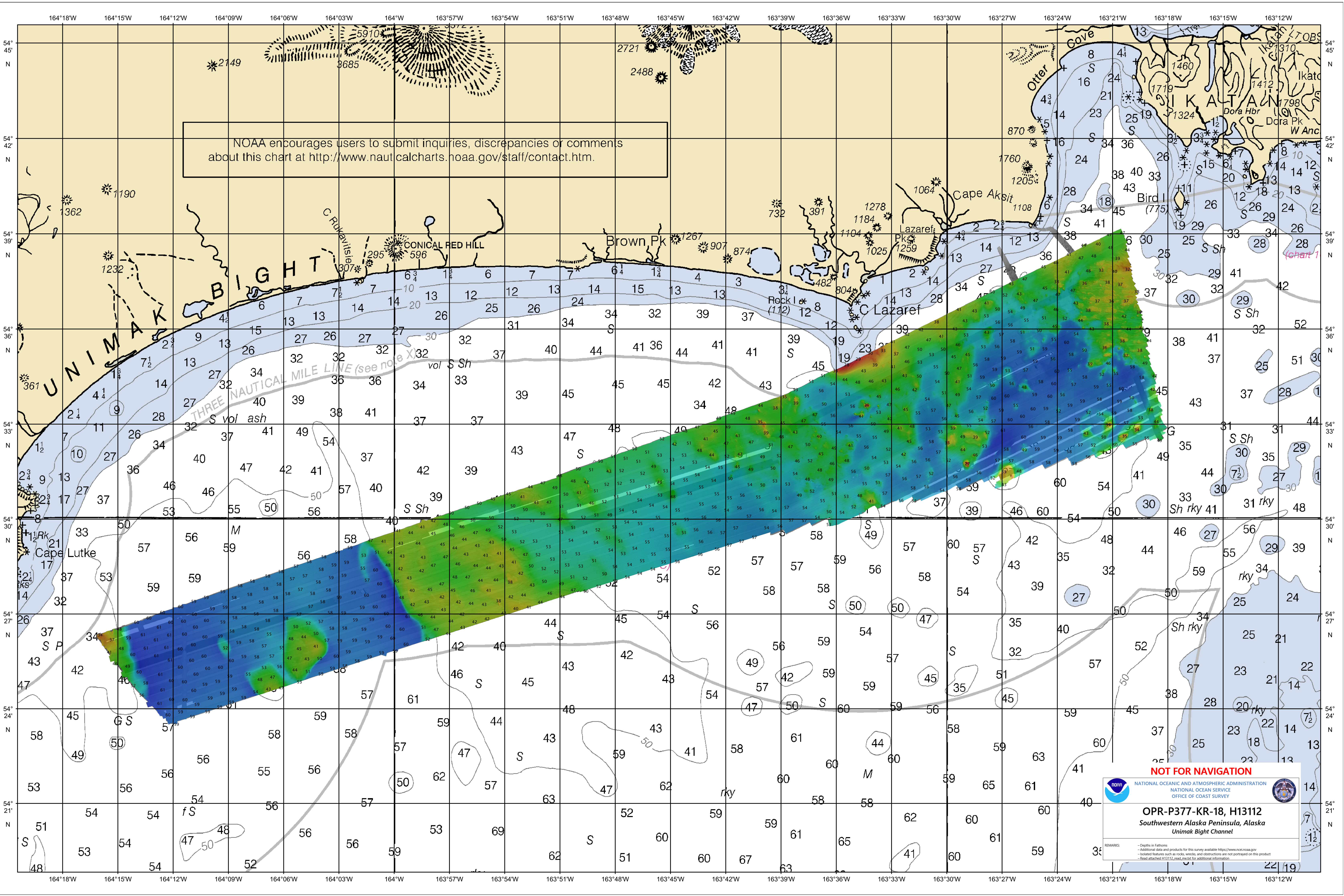


NOAA encourages users to submit inquiries, discrepancies or comments about this chart at <http://www.nauticalcharts.noaa.gov/staff/contact.htm>.



NOT FOR NAVIGATION

NOAA
NATIONAL OCEANIC AND ATMOSPHERIC ADMINISTRATION
NATIONAL OCEAN SERVICE
OFFICE OF COAST SURVEY

OPR-P377-KR-18, H13112
Southwestern Alaska Peninsula, Alaska
Unimak Bight Channel

REMARKS:
- Depths in fathoms
- Additional data and products for this survey available <http://www.ncei.noaa.gov>
- Isolated features such as rocks, wrecks, and obstructions are not portrayed on this product
- Read attached H13112.000 manual for additional information