

66°08'W 66°07'W 66°06'W 66°05'W 66°04'W

18° 28' N

18° 28' N

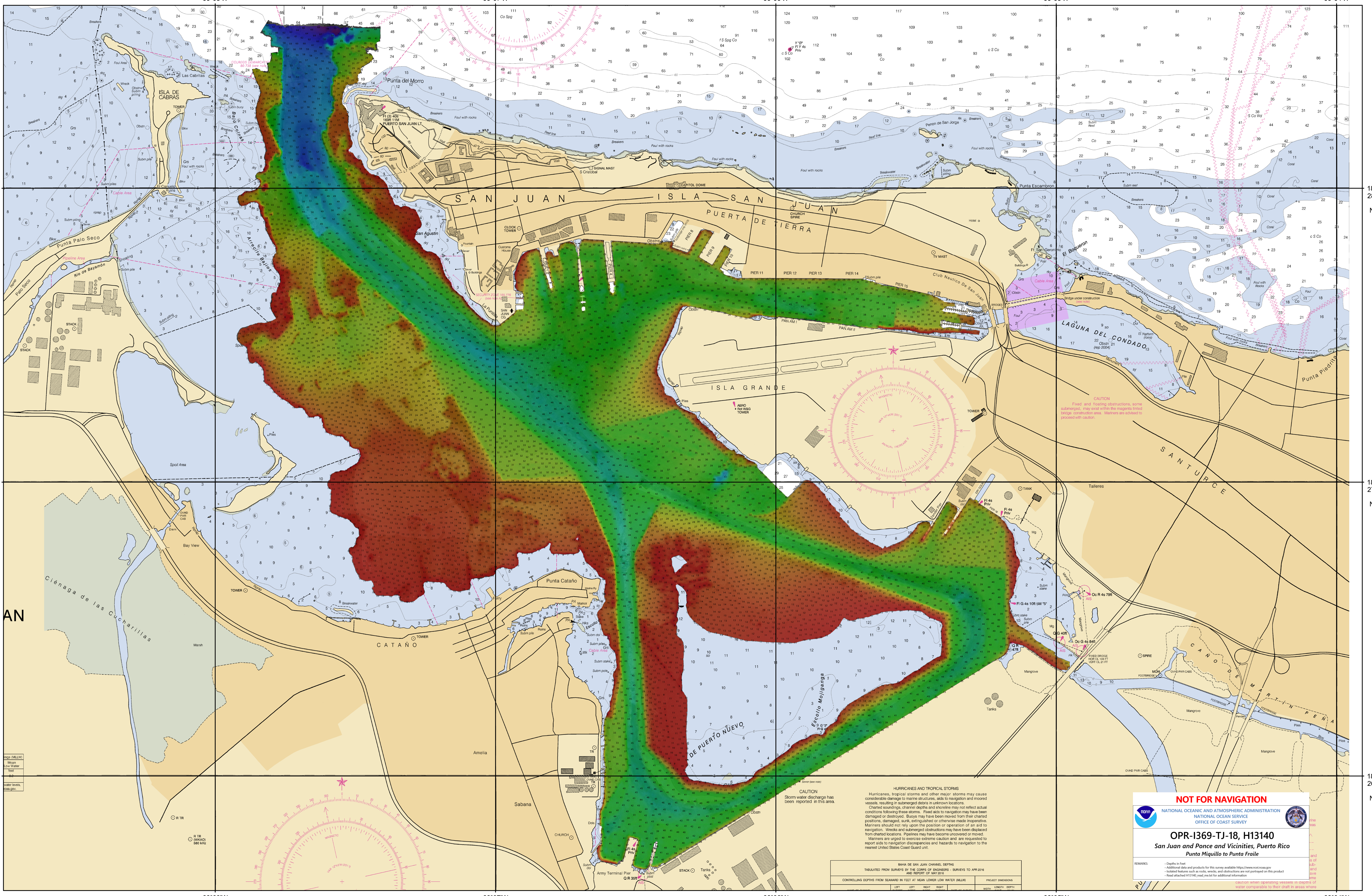
18° 27' N

18° 27' N

18° 26' N

18° 26' N

66°08'W 66°07'W 66°06'W 66°05'W 66°04'W



CAUTION
Fixed and floating obstructions, some submerged, may exist within the magnetic bridge construction area. Mariners are advised to proceed with caution.

CAUTION
Storm water discharge has been reported in this area.

HURRICANES AND TROPICAL STORMS
Hurricanes, tropical storms and other major storms may cause considerable damage to marine structures, aids to navigation and moored vessels, resulting in submerged obstructions in unknown locations. Charted soundings, channel depths and shorelines may not reflect actual conditions following these storms. Fixed aids to navigation may have been damaged or destroyed. Buoys may have been moved from their charted positions, damaged, sunk, extinguished or otherwise made inoperative. Mariners should not rely upon the position or operation of an aid to navigation. Winds and submerged obstructions may have been displaced from charted locations. Pipelines may have become uncovered or moved. Mariners are urged to exercise extreme caution and are requested to report aids to navigation discrepancies and hazards to navigation to the nearest United States Coast Guard unit.

NOT FOR NAVIGATION

NATIONAL OCEANIC AND ATMOSPHERIC ADMINISTRATION
NATIONAL OCEAN SERVICE
OFFICE OF COAST SURVEY

OPR-I369-TJ-18, H13140
San Juan and Ponce and Vicinities, Puerto Rico
Punta Miquillo to Punta Fraile

REMARKS:
- Depths in feet
- Additional data and products for this survey available <https://www.ncei.noaa.gov>
- Isolated features such as rocks, wrecks, and obstructions are not portrayed on this product
- Read attached H13140 and product for additional information

CAUTION: When operating vessels in depths of water comparable to their draft in areas where

BAY OF SAN JUAN CHANNEL DEPTHS
TABULATED FROM SURVEYS BY THE CORPS OF ENGINEERS - SURVEYS TO APR 2016
AND REPORT OF MAY 2018

CONTROLLING DEPTHS FROM SEAWARD IN FEET AT MEAN LOWER LOW WATER (MLLW)		PROJECT DIMENSIONS	
LEFT	RIGHT	WIDTH	DEPTH

AN

AN

AN