

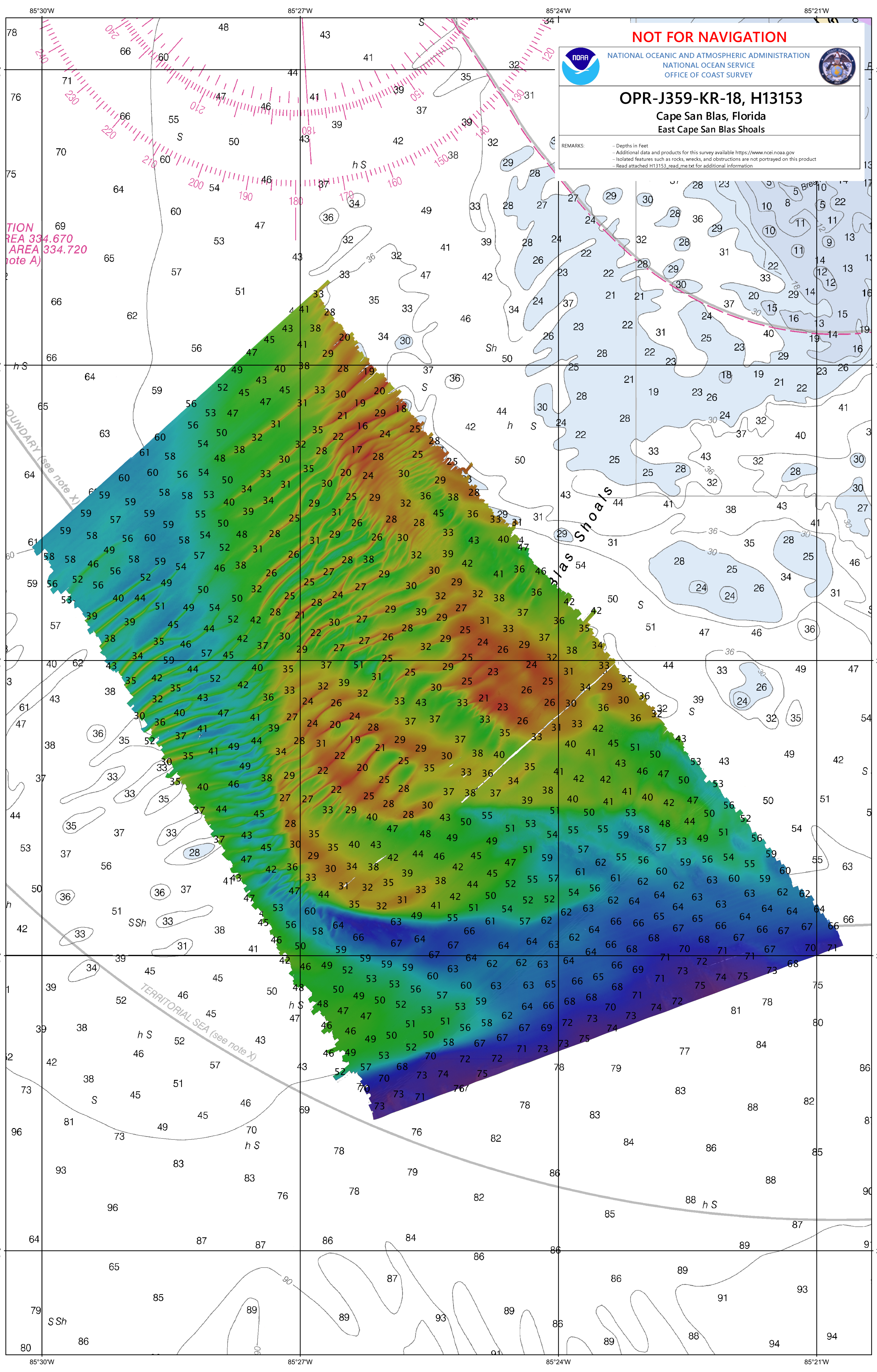
**NOT FOR NAVIGATION**

NATIONAL OCEANIC AND ATMOSPHERIC ADMINISTRATION  
 NATIONAL OCEAN SERVICE  
 OFFICE OF COAST SURVEY

**OPR-J359-KR-18, H13153**

**Cape San Blas, Florida**  
**East Cape San Blas Shoals**

REMARKS:  
 - Depths in Feet  
 - Additional data and products for this survey available <https://www.ncei.noaa.gov>  
 - Isolated features such as rocks, wrecks, and obstructions are not portrayed on this product  
 - Read attached H13153\_read\_me.txt for additional information



TION  
 AREA 334.670  
 AREA 334.720  
 (note A)

BOUNDARY (see note X)

TERRITORIAL SEA (see note X)

Shoals