

82°45'W

82°42'W

82°39'W

NATURAL RESOURCES BOUNDARY (see note X)

**NOT FOR NAVIGATION**



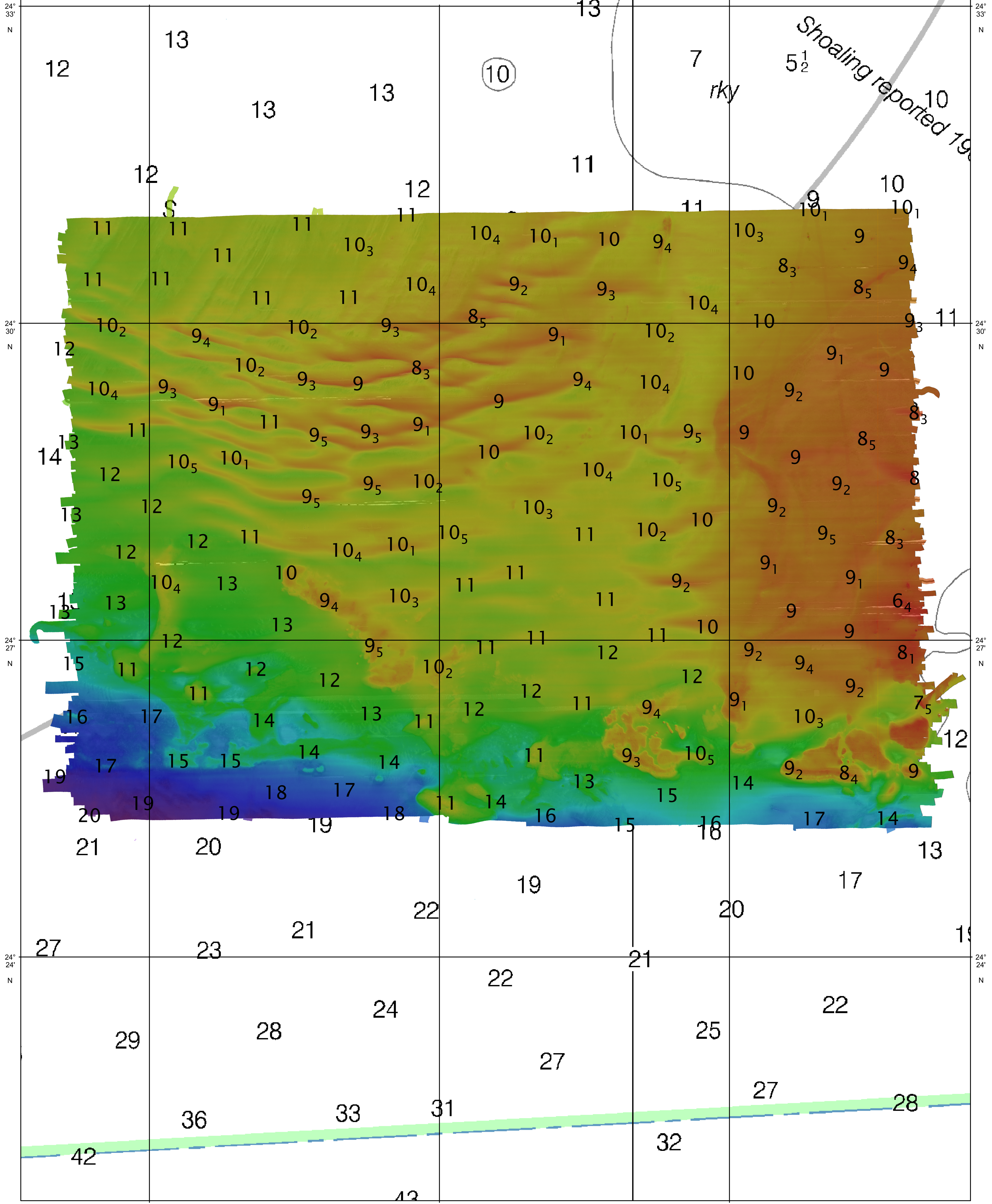
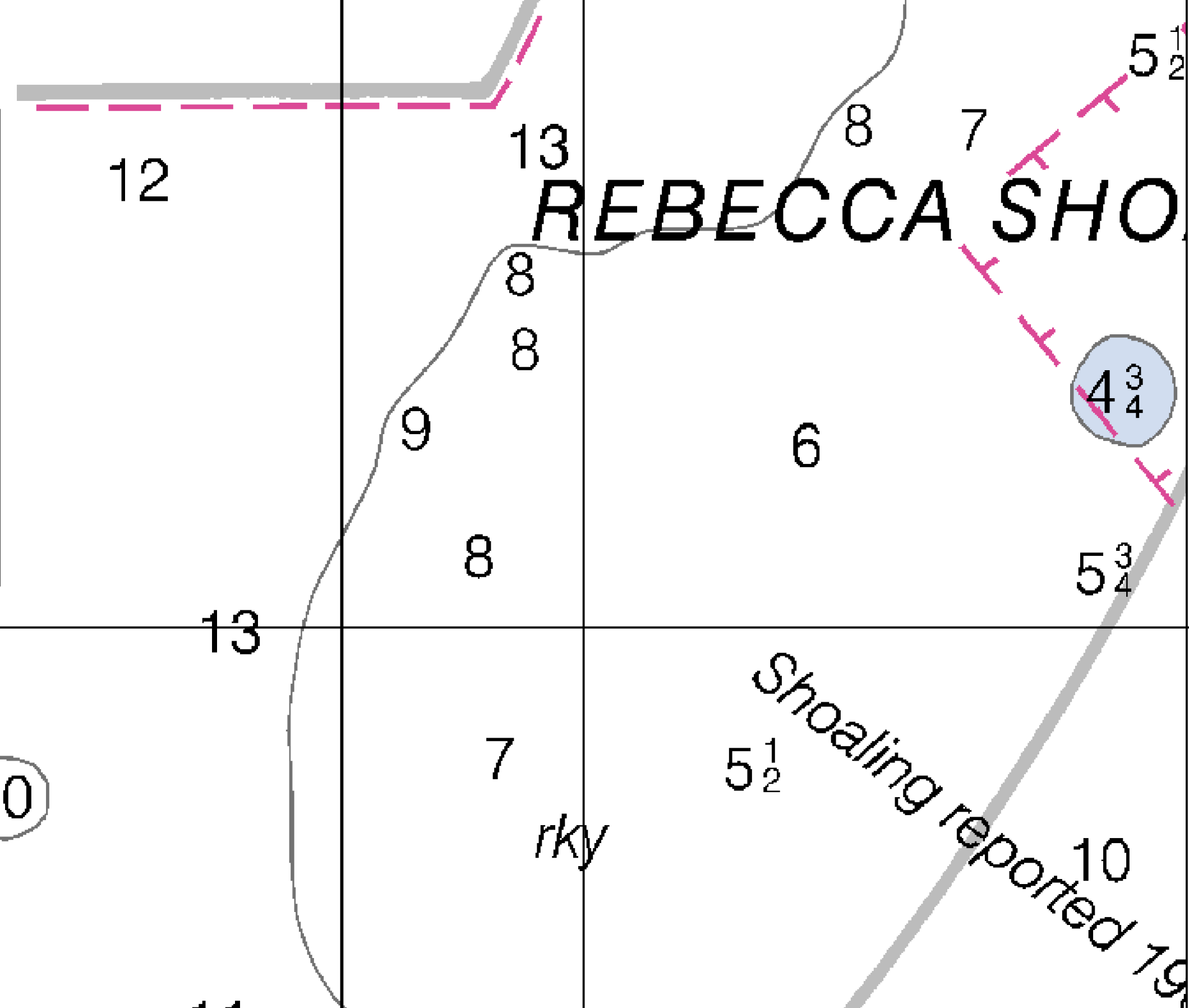
NATIONAL OCEANIC AND ATMOSPHERIC ADMINISTRATION  
NATIONAL OCEAN SERVICE  
OFFICE OF COAST SURVEY



**OPR-H355-KR-18, H13161**

Florida Keys National Marine Sanctuary and Vicinity, Florida  
11 Nautical Miles East of Dry Tortugas

REMARKS:  
- Depths in Fathoms  
- Additional data and products for this survey available <https://www.ncei.noaa.gov>  
- Isolated features such as rocks, wrecks, and obstructions are not portrayed on this product  
- Read attached H13161\_read\_me.txt for additional information



82°45'W

82°42'W

82°39'W

24° 33' N

24° 30' N

24° 27' N

24° 24' N

24° 33' N

24° 30' N

24° 27' N

24° 24' N