

164°50'W 164°40'W 164°30'W 164°20'W 164°10'W 164°W 163°50'W 163°40'W 163°30'W 163°20'W 163°10'W 163°W

59° 50' N

59° 50' N

59° 40' N

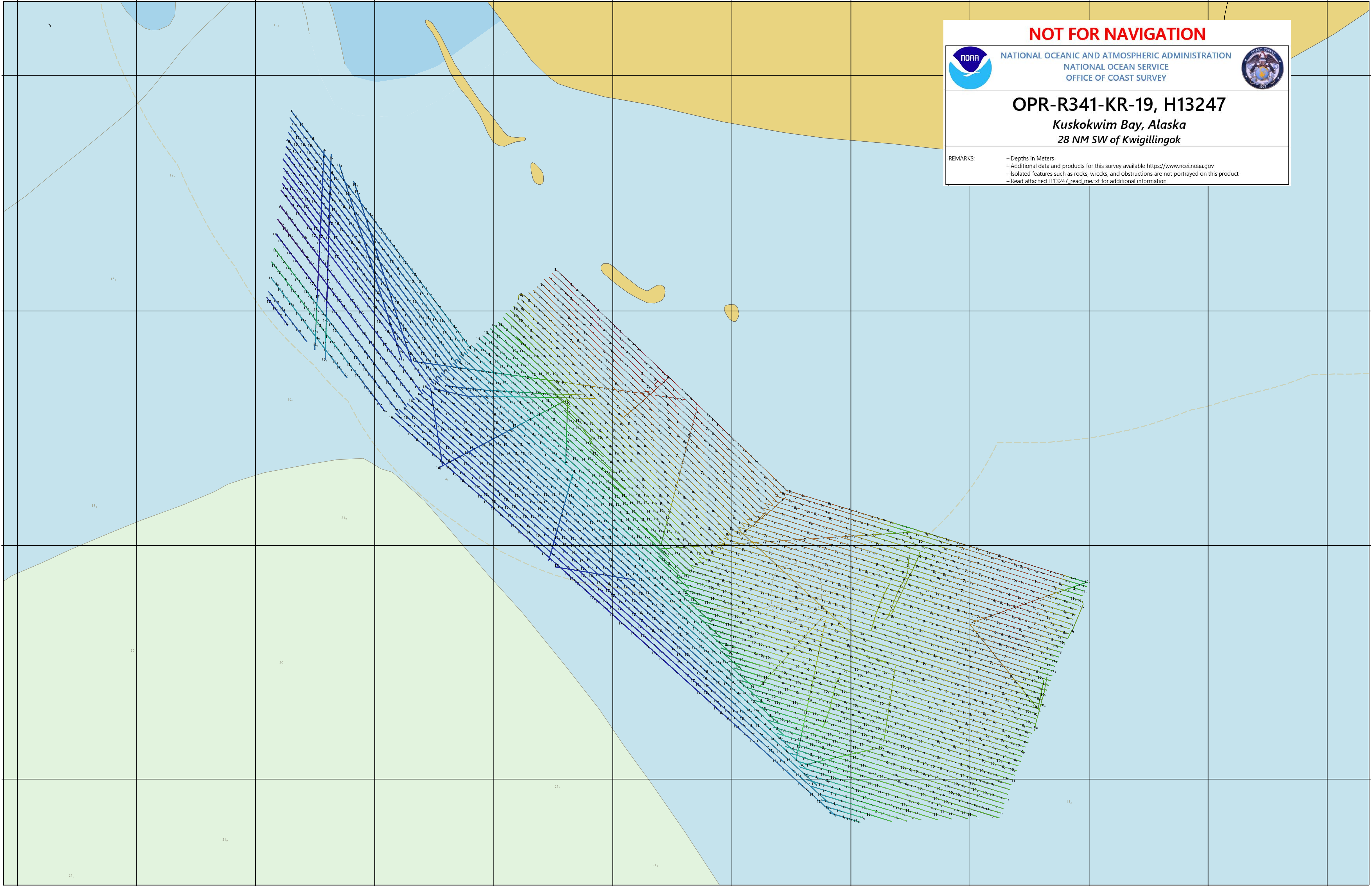
59° 40' N

59° 30' N

59° 30' N

59° 20' N

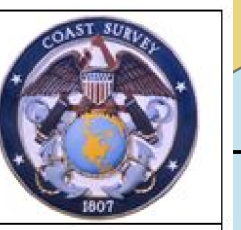
59° 20' N



NOT FOR NAVIGATION



NATIONAL OCEANIC AND ATMOSPHERIC ADMINISTRATION
NATIONAL OCEAN SERVICE
OFFICE OF COAST SURVEY



OPR-R341-KR-19, H13247

Kuskokwim Bay, Alaska
28 NM SW of Kwigillingok

REMARKS:
- Depths in Meters
- Additional data and products for this survey available <https://www.ncei.noaa.gov>
- Isolated features such as rocks, wrecks, and obstructions are not portrayed on this product
- Read attached H13247_read_me.txt for additional information

164°50'W 164°40'W 164°30'W 164°20'W 164°10'W 164°W 163°50'W 163°40'W 163°30'W 163°20'W 163°10'W 163°W