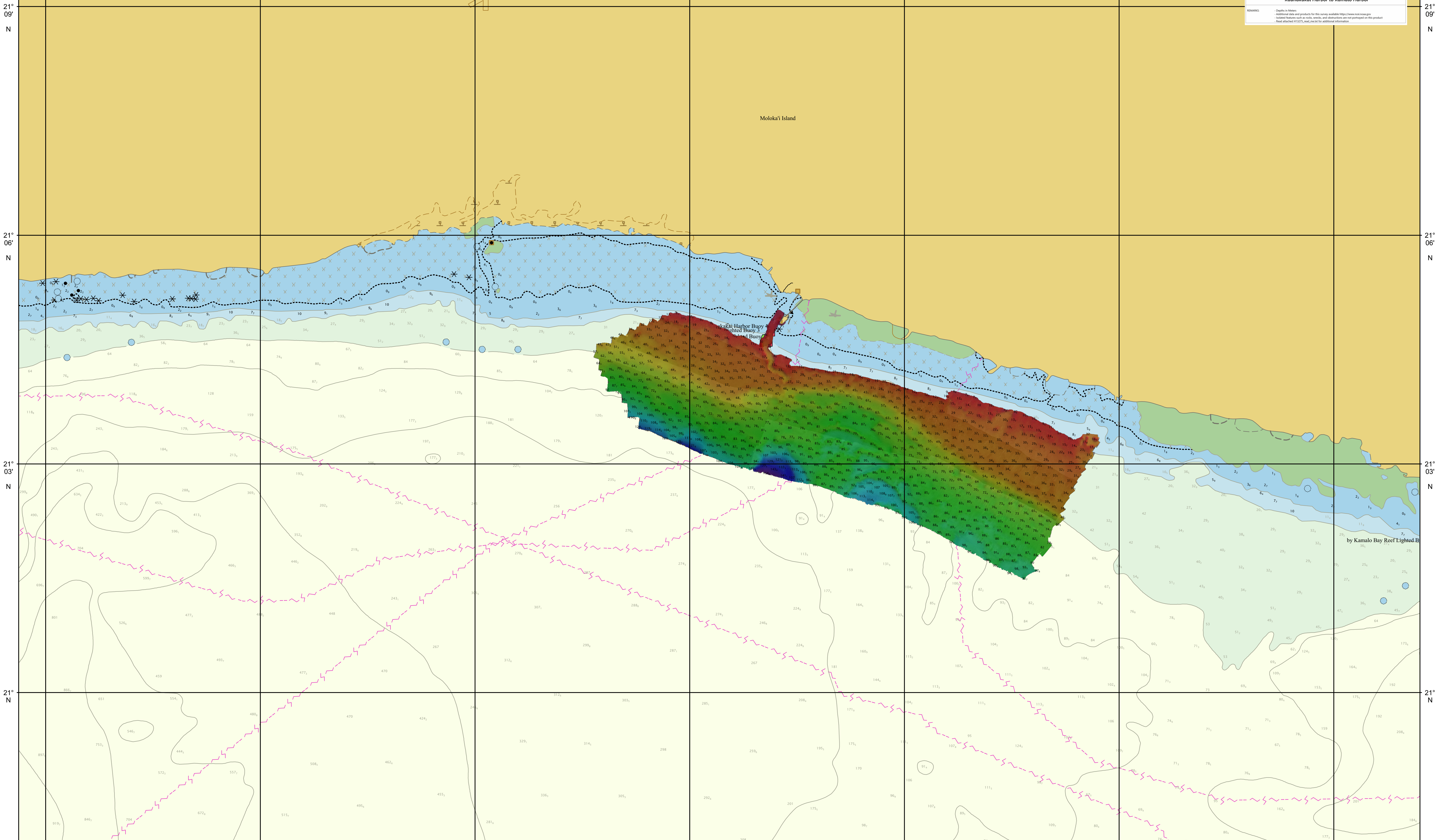


157°12'W 157°09'W 157°06'W 157°03'W 157°W 156°57'W 156°54'W

NOT FOR NAVIGATION
NATIONAL OCEANIC AND ATMOSPHERIC ADMINISTRATION
NATIONAL OCEAN SERVICE
OFFICE OF COAST SURVEY

OPR-T383-RA-19, H13275
Hawaiian Islands and Vicinity, Hawaii
Kaunakakai Harbor to Kamalo Harbor

REMARKS: - Depths in Meters
Additional data and products for this survey available <http://www.ncei.noaa.gov>
Isolated features such as rocks, wrecks, and obstructions are not part of the product
Read attached H13275.html file for additional information



157°12'W 157°09'W 157°06'W 157°03'W 157°W 156°57'W 156°54'W