


84°42'W 84°39'W 84°36'W 84°33'W 84°30'W

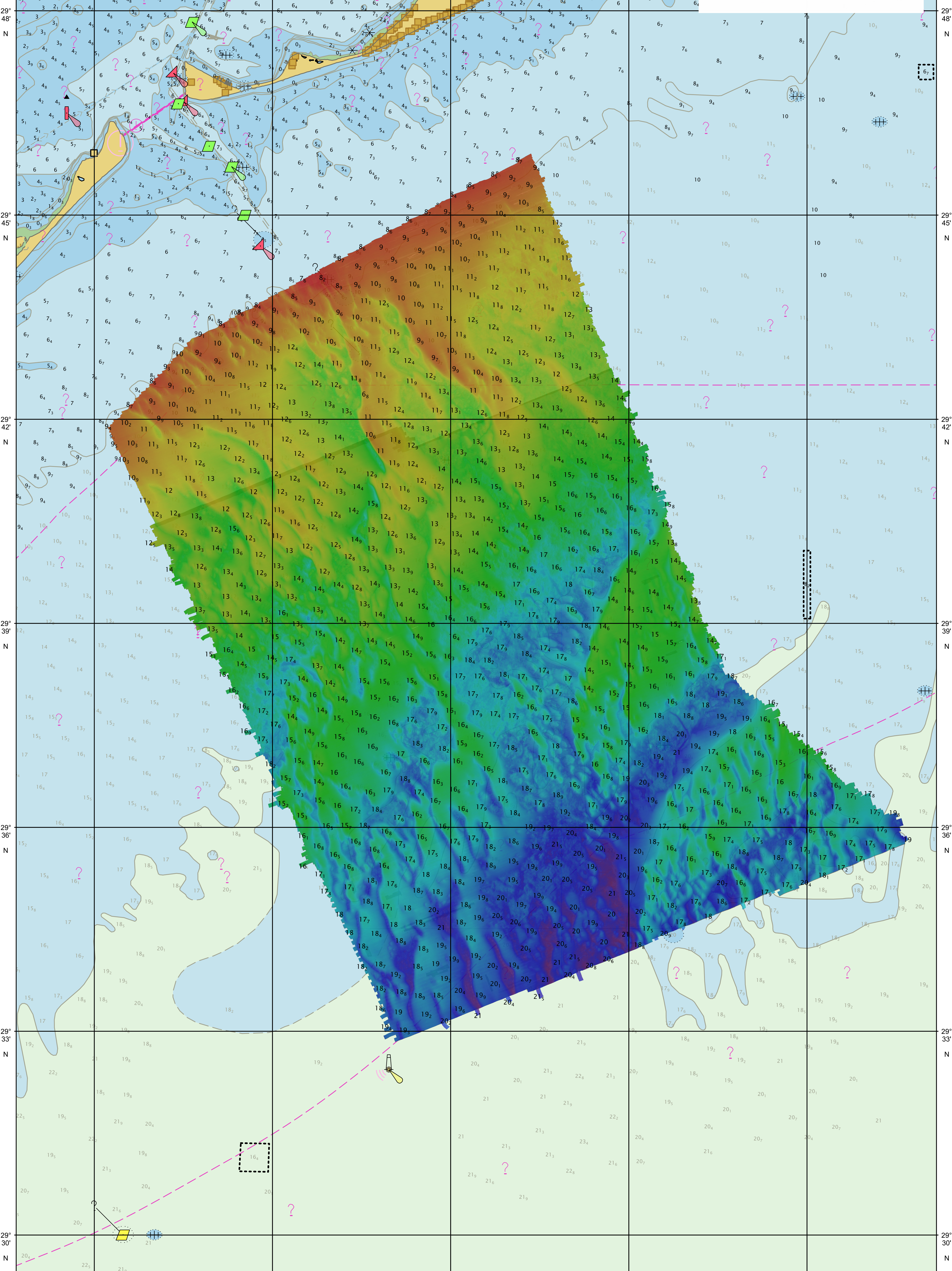
**NOT FOR NAVIGATION**



NATIONAL OCEANIC AND ATMOSPHERIC ADMINISTRATION  
NATIONAL OCEAN SERVICE  
OFFICE OF COAST SURVEY

**OPR-J359-KR-20, H13291**  
*Northwest Gulf of Mexico, Florida*  
Approaches to East Pass

REMARKS:  
• Depths in Meters  
• Additional data and products for this survey available <https://www.noaa.gov>  
• Isolated features such as rocks, wrecks, and obstructions are not portrayed on this product  
• Read attached H13291\_noaa\_me.txt for additional information



84°42'W 84°39'W 84°36'W 84°33'W 84°30'W