

76°9'0"W

76°6'0"W

76°3'0"W

76°0'0"W

37°18'0"N

37°18'0"N

37°15'0"N

37°15'0"N

37°12'0"N

37°12'0"N

37°9'0"N

37°9'0"N

37°6'0"N

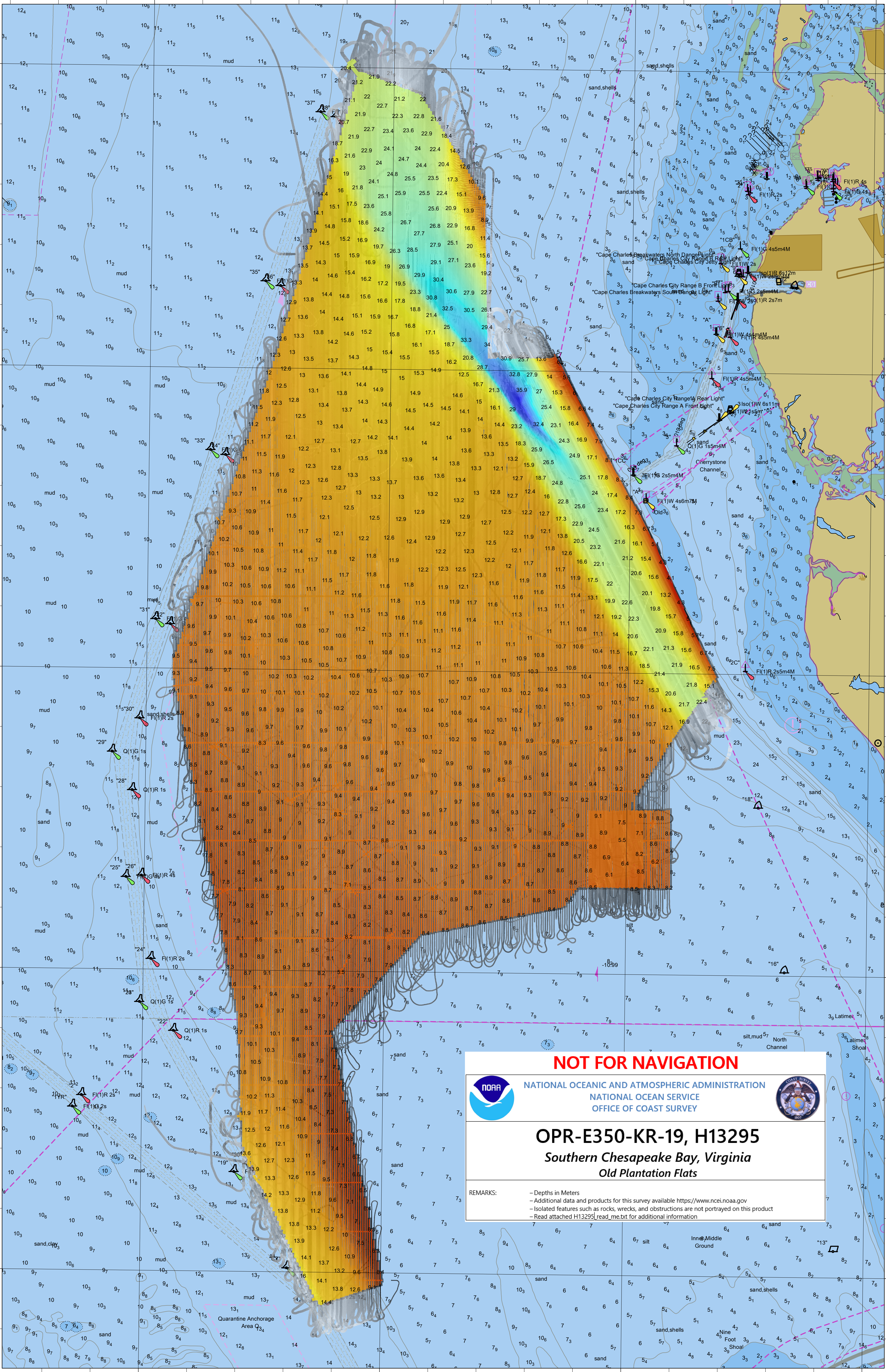
37°6'0"N

76°9'0"W


76°6'0"W

76°3'0"W


76°0'0"W



NOT FOR NAVIGATION



NATIONAL OCEANIC AND ATMOSPHERIC ADMINISTRATION
NATIONAL OCEAN SERVICE
OFFICE OF COAST SURVEY



OPR-E350-KR-19, H13295
Southern Chesapeake Bay, Virginia
Old Plantation Flats

REMARKS:

- Depths in Meters
- Additional data and products for this survey available <https://www.ncei.noaa.gov>
- Isolated features such as rocks, wrecks, and obstructions are not portrayed on this product
- Read attached H13295_read_me.txt for additional information