

162°20'W

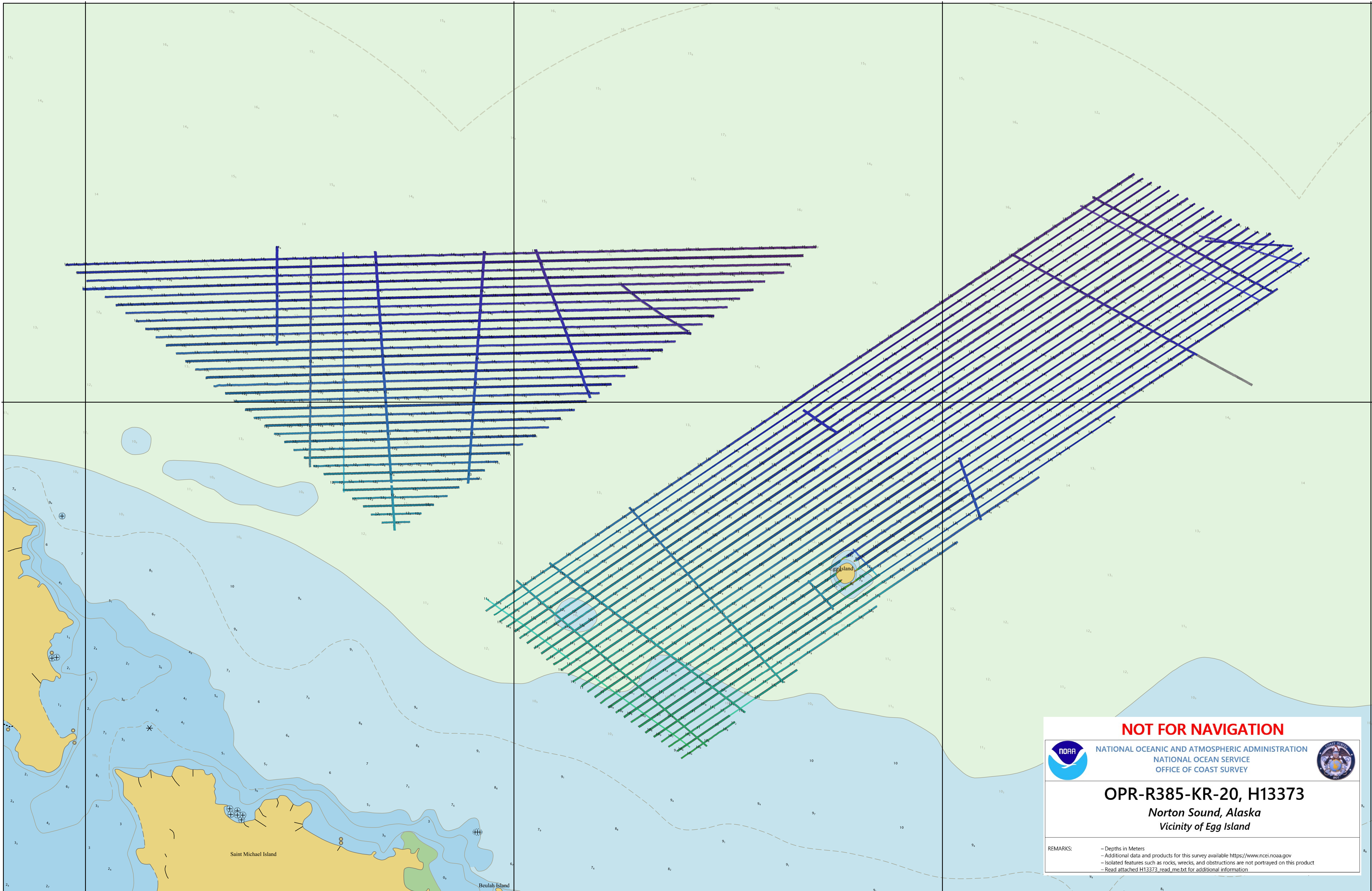
162°W

161°40'W

161°20'W

63°
40'
N

63°
40'
N



162°20'W

162°W

161°40'W

161°20'W

NOT FOR NAVIGATION



NATIONAL OCEANIC AND ATMOSPHERIC ADMINISTRATION
NATIONAL OCEAN SERVICE
OFFICE OF COAST SURVEY



OPR-R385-KR-20, H13373

*Norton Sound, Alaska
Vicinity of Egg Island*

REMARKS:

- Depths in Meters
- Additional data and products for this survey available <https://www.ncei.noaa.gov>
- Isolated features such as rocks, wrecks, and obstructions are not portrayed on this product
- Read attached H13373_read_me.txt for additional information