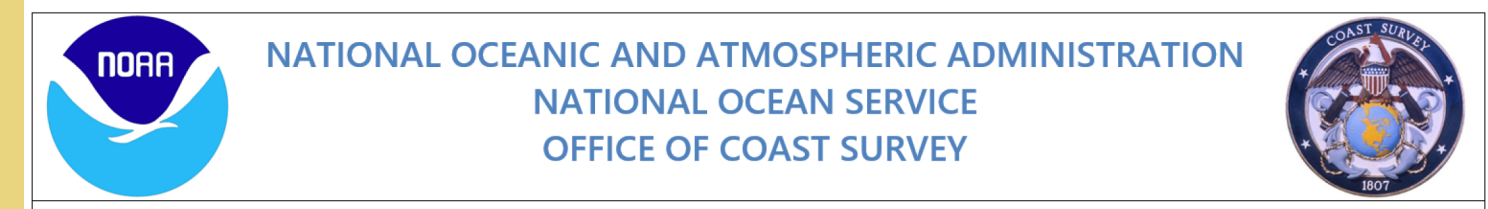


73°42'W 73°39'W 73°36'W 73°33'W 73°30'W 73°27'W 73°24'W

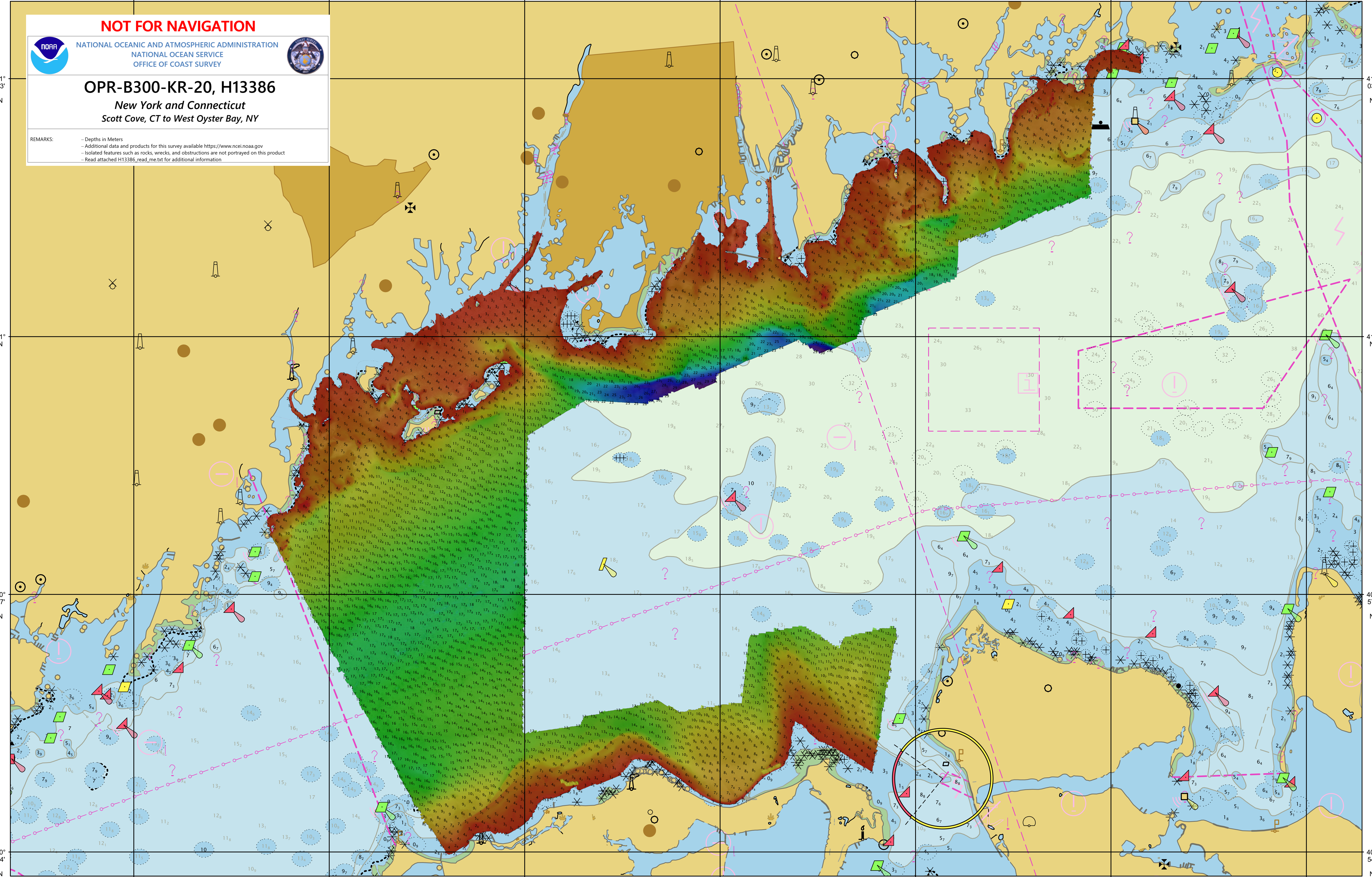
NOT FOR NAVIGATION



OPR-B300-KR-20, H13386
New York and Connecticut
Scott Cove, CT to West Oyster Bay, NY

REMARKS:
- Depths in Meters
- Additional data and products for this survey available <https://www.ncei.noaa.gov>
- Isolated features such as rocks, wrecks, and obstructions are not portrayed on this product
- Read attached H13386_read_me.txt for additional information

41° 03' N
41° N
40° 57' N
40° 54' N



73°42'W 73°39'W 73°36'W 73°33'W 73°30'W 73°27'W 73°24'W