

B.2.6 Factors Affecting Soundings

Vertical Control

Three lines running through a narrow channel along the west side of Ruth Island exhibited issues with vertical control. The exact source of the error was not determined however it appears to be related to the SBET from that day. Due to the navigation insignificance of the area the issue was not investigated and further and a solution was not found.

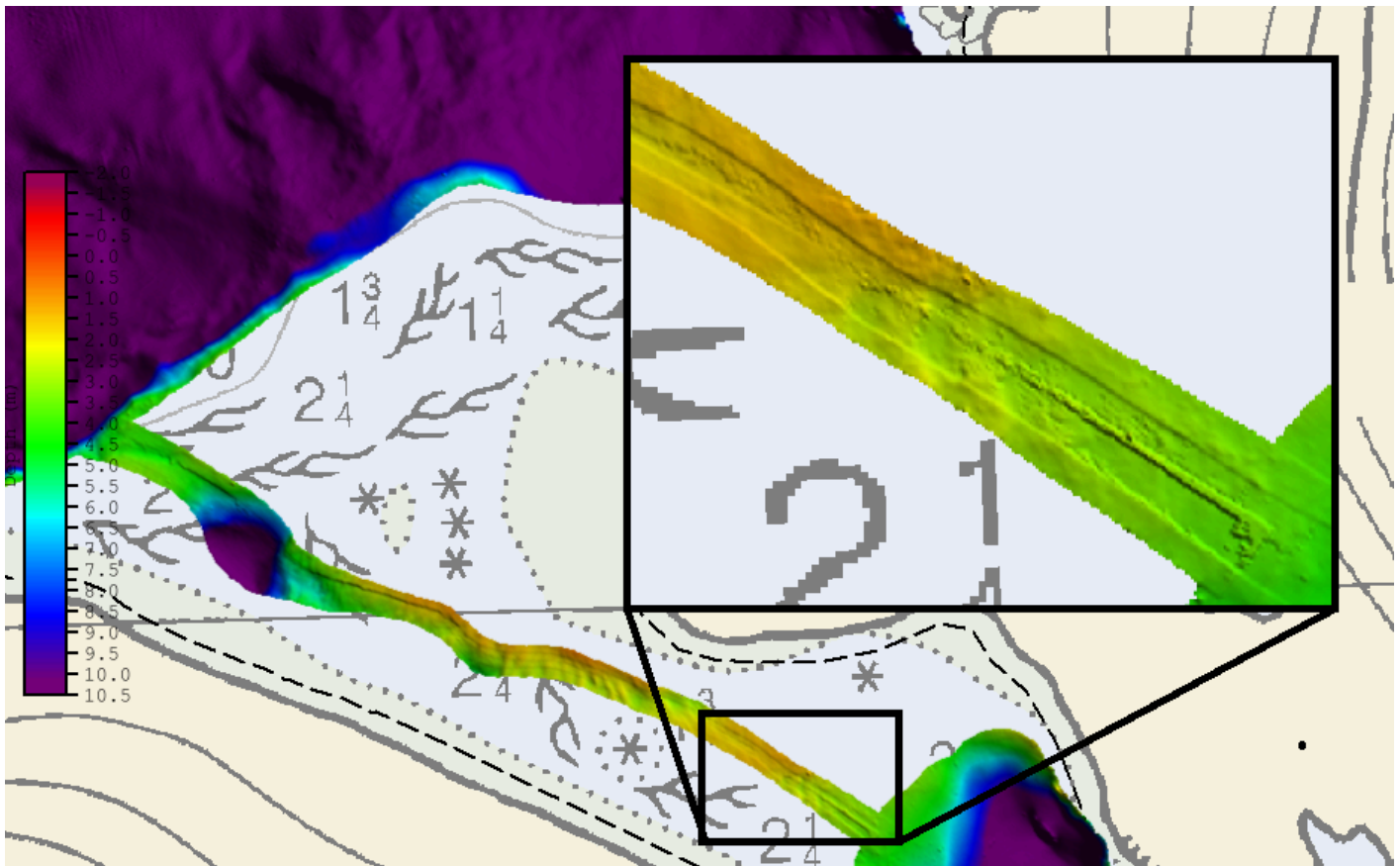


Figure 12: Overview of narrow channel exhibiting vertical control issues. Note surface is shown at five times vertical exaggeration.