

**NOT FOR NAVIGATION**



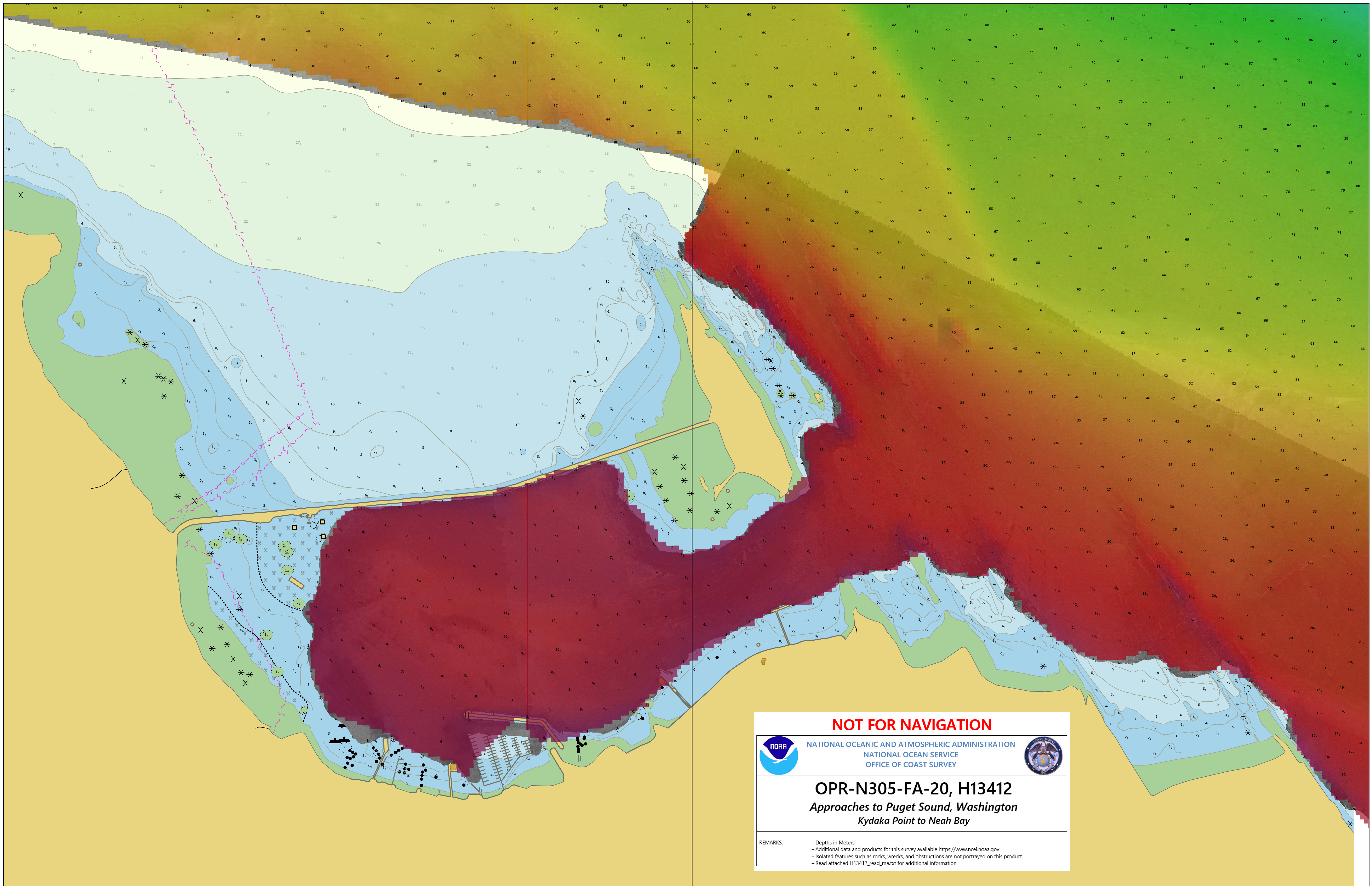
NATIONAL OCEANIC AND ATMOSPHERIC ADMINISTRATION  
NATIONAL OCEAN SERVICE  
OFFICE OF COAST SURVEY




**OPR-N305-FA-20, H13412**  
*Approaches to Puget Sound, Washington*  
*Kydaka Point to Neah Bay*


REMARKS: - Depths in Meters  
- Additional data and products for this survey available <https://www.ncei.noaa.gov>  
- Isolated features such as rocks, wrecks, and obstructions are not portrayed on this product  
- Read attached H13412\_read\_me.txt for additional information

124°36'W



**NOT FOR NAVIGATION**


 NATIONAL OCEANIC AND ATMOSPHERIC ADMINISTRATION  
 NATIONAL OCEAN SERVICE  
 OFFICE OF COAST SURVEY



**OPR-N305-FA-20, H13412**

*Approaches to Puget Sound, Washington  
Kydaka Point to Neah Bay*

REMARKS:
 

- Depths in Meters
- Additional data and products for this survey available <https://www.ncei.noaa.gov>
- Isolated features such as rocks, wrecks, and obstructions are not portrayed on this product
- Read attached H13412\_read\_me.txt for additional information

124°36'W